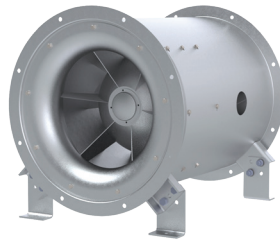




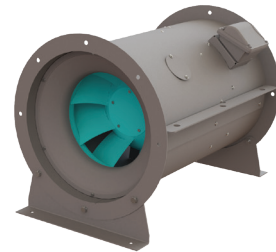
S&P USA VENTILATION SYSTEMS RETIRES SMXD FAN

Please be aware that our SMXD direct drive mixed-flow fan has been retired. It has been replaced by the SMXDK. Below is a chart showcasing the differences between the two models.

SMXD



SMXDK



SIZE RANGE	15–24	09–30
MAX HP RANGE	1 1/2–15	1/4–20
CFM RANGE	1300–17800	350–23480
MAX SP RANGE	2"–5 1/2"	1"–6 1/2"
AVG. SHIP WEIGHT (LBS)	210–954	120–1165

For additional questions, please call our customer service team at 1-904-731-4711.

ENABLING THE WORLD TO BREATHE BETTER AIR

6393 POWERS AVE, JACKSONVILLE, FLORIDA 32217 | SOLERPALAU-USA.COM



Please be aware that our SMXD direct drive mixed-flow fan has been retired. It has been replaced by the SMXDK. Below is a chart showcasing the differences between the two models.

###

About S&P USA Ventilation Systems LLC

S&P USA Ventilation Systems (S&P USA), based in Jacksonville, Florida, is part of Soler & Palau Ventilation Group (S&P), the world's leading fan manufacturer for more than 70 years. Currently, Soler & Palau Ventilation Group's R&D, manufacturing and distribution facilities occupy more than 1.1 million square feet, with offices and locations around the globe. S&P products can be found in virtually any commercial or residential application. S&P USA focuses on North American sales and distribution of ventilation products ranging from innovative, quiet, and reliable residential fans to large, high-capacity exhaust systems for commercial facilities and critical applications in some of the world's toughest environments. Our vast product line and partner-first philosophy support our mission of enabling people and buildings to breathe better, cleaner air. For more information visit www.solerpalau-usa.com or call 1-800-961-7370.

ENABLING THE WORLD TO BREATHE BETTER AIR

6393 POWERS AVE, JACKSONVILLE, FLORIDA 32217 | SOLERPALAU-USA.COM