
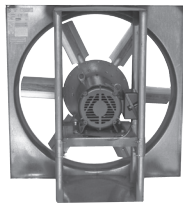


COMMERCIAL VENTILATION SYSTEMS THAT ENABLE THE WORLD TO BREATHE BETTER AIR

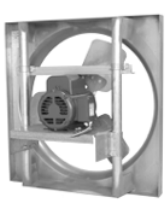
PROPELLER SIDEWALL SYSTEMS




**ACF**  
Downblast Direct Drive Exhaust Fan  
Size 48 | 20,300 CFM




**DDE/DDS**  
High Pressure Direct Drive Exhaust/Supply Fan  
Size 24-60 | 3,500-55,800 CFM



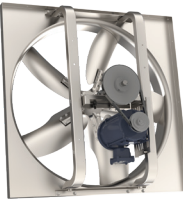
**DFE/DFS**  
Medium Pressure Direct Drive Exhaust/Supply Fan  
Size 10-30 | 37-12,415 CFM




**GED/GSD**  
Low Pressure Direct Drive Exhaust/Supply Fan  
Size 10-20 | 227-3,885 CFM



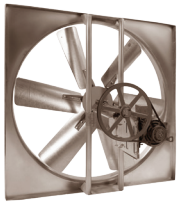
**eGED/eGSD** ⚡  
Low Pressure Direct Drive Exhaust/Supply Fan with EC Motor  
Size 12-20 | 489-3,718 CFM



**LCE/LCS**  
Low Pressure Direct Drive Exhaust/Supply Belt Drive Model  
Size 20-60 | 2,783-40,855 CFM



**L2E/L2S**  
Medium Pressure Direct Drive Exhaust/Supply Belt Drive Model  
Size 24-60 | 2,733-47,161 CFM



**L3E/L3S**  
High Pressure Direct Drive Exhaust/Supply Belt Drive Model  
Size 42-72 | 21,683-85,089 CFM

PROPELLER ROOF VENTILATORS



**ARE/ARS**  
Dome Axial Power Roof Exhaust/Supply Fan with Direct Drive  
Size 100A-201A | 167-2,827 CFM



**HREB-C/HREB-P**  
Hooded Exhaust Fan with Belt Drive  
Size 24-72 | 1,159-93,240 CFM



**HRED-C**  
Hooded Exhaust Fan with Direct Drive  
Size 24-60 | 1,193-48,780 CFM



**HRSB**  
Hooded Supply Fan with Belt Drive  
Size 24-60 | 2,979-52,534 CFM



**HRSD**  
Hooded Supply Fan with Direct Drive  
Size 24-54 | 2,509-50,109 CFM



**TUB/TUB-HT/TUB-P**  
Tubeaxial Upblast Exhaust Fan with Remote Drive  
Sizes 24-60 | 4,321-60,116 CFM



**UBB**  
Upblast Exhaust Fan with Belt Drive  
Size 24-72 | 3,254-70,800 CFM



**UBS/UBS-P**  
Upblast Exhaust Fan with Belt Drive  
Size 24-60 | 3,732-58,500 CFM



**UBSRD/UBSRD-HT/UBSRD-HTI/UBSRD-P**  
Upblast Exhaust Fan for Heat and Smoke Removal with Remote Drive  
Size 24-60 | 4,977-50,459 CFM



**UBX**  
Upblast Exhaust Fan with Direct Drive  
Size 24-72 | 5,200-65,500 CFM

CENTRIFUGAL ROOF AND SIDEWALL MODEL



**CWD**  
Direct Drive Centrifugal Sidewall Exhaust Fan  
Size 7-16 | 66-3,360 CFM



**LPD**  
Low Profile Direct Drive Exhaust  
Size 6-8 | 43-423 CFM



**SDB**  
Downblast Exhaust Fan  
Size 6-48 | 41-31,563 CFM



**SDBD** ⚡  
Downblast Direct Drive Exhaust Fan  
Size 6-16 | 53-4,984 CFM



**SDBDe** ⚡ ⚡  
Downblast Direct Drive Exhaust Fan with EC Motor  
Size 6-18 | 53-4,733 CFM



**STXB/STXB-RHUL/STXB-HT2/STXB-HT** ⚡ ⚡  
Upblast Exhaust Fan  
Sizes 8-48 | 201-37,920 CFM



**STXD/STXD-RHUL** ⚡ ⚡ ⚡  
Upblast Direct Drive Exhaust Fan  
Size 6-16 | 56-4,781 CFM



**STXDe/STXDe-RHUL** ⚡ ⚡ ⚡ ⚡  
Upblast Direct Drive Exhaust Fan with EC Motor  
Size 6-18 | 56-4,492 CFM

GRAVITY VENTS INTAKE/RELIEF



**BGH**  
Fabricated Gravity Relief/Intake Ventilator  
Size 12 x 12-72 x144  
536-90,000 CFM

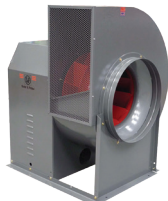


**RCXII/RCXII-SF**  
Gravity Relief/Intake Ventilators  
Size 6-36 | 90-10,378 CFM



**RLX**  
Louvered Penthouse  
Size 12 x 12-84 x144  
536-69,500 CFM

UTILITY EXHAUST/SUPPLY FAN



**CM/CM-RHUL/CM-HT**  
Belt Drive Utility Vent Set  
Sizes 10-36 | 499-23,958 CFM

JET FAN SERIES



**IFAB/IFEB** ⚡  
Low Profile Centrifugal Jet Fans  
Size 12N | 1,350-1,530 CFM



**IFFT/IFFTe** ⚡  
Centrifugal Jet Fan  
Size 50N-100N | 1,754-5,498 CFM



**TJFU**  
Medium Pressure Direct Drive Exhaust/Supply Fan  
Size 315-400 | 1,560-6,474 CFM

BELT DRIVE ROOF SUPPLY FAN



**CSF**  
Centrifugal Filtered Roof Supply Fan  
Size 9-20 | 475-12,520 CFM



**KSFV**  
Kitchen Supply Fan  
Size 9-20 | 475-12,600 CFM



**LSF**  
Centrifugal Filtered Roof Supply Fan  
Size 9-20 | 475-12,520 CFM

CENTRIFUGAL INLINE MODEL



**CFD**  
Forward Curved Belt Drive Inline Duct Blower  
Size 7-15 | 200-5,800 CFM



**CTB/CTB-RHUL** ⚡ ⚡  
Belt Drive Inline Tubular  
Size 9-42 | 300-20,300 CFM



**SMXDK/SMXDK-HT** ⚡  
Direct Drive Mixed Flow Fan  
Size 9-30 | 350-24,500 CFM

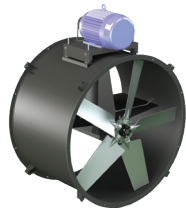


**SQB**  
Belt Drive Square Inline Fan  
Size 7-42 | 86-24,544 CFM



**SQD/eSQD** ⚡  
Direct Drive Square Inline Fan  
Size 6-15 | 83-3,720 CFM

## INLINE TUBEAXIAL FANS



**TDB**  
Belt Drive Inline Tubeaxial  
Size 12–60 | 914–75,490 CFM



**TDD**  
Direct Drive Inline Tubeaxial  
Size 12–48 | 816–39,194 CFM

## HIGH VOLUME LOW SPEED FANS



**TEMPEST** ⚡  
6-Blade HVLS  
Size 8–16

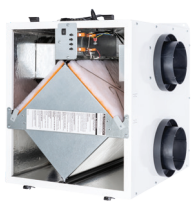


**TORNADO** ⚡  
5-Blade HVLS  
Size 10–24

## ENERGY RECOVERY VENTILATORS (ERVS)



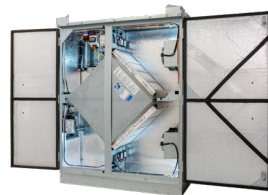
**TR**  
Total Recovery Series for Residential and Light Commercial Use  
Size 90–200 | 40–206 CFM



**TRe** ⚡  
Total Recovery Premium Series with EC Motors for Residential and Light Commercial Use  
Size 90–300 | 35–288 CFM



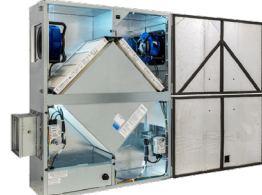
**TRLPe** ⚡  
Total Recovery Low Profile Model with EC Motors for Residential and Light Commercial Use  
Size 110 | 34–138 CFM



**TRC-RT**  
Commercial ERV Series for Outdoor/Rooftop Installation  
Size 500–1600 | 166–1853 CFM

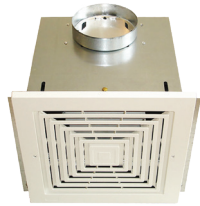


**BACNET FAN CONTROL**  
BTL-listed Accessory Connecting ERVs with BMS



**TRC/TRCe/TRCeN** ⚡  
Commercial ERV Model for Indoor Installation  
Size 500–1200 | 133–1163 CFM

## RESIDENTIAL VENTILATION SYSTEMS



**LOSONE SELECT SERIES**  
Ceiling and Cabinet Ventilators  
Size 100–700 | 44–701 CFM



**MD, MDX-ES24VK KITS**  
Motorized Dampers  
Size 4"–14" | Kits: 4"–8"



**PCD** ⚡  
Premium Choice DC Motor Series  
Size 80–110 | 80–140 CFM



**PCLPD100XHP**  
Premium Choice DC Motor Low Profile with Humidity Sensor  
Size 100 | 30–100 CFM



**PCLPXP**  
Premium Choice Low Profile XP Series  
Size 80–100 | 80–100 CFM



**PCV**  
Premium Choice Value Series  
Size 50–80 | 50–80 CFM



**PCXP**  
Premium Choice AC Motor Series  
Size 50–150 | 50–150 CFM



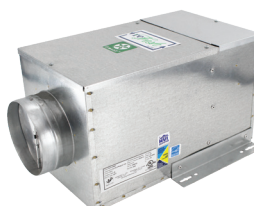
**PRF**  
Radon Mitigation Fan  
Size 100 | 150 CFM



**PV-DEDPV**  
Dryer Exhaust Duct Power Ventilator  
UL 705 Listed for Gas, Electric Dryers  
130 CFM



**PV-POWER VENT**  
Inline Centrifugal Duct Fan  
Size 100X–315X | 153–943 CFM



**reFresh** ⚡  
Filtered Supply Fan  
Size 8–10 | 7–182 CFM



**SWF**  
Sidewall Fan  
Size 100–200 | 26–416 CFM

## THE BEST WAY TO MOVE AIR THROUGH ROUND DUCT



**TD**  
Inline Mixed Flow Duct Fan  
Size 100–400 | 101–3,127 CFM



**TD-SILENT**  
Inline Mixed Flow Duct Fan  
Size 125X–200 | 28–502 CFM

## ENSURES COMPLIANCE WITH OUTSIDE AIR CODES



**ES24V**  
EnviroSense Ventilation Control Outside Air Controller



# RESIDENTIAL AND COMMERCIAL PRODUCT LINE OVERVIEW



FIND SPECIFICATIONS, SUBMITTALS AND MORE AT [SOLERPALAU-USA.COM/PRODUCTS.HTML](https://www.solerpalau-usa.com/products.html)

**S&P USA VENTILATION SYSTEMS, LLC**  
6393 Powers Avenue; Jacksonville, FL 32217  
[SolerPalau-USA.com](https://www.solerpalau-usa.com) | 800.961.737

**SolerPalau** Ventilation Group  
07142025

**S&P CANADA VENTILATION PRODUCTS, INC.**  
6710 Maritz Drive, Unit 7; Mississauga, ON L5W 0A1  
[SolerPalauCanada.com](https://www.solerpalaucanada.com) | 416.744.1217