



North American Commercial and Residential

PRODUCT LINE OVERVIEW

1PH + 3PH | 50/60HZ

Advancing Ventilation®



Enabling people and buildings to **breathe better, cleaner air**



S&P USA has been the North American Division of Soler & Palau Ventilation Group, the world's largest air movement manufacturer, since 2004. We respect our humble beginnings as a small fan manufacturer while embracing the latest technological advances and practices in ventilation.

We are here to solve any ventilation problem you may have. Our Application guides make it easy to figure out what fans to use on your next project. Looking to meet the ever-changing ventilation code? We have solutions for that too!

We are committed to providing quality products through excellence in design, manufacturing, and customer support with a focus on the development of our employees and customers alike. Our best-in-class team comes from a diverse background ready to serve you.

RESIDENTIAL



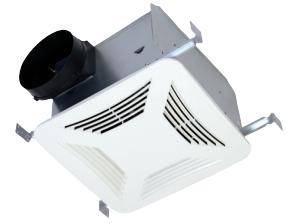
FF/FFC

Ceiling and Cabinet Ventilators
Size 50 to 3500 | 50 to 2000 CFM
[IN STOCK AVAILABILITY](#)



MD and MDX-ES24VK kits

Motorized Dampers
Size 4" to 14" | Kits : 4" to 8"



PCXP

Premium CHOICE
AC Motor Series
Size 80 to 150 | 80 to 150 CFM
[IN STOCK AVAILABILITY](#)



PCRL

Premium CHOICE
Recessed Light Models
Size 80 | 80 CFM
[IN STOCK AVAILABILITY](#)



PCV

Premium CHOICE Value Series
Size 50 to 80 | 50 to 80 CFM
[IN STOCK AVAILABILITY](#)



PCD

Premium CHOICE DC Motor Series
Size 80 to 150 | 80 to 150 CFM
[IN STOCK AVAILABILITY](#)



PCLP

Premium CHOICE
Low Profile Series
Size 80 to 100 | 80 to 100 CFM
[IN STOCK AVAILABILITY](#)



PCLPXP

Premium CHOICE
Low Profile XP Series
Size 80 to 100 | 80 to 100 CFM
[IN STOCK AVAILABILITY](#)



PV-DEDPV

Dryer Exhaust Duct Power Ventilator
30-150 CFM
[IN STOCK AVAILABILITY](#)



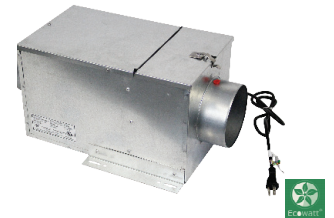
PRF

Radon Mitigation Fan
Size 80 to 100 | 80 to 100 CFM
[IN STOCK AVAILABILITY](#)



PV

Inline Centrifugal Duct Fan
Size 100 to 315 | 100 to 3,124 CFM
[IN STOCK AVAILABILITY](#)



reFresh

Filtered Supply Fan
Size 8 to 10 | 20 to 170 CFM



ECOWATT®



RHUL Option



High Wind Option



High Temperature Option



SWF

Sidewall Fan

Size 100 to 315 | 100 to 3,124 CFM

IN STOCK AVAILABILITY



TD

Inline Mixed Flow Duct Fan

Sizes 100 to 400 | 30-150 CFM

IN STOCK AVAILABILITY



TD-Silent

Inline Mixed Flow Duct Fan

Size 125X to 200 | 100 to 530 CFM

IN STOCK AVAILABILITY

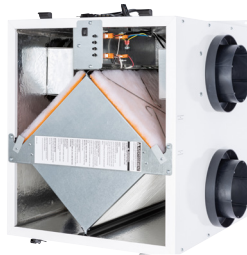
ENERGY RECOVERY VENTILATORS



TR ERV

Total Recovery

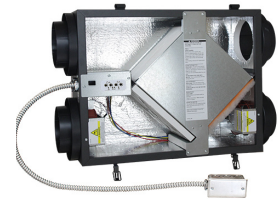
Size 90 to 300 | 40 to 310 CFM



TRe ERV

Total Recovery Premium Series

Size 200 to 300 | 30 to 280 CFM



TRLPe

Total Recovery Low Profile Series

Size 100 | 40 to 310 CFM



TRC amd TRCV

Total Recovery for Commercial Applications

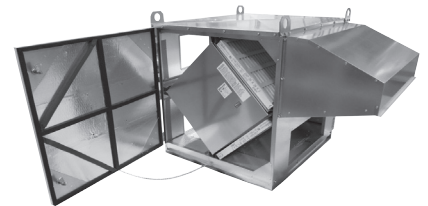
Size 50 to 1600 | 200 to 2,200 CFM



TRCe

Total Recovery for Commercial Applications with EC motor

Size 80 to 150 | 80 to 150 CFM



CRT

Outdoor Cabinet with ERV Cores

2, 3 or 4 Cores | 500 to 4000 CFM



What is ECOWATT?

S&P's Ecovatt® products are our most energy-efficient models. They use Electronically Commutated (EC) or Direct Current (DC) motors. Ecovatt® Accessories are motor control devices and systems that reduce energy consumption.



ECOWATT®



RHUL Option



High Wind Option



High Temperature Option

CENTRIFUGAL ROOF AND SIDEWALL



LPD

Low Profile Direct Drive Exhaust
Size 6 to 8 | 50 to 420 CFM
[IN STOCK AVAILABILITY](#)



CWD

Direct Drive Centrifugal Sidewall
Exhaust Fan
Size 7 to 16 | 66 to 3,360 CF
[IN STOCK AVAILABILITY](#)

DIRECT DRIVE MODELS



SDBD

Downblast Direct Drive Exhaust Fans
Size 6 to 16 | 53 to 3,298 CFM
[IN STOCK AVAILABILITY](#)



SDBDe

Downblast Direct Drive Exhaust Fans
Size 57 to 16 | 53 to 4,984 CFM
[IN STOCK AVAILABILITY](#)



STXD/STXD-RHUL

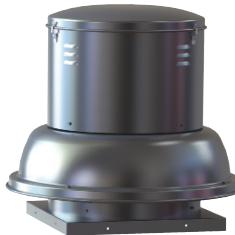
Upblast Direct Drive Exhaust Fans
Size 6 to 16 | 55 to 4,781 CFM
[IN STOCK AVAILABILITY](#)



STXDe/STXDe-RHUL

Upblast Direct Drive Exhaust Fans with EC motor
Size 6 to 16 | 53 to 3,187 CFM
[IN STOCK AVAILABILITY](#)

BELT DRIVE MODELS



SDB

Downblast Exhaust fans
Size 6 to 48 | 201 to 37,920 CFM
[IN STOCK AVAILABILITY](#)



STXB/STXB-RHUL/ STXB-HT2/ STXB-HT

Upblast Exhaust fans
Sizes 6 to 16 | 53 to 3,187 CFM
[IN STOCK AVAILABILITY](#)



ECOWATT®



RHUL Option

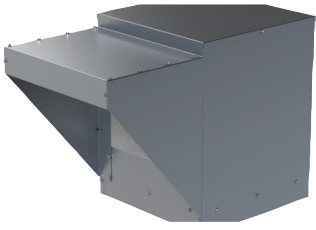


High Wind Option



High Temperature Option

BELT DRIVE ROOF SUPPLY FANS



KSFV
Kitchen Supply Fan
Size 9 to 20 | 466 to 12,600 CFM
[IN STOCK AVAILABILITY](#)



CSf and LSF
Centrifugal Filtered Roof Supply Fan
Size 100 to 315 | 440 to 12,520CFM
[IN STOCK AVAILABILITY](#)

CENTRIFUGAL INLINE BELT DRIVE MODELS



SQB
Belt Drive Square Inline Fan
Size 7 to 42 | 98 to 24,544 CFM
[IN STOCK AVAILABILITY](#)



CTB/CTB-RHUL
Inline Tubular
Size 57 to 16 | 53 to 4,984 CFM
[IN STOCK AVAILABILITY](#)



CFD
Forward Curved Belt Drive In-line
Duct Blower
Size 7 to 15 | 200 to 5,800 CFM
[IN STOCK AVAILABILITY](#)

DIRECT DRIVE MODELS



SQD/eSQD
Direct Drive Square Inline Fan
Size 6 to 16 | 53 to 3,187 CFM
[IN STOCK AVAILABILITY](#)

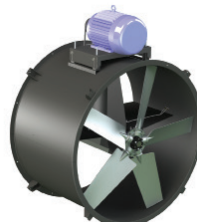


SMXD/SMXD-HT
Direct Drive Mixed Flow Fan
Size 6 to 48 | 201 to 37,920 CFM
[IN STOCK AVAILABILITY](#)

INLINE TUBEAXIAL



TDD
Direct Drive Inline Tubeaxial
Size 9 to 20 | 466 to 12,600 CFM
[IN STOCK AVAILABILITY](#)



TDB
Belt Drive Inline Tubeaxial
Size 100 to 315 | 440 to 12,520CFM
[IN STOCK AVAILABILITY](#)



ECOWATT®



RHUL Option

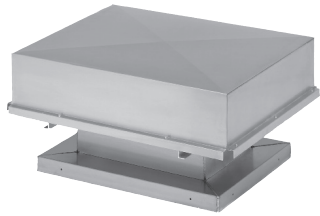


High Wind Option



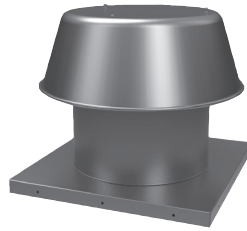
High Temperature Option

GRAVITY VENTS INTAKE/RELIEF



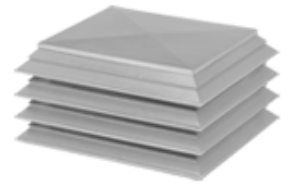
BGH

Fabricated Gravity Relief/Intake Ventilator
Size 12 X 12 to 72 X 144 | 536 to 90,000 CFM
[IN STOCK AVAILABILITY](#)



RCXII/RCXII-SF

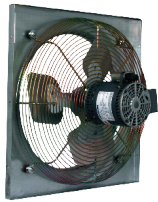
Gravity Relief/Intake Ventilators
Size 6 to 36 | 64 to 10,378 CFM
[IN STOCK AVAILABILITY](#)



RLX

Louvered Penthouse
Size 12X12 to 84 X144 | 536 to 90,000 CFM
[IN STOCK AVAILABILITY](#)

PROPELLER SIDEWALL DIRECT DRIVE MODELS



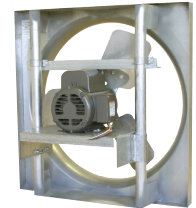
GED/GSD

Low Pressure Direct Drive
Exhaust/Supply Fans
Size 10 to 20 | 200 to 3,500 CFM
[IN STOCK AVAILABILITY](#)



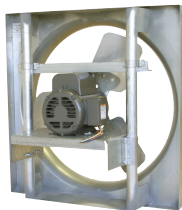
eGED/eGSD

Low Pressure Direct Drive
Exhaust/Supply Fans with
EC Motor
Size 10 to 20 | 200 to 3,500 CFM
[IN STOCK AVAILABILITY](#)



DFE/DFS

Medium Pressure Direct Drive
Exhaust/Supply Fans
Size 10 to 30 | 37 to 12,415 CFM
[IN STOCK AVAILABILITY](#)



DDE/DDS

High Pressure Direct Drive
Exhaust/Supply Fans
Size 24 to 60 | 3,500 to 55,800 CFM
[IN STOCK AVAILABILITY](#)



ACF

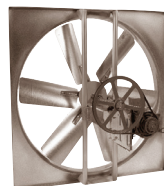
Downblast Direct Drive
Exhaust Fans
Size 48 | 20,300 CFM
[IN STOCK AVAILABILITY](#)

BELT DRIVE MODELS



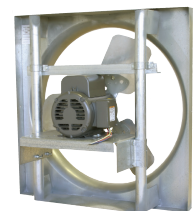
LCE/LCS

Low Pressure Direct Drive
Exhaust/Supply Fans
Size 20 to 60 | 2,829 to 40,855 CFM
[IN STOCK AVAILABILITY](#)



L2E/L2S

Medium Pressure Direct Drive
Exhaust/Supply Fans
Size 24 to 60 | 5,000 to 47,000 CFM



L3E/L3S

High Pressure Direct Drive
Exhaust/Supply Fans
Size 42 to 72 | 21,683 to 85,089 CFM



ECOWATT®



RHUL Option

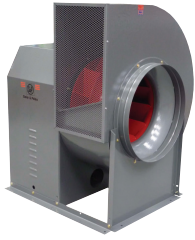


High Wind Option



High Temperature Option

UTILITY EXHAUST/SUPPLY

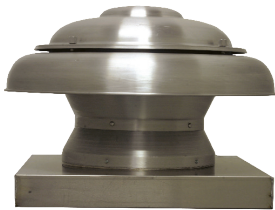


CM

Belt Drive Utility Vent Set
Sizes 10 to 36 | 499 to 23,958 CFM
[IN STOCK AVAILABILITY](#)

PROPELLER ROOF VENTILATORS

DIRECT DRIVE MODELS



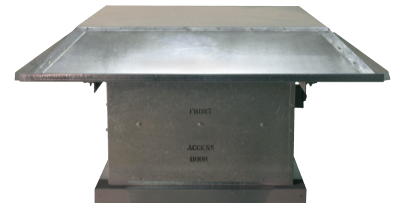
ARE/ARS

Dome Axial Power Roof
Exhaust/Supply Fans
Size 7 to 42 | 98 to 24,544 CFM
[IN STOCK AVAILABILITY](#)



HRED-C

Hooded Exhaust Fans
Size 24 to 60 | 1,193 to 48,780 CFM
[IN STOCK AVAILABILITY](#)



HRSD

Hooded Supply Fan
Size 7 to 15 | 200 to 5,800 CFM
[IN STOCK AVAILABILITY](#)



UBX

Upblast Exhaust fans
Size 24 to 72 | 5,200 to 65,500 CFM
[IN STOCK AVAILABILITY](#)

BELT DRIVE MODELS



UBS/UBS-P

Upblast Exhaust fans
Size 24 to 60 | 3,730 to 51,000 CFM
[IN STOCK AVAILABILITY](#)



HREB-C and HREB-P

Hooded Exhaust Fans
Size 24 to 60 | 1,159 to 93,240 CFM
[IN STOCK AVAILABILITY](#)



HRSB

Hooded Exhaust Fans
Size 100 to 315 | 440 to 12,520 CFM
[IN STOCK AVAILABILITY](#)



UBB

Upblast Exhaust Fans
Size 12 X 12 to 72 X 144 | 536 to 90,000 CFM
[IN STOCK AVAILABILITY](#)



ECOWATT®



RHUL Option



High Wind Option



High Temperature Option

REMOTE DRIVE MODELS



UBSRD/UBSRD-HT/UBSRD-HT1 (Exhaust)

Upblast Exhaust fan for Heat and Smoke Removal

Size 24 to 60 | 4,977 to 52,173 CFM

[IN STOCK AVAILABILITY](#)



TUB/TUB-HT/TUB-P (Exhaust)

Tubeaxial Upblast Exhaust Fan
Sizes 24 to 60 | 4,321 to 60,116 CFM

[IN STOCK AVAILABILITY](#)

JET FAN SERIES



IFFT

Centrifugal Jet Fan

Size 50N to 100N | 1,754 to 5,238 CFM

[IN STOCK AVAILABILITY](#)

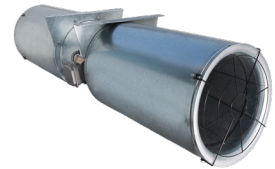


IFAB/IFEB

Low Profile Centrifugal Jet Fans

Size 12N | 200 to 3,500 CFM

[IN STOCK AVAILABILITY](#)



TJFU

Medium Pressure Direct Drive Exhaust/Supply Fans

Size 10 to 30 | 37 to 12,415 CFM

[IN STOCK AVAILABILITY](#)

HIGH VOLUME LOW SPEED



Tornado

6-Blade HVLS

Size 10 to 24



Tempest

5-Blade HVLS

Size 6 to 16



ECOWATT®



RHUL Option



High Wind Option



High Temperature Option

Competitors Cross Reference Models

Models are for general similarity only. Refer to specifications and construction data for details



ECOWATT®



RHUL Option



High Wind Option



High Temperature Option

S&P	DESCRIPTION	ACME	CARNES	COOK	GREENHECK	PENN	TWIN CITY	COOLAIR	FANTECH	CAPTIVE AIRE
SDB	Power Roof Exhauster - Centrifugal - Belt Drive	PV/PNN	VEBK	ACEB	GB	DXB/KB/JB/MB	BCRD	CR8CA	5BDD	DD-FA
LPD	Power Roof Exhauster - Centrifugal - Direct Drive	PRN	VEDK	ACED	G	DX	CRDD	CRDA	5DDD	DR-HFA
SDBD	Power Roof Exhauster - Centrifugal - Direct Drive	PRN	VEDK	ACED	G	DX	CRDD	CRDA	5DDD	DR-HFA
STXB	Upblast Roof Exhauster - Centrif. - Belt Drive	PNU/PU/PUH	VUBK	ACRUB	CUBE	FXB/FMX	BCRU	UBCA	5BDU	NCA-FA
STXB (UL-762)	Upblast Restaurant Hood Exhauster - Belt Drive	PNU-RG	VRBK	VCR	CUBE	FXBFT/FMBFT	BCRUR	CUBA	5BDU-762	NCA-HPFA
STXD	Upblast Roof Exhauster - Centrif. - Direct Drive	PDU	VUDK	ACRUD	CUE	FX/FMX	DCRU	UDCA	5DDU	DU-HFA
CWD	Sidewall Centrifugal Exhaust- Direct Drive	PW	VWVK	ACWD	GW	WX/WA/WB	TCWX	CWDA	5DDW	-
AF/FF/FFC	Bathroom Fans & Cabinet Fans	V/VQ	VCDD	GEMINI-GC/GN	SP/CSP	ZEPHYR-Z	T/TL	CF/CFL	-	CFA-CA
KSFV	Filtered Fresh Air Supply Roof Fan	AFSI	VSBB	KSPB	KSU/RSF	MU	BCFS	CSF/SIS	5FSU	A-SERIES
ARE/ARS	Dome Axial Power Roof Exhaust/Supply	LQ	LEDA	AQD	AIS	DAE	-	SASD/SAED	5ADE/5ADS	DDAR-FA
GED	Sidewall Propeller Fan - Direct Drive	FQ/FN	ITDK/LZDK	APD/SWD	SEI/SSI	P	TCPE	CDC	-	CEPRSM
LCE/LCS	Sidewall Propeller Fan - Belt Drive	DC/DCK	LWBA/LWBK	XLM/SWB	SBE/S 1&2	BL/BFM/BBK	WPMB	C-SERIES	1RHR/1RHS	-
SQB	Inline Duct Fan - Centrifugal - Belt Drive	XB	VIBK	SQN-B/SQI-B	BSQ	SXB	BST	SQBA	-	ISQB
SQD	Inline Duct Fan - Centrifugal - Direct Drive	XD	VIDK	SQN-D/SQI-D	SQ	SX	DSI	SQDA	-	-
RXII	Non-powered Roof Vent - Round Dome	LQV	GSAA	PR	GRS	DR	GRV	ARVE	-	-
CM	Belt Driven Utility Vent Set	QBR	VBRA/VFBA	CPRD/CPFB	SFD/SFB/SWD	D	BCV	-	-	-



QUICK SELECTION

Model	Mounting Location					Airflow		Application							Motor/Drives			Impeller Type		
	Roof Curb	Floor/Base	Hanging	Wall	Ceiling	Exhaust	Supply	General/Clean Air	Contaminated Air	Spark Resistant	Grease/Restaurant (UL762)	Smoke Control (UL)	High Temp above 200° F	Energy Recovery	Belt	Direct	Ecowatt (EC Motor Available)	Centrifugal	Propeller	Mixed Flow
Residential/Light Commercial																				
TD					X	X	X	X								X			X	
TD-SILENT					X	X	X	X								X			X	
PV					X	X	X	X								X		X		
reFresh					X		X	X								X	X	X		
SWF				X		X	X	X								X		X		
PC/PCLP/PCV/PCRL				X	X	X		X								X		X		
PCD					X	X		X								X		X		
FF/FFC			X		X	X		X								X		X		
PRF					X	X		X								X		X		
Recovery Ventilators (ERVs & HRVs)																				
TR			X		X	X	X	X	X				X	X		X		X		
TRC					X	X	X	X	X				X	X		X		X		
TRCe					X	X	X	X	X				X	X			X			
CRT					X	X	X	X	X				X	X						
Centrifugal Roof and Sidewall Fans																				
LPD	X					X		X		X						X		X		
SDBD/SDBDe	X			X		X		X		X						X		X		
SDB	X					X		X		X								X		
STXB	X			X		X		X		X								X		
STXB-RHUL	X					X		X		X	X							X		
STXB-HT2/STXB-HT	X					X		X		X		X	X					X		
STXD/STXDe	X					X		X		X						X	X	X		
STXD-RHUL/STXDe-RHUL	X					X		X		X	X		X			X	X	X		
CWD				X		X		X		X						X		X		
Centrifugal Filtered Supply																				
CSF/LSF	X						X	X							X			X		

* Models TR, TRC(e) and CRT (ERVs) have a 10-year core warranty and a 5-year warranty on the balance of the TR unit and a 2-year warranty on the balance of the TRC(e) and CRT.

TOOLS AND RESOURCES

S&P USA has created tools to help you understand, find or select the right product and solution for your project.



SOCIAL MEDIA

S&P USA is active on Facebook, Instagram, LinkedIn + Twitter! Get behind the scenes with our company and receive company + product announcements!



NEW CUSTOMER APPLICATION
APPLY TO BE A NEW CUSTOMER WITH S&P USA.



IMPORTANT DATES
HOLIDAY CLOSURES



OPTISIZER 2
FAN SELECTION SOFTWARE



LITERATURE
BROCHURES, SUBMITTALS AND DOCUMENTS



PRODUCT RETURNS
RMA, FREIGHT CLAIM OR WARRANTY



REVIT FILES



CODE SOLUTIONS
MEET BUILDING CODES WITH S&P USA



PRINT SHOP
ORDER PRINTED LITERATURE



S&P UNIVERSITY
ACCESS CLASSES ABOUT S&P PRODUCTS



SCAN ME
FOR S&P USA



SCAN ME
FOR S&P CANADA



S&P USA Ventilation Systems, LLC

6393 Powers Avenue
Jacksonville, FL 32217
T. 904-731-4711 • F. 904-737-8322
www.solerpalau-usa.com

S&P Canada Ventilation Products, Inc.

6710 Maritz Drive Unit #7
Mississauga, ON L5W 0A1 - Canada
T. 416-744-1217 • F. 416-744-0887
www.solerpalaucanada.com

