



Commercial, Industrial & Residential Ventilation Products

In Stock Catalog Products



Centrifugal Roof & Wall Exhausters

Centrifugal Inline Fans

Gravity Ventilators

Propeller Roof & Wall Ventilators

Full Range of Accessories



The World's Leading Producer of Air Movement Products

CENTRIFUGAL VENTILATORS



Model DB
Belt Drive
Centrifugal Exhauster
 Sizes 6 to 48
 250 to 25,000 CFM
 Static Pressure to 1-1/4"
 AMCA Seal for Air & Sound
 UL Listing Available



Model RED
Direct Drive
Centrifugal Exhauster
 Sizes 6 to 15
 150 to 3,000 CFM
 Static Pressure to 1"
 AMCA Seal for Air & Sound
 UL Listing Available



Model TXB
Belt Drive Centrifugal
Upblast Exhauster
 Sizes 8 to 48
 300 to 28,000 CFM
 Static Pressure to 3-1/4"
 AMCA Seal for Air & Sound
 Optional UL Listing
 for Restaurant Exhaust
Sidewall Mount Available



Model TXD
Direct Drive Centrifugal
Upblast Exhauster
 Sizes 6 to 15
 250 to 3,000 CFM
 Static Pressure to 1-1/4"
 AMCA Seal for Air & Sound
 Optional UL Listing
 for Restaurant Exhaust
Sidewall Mount Available



Model KSF
Belt Drive Filtered Supply
Fan Single Inlet
 Sizes 9 to 20
 375 to 10,000 CFM
 Static Pressure to 2"
 UL Listing Available
 Intake Extension Available

CENTRIFUGAL ROOF/SIDEWALL VENTILATORS



Model LPD
Ultra Low Profile
Direct Drive Centrifugal
Exhauster
 Sizes 6 to 8
 50 to 387 CFM
 Static Pressure to 1-1/2"
 AMCA Seal for Air
 UL-705 Listing Available

CENTRIFUGAL INLINE FANS

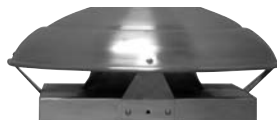


Model SQB (Sizes 7 to 42)
Model SQD (Sizes 6 to 15)
Belt/Direct Drive Square In-line
Centrifugal Fan
 150 to 21,000 CFM
 Static Pressure to 3-1/2"
 AMCA Seal for Air & Sound
 UL Listing Available



Model CWD
Direct Drive
Centrifugal Sidewall Exhauster
 Sizes 7 to 14
 150 to 2,500 CFM
 Static Pressure to 1"
 AMCA Seal for Air Performance
 UL Listing Available

GRAVITY VENTILATORS



Model RCXII
Gravity Relief/Intake
Ventilator
 Sizes 8 to 36
 160 to 10,300 CFM
 Static Pressure Rating to 3/8"

PROPELLER VENTILATORS

Additional Models Available



Models ARE & ARS
Direct Drive Axial Roof Exhaust or Supply
 Sizes 10 to 20
 260 to 3,180 CFM
 Static Pressure to 3/4"
 UL Listing Available



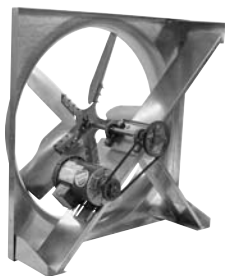
Models HRSB
Belt Drive Propeller Roof Supply
 Sizes 24 to 60
 3,000 to 47,000 CFM
 Static Pressure to 3/4"
 AMCA Seal for Air & Sound
 UL Listing Available



Models HREBC
Belt Drive Propeller Roof Exhaust
 Sizes 24 to 60
 1,150 to 44,000 CFM
 Static Pressure to 3/4"
 UL Listing Available



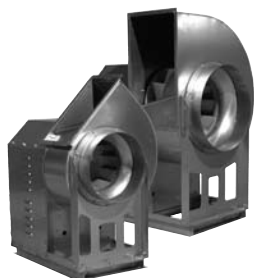
Models UBS
Belt Drive Upblast Propeller Exhauster
 Sizes 24 to 60
 5,700 to 50,000 CFM
 Static Pressure to 1/2"
 AMCA Seal for Air & Sound
 UL Listing Available



Model LC
Belt Drive Sidewall Propeller Fan
 Sizes 20 to 60
 3,500 to 40,000 CFM
 Static Pressure to 1/2"
 AMCA Seal for Air & Sound
 UL Listing Available
 High Efficiency/Low cost



Model L2
Belt Drive Sidewall Propeller Fan
 Sizes 24 to 60
 4,100 to 47,000 CFM
 Static Pressure to 3/4"
 AMCA Seal for Air & Sound
 UL Listing Available



Model BVS
Belt Driven Vent Set
 Sizes 12 to 36
 690 to 29,000 CFM
 Static Pressure to 8"
 AMCA Seal for Air & Sound
 Performance
 UL Listing Available



Model GED
Direct Drive Propeller Fan
 Sizes 10 to 20
 380 to 3,800 CFM
 Static Pressure to 1"
 UL Listing Available

ACCESSORIES

More Accessories Available



Wall Housing



Curb



Gravity Damper

Residential & Light Commercial



Model TD

In-Line Mixed Flow Duct Fans

For High Air Flow to Pressure Ratio Applications (Minimum Space)

Sizes 4 to 12

97-1050 CFM

AMCA Seal for Air/ETL Certified/HVI Certified

UL Listing & Energy Star Available



Model PV

In-Line Centrifugal Duct Fans

For High Static Pressure Applications

Sizes 4 to 12

108-942 CFM

AMCA Seal for Air/ETL Certified/HVI Certified

UL Listing & Energy Star Available



Model WA/DA

Compact Wall and Duct Axial Fans

For Industrial and Commercial Applications

Sizes 12 to 20

1216-4750 CFM

AMCA Seal for Air & Sound/UL Listing Available



Model SWF

Side Wall In-Line Centrifugal Duct Fans

For Industrial and Commercial Applications

Sizes 4 to 8

108-491 CFM



Model TH

Roof Mounted Mixed Flow Duct Fans

For High Air Flow to Pressure Ratio Applications

Sizes 6 to 12

203-824 CFM

*Available in easy to install kits



*Available in single & dual vent bathroom kits



Additional Models Available

Distributed By:

Soler & Palau USA

6393 Powers Avenue

Jacksonville, FL 32217

p. 800.961.7370

f. 800.961.7379

www.solerpalau-usa.com