

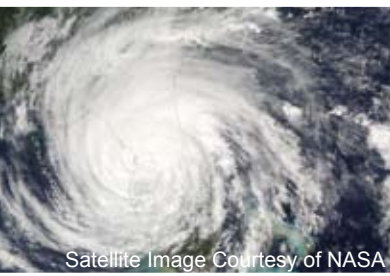


# High Wind & Hurricane Zone Fans

## Models DB, TXB, TXB-HP & TXB-RHUL



### Centrifugal Roof Downblast & Upblast Fans



**Miami-Dade County, Florida NOA 09-0513.01 (DB) and 09-0513.02 (TXB)**  
Florida Building Code TAS 201, 202 & 203-94 Certified

HWL 07.09  
July 2009

Soler&Palau  
Ventilation Group



# High Wind & Hurricane Zone Fans

To really understand the effects of High Winds and Hurricanes. . . you need to live through them!



Over the last few years we have seen a significant change in weather conditions around the world. Extreme weather conditions are now more common than ever before. The resulting potential elevated risk to human safety has therefore increased the awareness and demand for extreme weather resistant products and equipment. In the specific case of HVAC air movement equipment the greatest risk applies to any externally mounted equipment, more specifically roof mounted appliances. To minimize the risk to human safety, building damage and water ingress during extreme weather conditions it is vital that any externally mounted equipment stay affixed to the building. Products used for such applications must be trusted, and certified to withstand the rigors of extreme weather conditions.

When designing HVAC installations to withstand extreme weather conditions only products with the highest levels of quality and certified safety can be considered. Models DB, TXB, TXB-HP and TXB-RHUL fans with the **High Wind Load (HWL) Construction Option** offer simply the best engineered exhaust fan solution to withstand wind loads in excess of 150 mph.

## The solution. . .

### High Wind Load and Hurricane Zone construction certified fans from S&P:



- The only fans designed, developed, tested and manufactured in a hurricane zone!
- Designed to withstand wind loads in excess of 150mph (61psf).
- All models, without exception, have been tested and certified to ASTM Florida Building Code standards TAS 201-94, 202-94 and 203-94.
- All models are third party tested and Miami Dade County approved.
- Miami-Dade County, Florida NOA certifications:
  - 09-0513.01 – Models DB with HWL construction option expires 9-9-2014.
  - 09-0513.02 – Models TXB, TXB-HP & TXB-RHUL (Restaurant fan) with HWL construction option expires 9-9-2014.
- State licensed P.E reviewed for compliance with IBC, Florida Building Code and ASCE 7-02 Minimum Design Loads for Buildings.

MODEL	NOA#	EXHAUST	TAS 201	TAS 202	TAS 203	CLEAN AIR	GREASE LADEN AIR
DB	09-0513.01	•	✓	✓	✓	•	
TXB/TXB-HP	09-0513.02	•	✓	✓	✓	•	
TXB-RHUL	09-0513.02	•	✓	✓	✓	•	•

Florida Building Code **TAS 201-94**, Impact Test Procedures.

Florida Building Code **TAS 202-94**, Criteria for Testing Impact & Nonimpact Resistant Building Envelope Components using Uniform Static Air Pressure.

Florida Building Code **TAS 203-94**, Criteria for Testing Products Subject to Cyclic Wind Pressure Loading.

## HWL Fan Construction Option, for High Wind Load & Hurricane Zone applications.

DB, TXB, TXB-HP & TXB-RHUL fans with the **HWL Construction Option**, include the following features as standard:

- High strength internal bracing and support structure.
- High strength, thick gauge, external aluminum shroud.
- High strength external stainless steel wire tie downs.
- Certified roof curbs must be used and are available in 8, 12 and 24" heights.





## Model DB

Belt Drive Centrifugal Roof Exhausters with certified **HWL** (High Wind Load/Hurricane Zone) **Construction Option**.

The DB (belt drive) series of centrifugal downblast roof exhaust fans with the HWL construction option are suitable for use in high wind load applications which call for products with enhanced safety and structural resistance. The DB series is ideal for general roof mounted clean air exhaust applications where the air is discharged directly onto the roof surface.

### Construction

- High strength internal support and external stainless steel wire tie downs.
- High efficiency, dynamically balanced non-stalling backward inclined wheel.
- Motor and drive assembly isolated from air stream and external environment for extended life.
- 1 or 3Ph ODP, TEFC, Explosion Proof or Premium Efficiency motors available.
- **Ideally suited for coastline installations.** Includes stainless steel fasteners and non-corrosive materials.
- NEMA disconnect switches available.

### Certifications

- Miami Dade County approved. NOA# 09-0513.01.
- Licensed to bear the AMCA seal for Sound and Air.
- UL/cUL Listed Power Ventilator (UL705).

### Performance

- Air performance AMCA certified from 230 to 23,000 cfm.
- Pressures range from 0 to 1-1/4 inches WG.
- **5 Year Warranty – Simply fit and forget!**



*For full details and specification on the DB series, please refer to the S&P DB catalog.*



## Model TXB/TXB-HP

Belt Drive Centrifugal Upblast Roof Exhausters with certified **HWL** (High Wind Load/Hurricane Zone) **Construction Option**.

The TXB (belt drive) series of centrifugal upblast roof exhaust fans with the HWL construction option are suitable for use in high wind load applications which call for products with enhanced safety and structural resistance. The TXB series is ideal for general roof mounted clean air exhaust applications where the air is discharged directly up and away from the roof surface.

### Construction

- High strength internal support and external stainless steel wire tie downs
- High efficiency, dynamically balanced non-stalling backward inclined wheel.
- Motor and drive assembly isolated from air stream and external environment for extended life.
- 1 or 3Ph ODP, TEFC, Explosion Proof or Premium Efficiency motors available.
- **Ideally suited for coastline installations.** Includes stainless steel fasteners and non-corrosive materials.
- NEMA disconnect switches available.

### Certifications

- Miami Dade County approved. NOA# 09-0513.02.
- Licensed to bear the AMCA seal for Sound and Air.
- UL/cUL Listed as Power Ventilator (UL705).

### Performance

- Air performance AMCA certified from 250 to 35,000 cfm.
- Pressures range from 0 to 3-1/4 inches WG.
- **5 Year Warranty – Simply fit and forget!**



*For full details and specification on the TXB series, please refer to the S&P TXB catalog.*



## Model TXB-RHUL for Restaurant Exhaust

Belt Drive Centrifugal Upblast Roof Exhausters with certified **HWL** (High Wind Load/Hurricane Zone) **Construction Option**.

The TXB-RHUL (belt drive) series of centrifugal upblast roof exhaust fans with the HWL construction option are suitable for use in high wind load **restaurant exhaust** applications which call for products with enhanced safety and structural resistance. The TXB-RHUL series is ideal for general roof mounted grease laden air exhaust applications where the air is discharged directly up and away from the roof surface.

### Construction

- High strength internal support and external stainless steel wire tie downs
- High strength **steel curb base with welded corners.**
- **Fiberglass free insulation.**
- High efficiency, dynamically balanced non-stalling backward inclined wheel.
- Motor and drive assembly isolated from air stream and external environment for extended life.
- 1 or 3Ph ODP, TEFC, Explosion Proof or Premium Efficiency motors available.
- **Ideally suited for coastline installations.** Includes stainless steel fasteners and non-corrosive materials.
- NEMA disconnect switches available.

### Certifications

- Miami Dade County approved. NOA# 09-0513.02.
- Licensed to bear the AMCA seal for Sound and Air.
- UL/cUL Listed Power Ventilator for Restaurant Exhaust Appliances (UL762).

### Performance

- Air performance AMCA certified from 250 to 35,000 cfm.
- Pressures range from 0 to 3-1/4 inches WG.
- **5 Year Warranty – Simply fit and forget!**



*For full details and specification on the TXB-RHUL series, please refer to the S&P TXB catalog.*

**S&P manufactures a complete line of fans and gravity ventilators for all your ventilation requirements.**



**MODEL DB**  
Backward Inclined  
Belt Drive  
Centrifugal Roof Exhaust



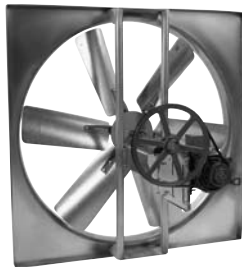
**MODEL RED**  
Backward Inclined  
Direct Drive  
Centrifugal Roof Exhaust



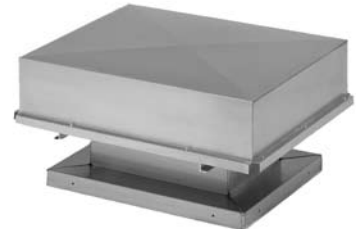
**MODEL SQB/SQD**  
Backward Inclined  
Belt Drive/Direct Drive  
Square Inline



**MODEL UBB/UBS/UBX**  
Propeller  
Belt and Direct Drive  
Upblast Roof Exhaust



**MODEL L**  
Propeller  
Belt Drive  
Sidewall Exhaust or Supply



**MODEL BGH**  
Gravity Hood  
Intake or Relief



**MODEL KSF**  
Forward Curved Blower  
Belt Drive  
Filtered Roof Supply



**MODEL TXB/TXD**  
Backward Inclined  
Belt Drive/Direct Drive  
Centrifugal Upblast



**MODEL BVS**  
Backward Inclined  
Belt Drive  
Centrifugal Utility Set

DUE TO CONTINUING RESEARCH S&P RESERVES THE RIGHT TO CHANGE SPECIFICATIONS WITHOUT NOTICE



6393 POWERS AVENUE  
JACKSONVILLE, FLORIDA 32217  
P. 800.961.7370 • F. 800.961.7379  
[www.solerpalau-usa.com](http://www.solerpalau-usa.com)

DISTRIBUTED BY: