

MODELS HREB-C & HRED-C

HOODED PROPELLER ROOF EXHAUST FANS



MODEL FEATURES

- Exhaust air to over 40,000 CFM up to 3/4" w.g.
- Belt drives permit easy performance adjustments when needed
- Direct drive units have low sound levels and quiet operation.
- Reversible blades available
- cULus 705 Listed (HREB-C only)

MODEL OPTIONS

| MODEL NAME | DESCRIPTION |
|------------|--|
| HREB-C | Belt Drive Hooded Propeller Roof Exhaust Fan |
| HRED-C | Direct Drive Hooded Propeller Roof Exhaust Fan |

MODEL OVERVIEW

Models HREB-C and HRED-C are roof mounted, low profile exhaust fans rated from 5,700 to over 40,000 CFM. Performances are rated to 3/4" static pressure. Seven sizes (from 24-60 inches) are available AMCA rated for Air and Sound performance. Fans, hoods and bases are available in galvanized or aluminum construction. They are used to exhaust air from a variety of commercial and industrial operations such as manufacturing and assembly plants, warehouses, garages, laundries and similar buildings.

For greater versatility, reversible blades are available as an option. Exhaust or supply air movement is achieved by a remote reversing switch. The reverse feature can provide positive or negative building pressurization with single or multiple fan units. Maximum utilization of the fans can be achieved with this inexpensive option.

The unit's low silhouette fits today's clean uncluttered building design and its standard all-galvanized construction provides years of resistance to corrosion.

Greater hood strength and weather resistance is achieved from the modular design. Heavy-gauge galvanized hood sections are cross broken and connected by a standing seam for extra strength over conventional hood designs.

The knockdown feature on the larger sizes also provides lower transit costs and ease of jobsite handling. This modular design is one of the strongest and easiest to assemble in the industry. Hood sizes 58 to 78 inch (represents fan sizes 24 to 36 inch) ship assembled. Hood sizes 87 to 123 inch (represent fan sizes 42 to 60 inch) ship knockdown or can be special ordered assembled.

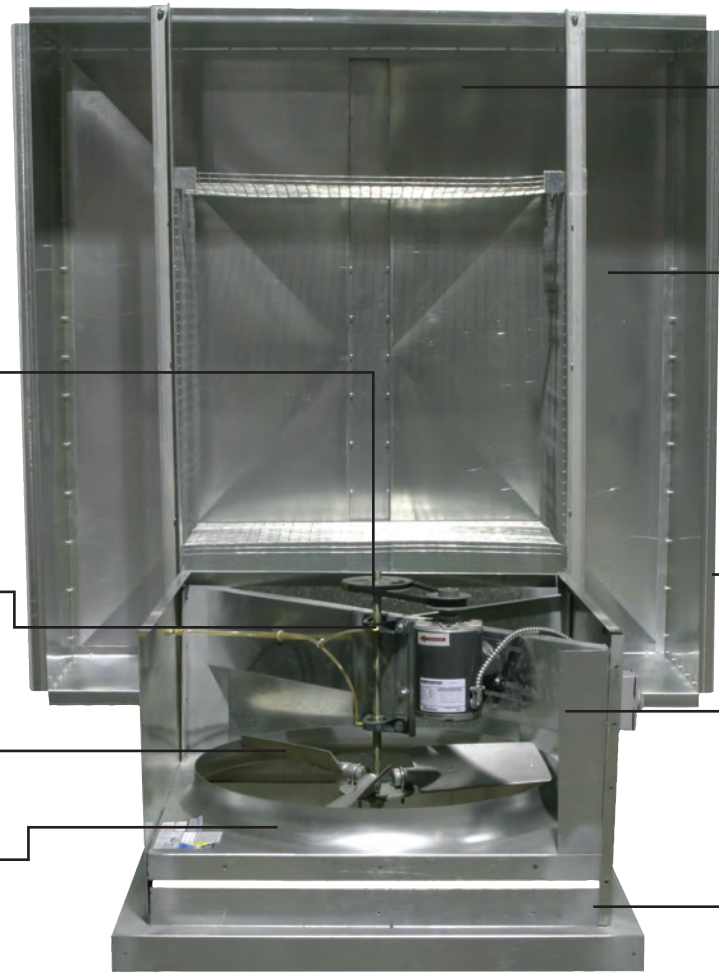
For damper maintenance, an entire side panel of the fan stack easily removes for access. The hood hinges open for motor access. The belt drive fan units all have outboard drives and adjustable motor bases for easy maintenance. These features are standard.

2 year fan housing warranty, 1 year motor warranty

All specifications are subject to change without notice unless approved in submittal by Soler & Palau.



CONSTRUCTION FEATURES AND OPTIONS



All galvanized and welded construction.

Drives (belt drive)

Adjustable pitch through 3HP, sized for minimum 150% of drive HP with outboard drives for ease of maintenance.

Bearings (belt drive)

Cast iron pillow blocks, double sealed and prelubricated, designed for 200,000 hour life.

Propeller

Adjustable pitch aluminum airfoil blades.

Panel Assembly

All welded, heavy-duty spun galvanized structure for reliable and efficient operation.

AMCA Seal

Assures rating of Air and Sound performance.

Factory Run & Tested

Assures dependable operation.

Hood
Modular hood design for maximum strength and lower cost.

Hood
Heavy-gauge galvanized steel (aluminum optional) pivots for access to fan - removal is not necessary.

Rain Gutter
To prevent water entrainment.

Access Panel
Removable side panel for fan and damper access.

Stack/Curb Cap
All galvanized heavy-gauge steel. (aluminum optional)



UL Standard 705 (optional) Listing assures electrical safety and reliability. Not available on HRED-C units.

CONSTRUCTION/SPECIFICATION CHECKLIST

Panel Assembly

- Heavy-gauge G90 galvanized steel panel.
- One piece spun venturi for maximum efficiency.
- All welded support structure of minimum schedule 40 galvanized pipe.
- Motor/bearing plates of minimum 10 gauge galvanized steel.
- All welds coated with cold galvanized paint.

Hood

- All heavy-gauge G90 galvanized steel.
- Low silhouette design for pleasing appearance.
- Unique design rain gutter minimizes water entrainment.
- Gutter provides additional hood strength and rigidity.
- Modular design for extra strength and cost savings.

Base

- All galvanized construction for corrosion resistance.
- Secures fan unit to roof curb.
- Elevates fan unit above curb for ease of damper installation.
- Removable panel for damper access.

Propeller

- Two, three, four or six airfoil aluminum blades.
- Steel hub plate with steel taper lock bushing.
- Hub finished with corrosion resistant epoxy paint.
- Adjustable pitch for optimum efficiency.

Drives (belt drive models)

- Sized for minimum 150% of drive horsepower.
- Single belt adjustable pitch sheaves through 3HP.
- Two belt fixed pitch sheaves 5HP through 10HP.
- Adjustable pitch sheaves are optional above 3HP.
- Adjustable tension rods or slide base for belt adjustment.
- Nonstatic oil resistant v-belts.
- Keyed, turned, ground and polished shafts with an anti-rust coating.

Bearings

- Bearings designed for minimum 200,000 hour life, L50.
- Cast iron self-aligning pillow block ball bearings.
- Bearings are sealed, prelubricated with relube fittings.

Motors

- Brands are nationally recognized and locally serviced.
- Open drip-proof construction is standard.
- High-efficiency, explosion proof, totally enclosed, multi-speed and corrosion duty motors can be specified.

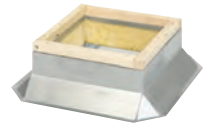
AMCA Seal

- Assures ratings of Air and Sound performance.



OPTIONS/ACCESSORIES

Roof Curb: Prefabricated heavy-gauge galvanized steel, welded construction, 12" high (other heights are also available) with 1-1/2" wood nailer. Assures perfect fit of exhauster to roof opening. Options include burglar bars, single or double pitch construction and hinged curbs for easy duct access.



Disconnect Switch: Nonfused safety disconnects are available for all motor sizes in rain-tight or open enclosures. Explosion proof, Nema 4 and 4X are also available.



Motor Operated Damper: Motor operated for positive closure against backdraft.

Automatic Damper: Automatic (counter-balanced) damper for ease in installation.

Bird Screen: 1/2" x 1" wire mesh guard prevents birds and other objects from entering fan.

Remote Drive: The motor is mounted on the stack exterior, out of the airstream. A motor cover is provided.

Fiberglass Free Insulation: Hood crown is covered with 1/2" high performance and ecologically friendly fiberglass free insulation only, to reduce fan sound and condensation.

Extended Grease Lines: Extended copper grease lines allow motor and/or fan bearings to be relubricated from the exterior.

Motor Safety Chain: Secures motor to fan unit to prevent motor accidentally falling during maintenance.

Aluminum Construction: Optional aluminum construction available for external fan components (hood and base) only.

Special Coatings: Powered roof exhausters often require special coatings for protective and decorative purposes. Available coatings include: Synthetic Resin, Epoxy, and Heresite (air-dried phenolic). Contact your representative or the factory for more information on available coatings and colors.



PERFORMANCE DATA - HREB-C BELT DRIVE

| Model HREB-C | CFM / BHP @ Static Pressure | | | | | | | HP | RPM | Sones @ 5 ft. |
|-----------------|-----------------------------|----------------|----------------|----------------|----------------|----------------|----------------|-------|------|---------------------|
| | 0 | 1/8 | 1/4 | 3/8 | 1/2 | 5/8 | 3/4 | | | |
| 24 | 5702 / 0.377 | 4678 / 0.400 | 3661 / 0.397 | 2480 / 0.392 | 1159 / 0.416 | - | - | 1/3 | 970 | 14.9 |
| | 6525 / 0.565 | 5613 / 0.599 | 4764 / 0.599 | 3792 / 0.595 | 2730 / 0.587 | 1582 / 0.624 | - | 1/2 | 1110 | 18.3 |
| | 7466 / 0.847 | 6653 / 0.894 | 5915 / 0.896 | 5153 / 0.896 | 4271 / 0.890 | 3399 / 0.891 | 2240 / 0.896 | 3/4 | 1270 | 23 |
| | 8230 / 1.135 | 7482 / 1.193 | 6806 / 1.202 | 6134 / 1.201 | 5417 / 1.193 | 4592 / 1.193 | 3809 / 1.194 | 1 | 1400 | 26 |
| | 9318 / 1.646 | 8647 / 1.722 | 8038 / 1.744 | 7450 / 1.743 | 6850 / 1.743 | 6220 / 1.733 | 5501 / 1.731 | 1-1/2 | 1585 | 32 |
| | 10347 / 2.254 | 9735 / 2.345 | 9176 / 2.382 | 8641 / 2.389 | 8113 / 2.384 | 7569 / 2.386 | 7003 / 2.382 | 2 | 1760 | 38 |
| 30 | 7209 / 0.404 | 5018 / 0.387 | 3176 / 0.370 | - | - | - | - | 1/3 | 680 | 13.2 |
| | 8269 / 0.610 | 6517 / 0.591 | 4594 / 0.558 | 3076 / 0.565 | - | - | - | 1/2 | 780 | 16.3 |
| | 9435 / 0.906 | 7802 / 0.879 | 6092 / 0.852 | 4715 / 0.826 | 3378 / 0.842 | - | - | 3/4 | 890 | 20 |
| | 10389 / 1.209 | 8811 / 1.173 | 7407 / 1.157 | 5963 / 1.135 | 4761 / 1.106 | 3524 / 1.129 | - | 1 | 980 | 24 |
| | 11874 / 1.805 | 10351 / 1.752 | 9420 / 1.752 | 7876 / 1.698 | 6728 / 1.674 | 5675 / 1.648 | 4619 / 1.667 | 1-1/2 | 1120 | 29 |
| | 13093 / 2.420 | 11601 / 2.350 | 10764 / 2.349 | 9647 / 2.312 | 8292 / 2.277 | 7287 / 2.216 | 6332 / 2.209 | 2 | 1235 | 34 |
| 36 | 15001 / 3.640 | 13542 / 3.539 | 12783 / 3.532 | 12052 / 3.533 | 10959 / 3.478 | 9741 / 3.424 | 8829 / 3.431 | 3 | 1415 | 44 |
| | 8786 / 0.387 | 6104 / 0.389 | 2134 / 0.352 | - | - | - | - | 1/3 | 580 | 13.3 |
| | 10073 / 0.584 | 7683 / 0.594 | 5107 / 0.550 | - | - | - | - | 1/2 | 665 | 16.5 |
| | 11588 / 0.889 | 9473 / 0.904 | 7492 / 0.863 | 4732 / 0.744 | - | - | - | 3/4 | 765 | 20 |
| | 12724 / 1.176 | 10811 / 1.197 | 9014 / 1.181 | 6896 / 1.104 | 3781 / 1.012 | - | - | 1 | 840 | 23 |
| | 14542 / 1.756 | 12808 / 1.788 | 11215 / 1.788 | 9677 / 1.708 | 7717 / 1.648 | 5057 / 1.472 | - | 1-1/2 | 960 | 29 |
| 42 | 15981 / 2.331 | 14338 / 2.374 | 12909 / 2.372 | 11537 / 2.340 | 9985 / 2.263 | 8167 / 2.193 | 5673 / 1.949 | 2 | 1055 | 33 |
| | 18329 / 3.516 | 16799 / 3.580 | 15675 / 3.578 | 14345 / 3.579 | 12167 / 3.530 | 11855 / 3.414 | 10286 / 3.301 | 3 | 1210 | 42 |
| | 21737 / 5.865 | 20331 / 5.964 | 19363 / 5.974 | 18375 / 5.969 | 17234 / 5.969 | 16243 / 5.940 | 15229 / 5.892 | 5 | 1435 | 55 |
| | 11430 / 0.55 | 7602 / 0.51 | 3608 / 0.50 | - | - | - | - | 1/2 | 500 | 13.8 |
| | 13031 / 0.82 | 9733 / 0.78 | 6209 / 0.72 | - | - | - | - | 3/4 | 570 | 17.3 |
| | 14402 / 1.11 | 11464 / 1.07 | 8258 / .99 | 5111 / .99 | - | - | - | 1 | 630 | 20 |
| 48 | 16460 / 1.66 | 13936 / 1.63 | 11154 / 1.53 | 8367 / 1.46 | 5612 / 1.48 | - | - | 1-1/2 | 720 | 25 |
| | 18174 / 2.23 | 15913 / 2.21 | 13435 / 2.11 | 10887 / 2.01 | 8389 / 1.96 | 5881 / 2.00 | 3067 / 2.15 | 2 | 795 | 29 |
| | 20804 / 3.35 | 18847 / 3.33 | 16747 / 3.24 | 14532 / 3.11 | 12309 / 3.00 | 10124 / 2.95 | 7953 / 2.96 | 3 | 910 | 36 |
| | 24690 / 5.59 | 23047 / 5.59 | 21347 / 5.52 | 19539 / 5.39 | 17671 / 5.24 | 15792 / 5.09 | 13930 / 4.98 | 5 | 1080 | 49 |
| | 15781 / 0.832 | 12968 / 0.908 | 9524 / 0.814 | - | - | - | - | 3/4 | 450 | 16.3 |
| | 17360 / 1.107 | 14879 / 1.199 | 11860 / 1.102 | 8269 / 1.111 | - | - | - | 1 | 495 | 18.9 |
| 54 | 19814 / 1.647 | 17669 / 1.743 | 15126 / 1.761 | 12415 / 1.612 | 9098 / 1.660 | - | - | 1-1/2 | 565 | 23 |
| | 21919 / 2.229 | 19977 / 2.344 | 17838 / 2.432 | 15433 / 2.384 | 12834 / 2.182 | 9694 / 2.256 | - | 2 | 625 | 27 |
| | 25075 / 3.337 | 23364 / 3.512 | 21654 / 3.560 | 19566 / 3.587 | 17502 / 3.470 | 15250 / 3.264 | 12688 / 3.232 | 3 | 715 | 32 |
| | 29809 / 5.606 | 28351 / 5.885 | 26957 / 5.894 | 25466 / 6.081 | 23707 / 6.096 | 21940 / 6.000 | 20177 / 5.563 | 5 | 850 | 43 |
| | 33842 / 8.204 | 32546 / 8.574 | 31316 / 8.634 | 30072 / 8.712 | 28720 / 8.921 | 27168 / 8.936 | 25584 / 8.776 | 7-1/2 | 965 | 53 |
| | 37349 / 11.028 | 36166 / 11.478 | 35044 / 11.602 | 33932 / 11.595 | 32782 / 11.718 | 31524 / 12.008 | 30116 / 12.021 | 10 | 1065 | 62 |
| 60 | 28075 / 2.084 | 24746 / 2.252 | 21152 / 2.357 | 17397 / 2.317 | 13225 / 2.128 | - | - | 2 | 530 | 28 |
| | 32312 / 3.177 | 29421 / 3.371 | 27975 / 3.468 | 23156 / 3.593 | 19939 / 3.532 | 16352 / 3.241 | - | 3 | 610 | 34 |
| | 37874 / 5.116 | 35407 / 5.343 | 32940 / 5.570 | 30341 / 5.745 | 27494 / 5.789 | 24714 / 5.687 | 21912 / 5.522 | 5 | 715 | 44 |
| | 43171 / 7.576 | 41007 / 7.836 | 38843 / 8.095 | 36670 / 8.350 | 34336 / 8.520 | 31840 / 8.574 | 29337 / 8.413 | 7-1/2 | 815 | 55 |
| | 47674 / 10.203 | 45714 / 10.489 | 43754 / 10.775 | 41794 / 11.061 | 39797 / 11.325 | 37648 / 11.488 | 35385 / 11.546 | 10 | 900 | 66 |
| | 28479 / 2.264 | 23920 / 2.303 | 19370 / 2.184 | 13910 / 1.862 | - | - | - | 2 | 450 | 26 |
| 60 | 33225 / 3.596 | 29133 / 3.675 | 25508 / 3.586 | 21380 / 3.471 | 16669 / 2.978 | 10364 / 2.639 | - | 3 | 525 | 33 |
| | 38288 / 5.502 | 35426 / 5.623 | 31547 / 5.597 | 28228 / 5.496 | 24575 / 5.311 | 20563 / 5.083 | 15845 / 4.517 | 5 | 605 | 41 |
| | 44301 / 8.523 | 40836 / 8.697 | 38290 / 8.708 | 35595 / 8.567 | 32709 / 8.512 | 29610 / 8.222 | 26232 / 7.869 | 7-1/2 | 700 | 53 |
| | 48414 / 11.124 | 45118 / 11.338 | 42732 / 11.372 | 40389 / 11.315 | 37818 / 11.099 | 35137 / 11.120 | 32275 / 10.731 | 10 | 765 | 62 |

Performance certified is for Installation Type A: Free inlet, Free outlet. BHP does not include transmission losses. The sound ratings shown are loudness values in fan sones at 5 ft. (1.5m) in a hemispherical free field calculated per AMCA Standard 301. Values shown are installation Type A: free inlet fan sone levels.



S&P USA Ventilation Systems, LLC., Div. of Soler & Palau Ventilation Group, certifies that the Models HREB-C shown herein are licensed to bear the AMCA Seal. The ratings shown are based on test and procedures performed in accordance with AMCA Publication 211 and AMCA Publication 311 and comply with the requirement of the AMCA Certified Ratings Program.



PERFORMANCE DATA - HRED-C DIRECT DRIVE

| Model HRED-C | CFM / BHP @ Static Pressure | | | | | | | HP | RPM | Sones @ 5 ft. |
|-----------------|-----------------------------|---------------|---------------|---------------|---------------|---------------|--------------|-------|------|------------------|
| | 0 | 1/8 | 1/4 | 3/8 | 1/2 | 5/8 | 3/4 | | | |
| 24 | 5991 / 0.541 | 5222 / 0.607 | 4453 / 0.617 | 2966 / 0.597 | 2203 / 0.609 | | | 1/2 | 870 | 16.1 |
| | 6908 / 0.867 | 6081 / 0.86 | 5194 / 0.854 | 3735 / 0.831 | 2780 / 0.842 | 1193 / 0.851 | | 3/4 | 870 | 18 |
| | 5219 / 0.325 | 4327 / 0.384 | 3555 / 0.398 | 2526 / 0.381 | 1709 / 0.363 | | | 1/3 | 1160 | 19.7 |
| | 6390 / 0.570 | 5597 / 0.622 | 4739 / 0.627 | 3798 / 0.617 | 2572 / 0.617 | 1297 / 0.606 | | 1/2 | 1160 | 21 |
| | 7394 / 0.892 | 6553 / 0.902 | 5687 / 0.893 | 4861 / 0.874 | 3918 / 0.884 | 2755 / 0.892 | 1715 / 0.983 | 3/4 | 1160 | 23 |
| | 8361 / 1.237 | 7480 / 1.247 | 6758 / 1.248 | 6041 / 1.239 | 5084 / 1.215 | 3481 / 1.239 | 2323 / 1.258 | 1 | 1160 | 24 |
| | 8800 / 1.662 | 8133 / 1.726 | 7560 / 1.746 | 6979 / 1.736 | 6254 / 1.710 | 4759 / 1.694 | 4216 / 1.694 | 1-1/2 | 1160 | 25 |
| | 7115 / 0.896 | 6567 / 1.021 | 5995 / 1.045 | 5406 / 1.102 | 4802 / 1.106 | 4138 / 1.114 | 3369 / 1.083 | 1 | 1750 | 31 |
| | 9535 / 1.697 | 8870 / 1.719 | 8189 / 1.728 | 7487 / 1.721 | 6759 / 1.714 | 5990 / 1.683 | 5159 / 1.686 | 1-1/2 | 1750 | 43 |
| | 10288 / 2.216 | 9673 / 2.306 | 9112 / 2.342 | 8574 / 2.349 | 8042 / 2.343 | 7494 / 2.346 | 6924 / 2.337 | 2 | 1750 | 37 |
| 30 | 8058 / 0.597 | 6645 / 0.627 | 5130 / 0.612 | 3974 / 0.570 | | | | 1/2 | 870 | 16.9 |
| | 8885 / 0.852 | 7507 / 0.891 | 6113 / 0.888 | 5383 / 0.878 | 4050 / 0.838 | 2400 / 0.858 | | 3/4 | 870 | 19.7 |
| | 10095 / 1.255 | 8508 / 1.256 | 7085 / 1.208 | 5837 / 1.185 | 4593 / 1.149 | 3590 / 1.140 | 2116 / 1.186 | 1 | 870 | 20 |
| | 11015 / 1.890 | 9970 / 1.890 | 8893 / 1.874 | 8361 / 1.849 | 7542 / 1.690 | 5640 / 1.721 | 4904 / 1.750 | 1-1/2 | 870 | 21 |
| | 12350 / 2.621 | 11159 / 2.505 | 9333 / 2.460 | 7529 / 2.408 | 8180 / 2.307 | 6815 / 2.642 | 5793 / 2.352 | 2 | 870 | 24 |
| | 9274 / 0.860 | 8023 / 0.886 | 6518 / 0.863 | 4673 / 0.820 | 2755 / 0.816 | | | 3/4 | 1160 | 25 |
| | 10694 / 1.267 | 9425 / 1.257 | 7878 / 1.231 | 6528 / 1.159 | 4811 / 1.140 | 2873 / 1.216 | | 1 | 1160 | 29 |
| | 12020 / 1.923 | 10870 / 1.924 | 9633 / 1.896 | 8269 / 1.849 | 7103 / 1.815 | 6316 / 1.821 | 5272 / 1.778 | 1-1/2 | 1160 | 30 |
| | 12847 / 2.523 | 11665 / 2.545 | 10635 / 2.542 | 9601 / 2.517 | 8715 / 2.493 | 7782 / 2.446 | 6963 / 2.324 | 2 | 1160 | 33 |
| | 14635 / 3.789 | 13612 / 3.698 | 12046 / 3.592 | 10947 / 3.559 | 10069 / 3.537 | 9085 / 3.531 | 8146 / 3.391 | 3 | 1160 | 37 |
| 36 | 12938 / 2.463 | 12151 / 2.534 | 11337 / 2.536 | 10304 / 2.536 | 9364 / 2.532 | 8331 / 2.501 | 7503 / 2.464 | 2 | 1750 | 46 |
| | 15195 / 3.850 | 14454 / 3.896 | 13595 / 3.898 | 12668 / 3.900 | 11692 / 3.826 | 10813 / 3.791 | 9585 / 3.667 | 3 | 1750 | 54 |
| | 10708 / 0.780 | 9073 / 0.833 | 7377 / 0.845 | 5612 / 0.808 | | | | 3/4 | 870 | 22 |
| | 12730 / 1.152 | 11041 / 1.200 | 9168 / 1.184 | 7346 / 1.169 | 5061 / 1.101 | | | 1 | 870 | 26 |
| | 13685 / 1.745 | 12339 / 1.718 | 10479 / 1.629 | 8588 / 1.591 | 6455 / 1.569 | 3906 / 1.606 | | 1-1/2 | 870 | 30 |
| | 16374 / 2.409 | 14844 / 2.388 | 13309 / 2.392 | 11779 / 2.312 | 10037 / 2.191 | 7404 / 2.162 | 4676 / 2.102 | 2 | 870 | 28 |
| | 18199 / 3.466 | 16805 / 3.322 | 15502 / 3.285 | 14102 / 3.277 | 12081 / 3.118 | 9540 / 3.143 | 6836 / 3.268 | 3 | 870 | 32 |
| | 14053 / 1.744 | 12929 / 1.849 | 11650 / 1.865 | 10402 / 1.895 | 9167 / 1.882 | 7833 / 1.845 | 6471 / 1.769 | 1-1/2 | 1160 | 34 |
| | 14679 / 2.115 | 13505 / 2.186 | 12290 / 2.221 | 10972 / 2.206 | 9636 / 2.189 | 8405 / 2.172 | 7148 / 2.158 | 2 | 1160 | 35 |
| | 17582 / 3.577 | 16319 / 3.541 | 15067 / 3.534 | 13775 / 3.523 | 12491 / 3.523 | 11275 / 3.512 | 9950 / 3.487 | 3 | 1160 | 37 |
| 21936 / 5.769 | 20539 / 5.574 | 19232 / 5.503 | 17980 / 5.498 | 16773 / 5.523 | 15581 / 5.523 | 14152 / 5.480 | 5 | 1160 | 47 | |
| 15035 / 3.422 | 14138 / 3.515 | 13355 / 3.547 | 12613 / 3.550 | 11869 / 3.544 | 11060 / 3.555 | 10171 / 3.448 | 3 | 1750 | 74 | |
| 20465 / 5.422 | 19705 / 5.639 | 18927 / 5.770 | 18129 / 5.832 | 17312 / 5.843 | 16476 / 5.826 | 15609 / 5.903 | 5 | 1750 | 75 | |
| 24839 / 8.311 | 24078 / 8.482 | 23262 / 8.608 | 22392 / 8.685 | 21480 / 8.718 | 20544 / 8.716 | 19609 / 8.663 | 7-1/2 | 1750 | 81 | |

Performance shown is for Installation Type A: Free inlet, Free outlet. BHP does not include drive losses.



S&P USA Ventilation Systems, LLC., Div. of Soler & Palau Ventilation Group, certifies that the Models HRED-C shown herein are licensed to bear the AMCA Seal. The ratings shown are based on test and procedures performed in accordance with AMCA Publication 211 and comply with the requirement of the AMCA Certified Ratings Program.



PERFORMANCE DATA - HRED-C DIRECT DRIVE cont.

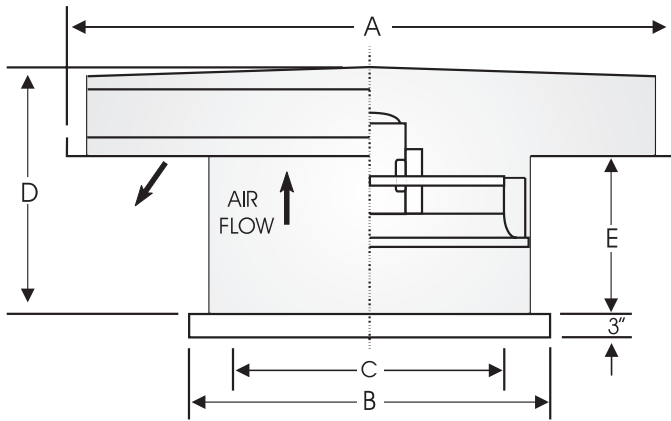
| Model HRED-C | CFM / BHP @ Static Pressure | | | | | | | HP | RPM | Sones @ 5 ft. |
|-----------------|-----------------------------|----------------|----------------|----------------|----------------|----------------|----------------|-------|------|------------------|
| | 0 | 1/8 | 1/4 | 3/8 | 1/2 | 5/8 | 3/4 | | | |
| 42 | 6570 / 1.609 | 14167 / 1.551 | 11262 / 1.420 | 7973 / 1.426 | - | - | - | 1-1/2 | 870 | 33 |
| | 19940 / 2.305 | 17744 / 2.305 | 15655 / 2.306 | 13058 / 2.215 | 10682 / 2.153 | - | - | 2 | 870 | 37 |
| | 21640 / 3.95 | 19785 / 3.89 | 17763 / 3.81 | 15602 / 3.72 | 13345 / 3.67 | 11007/3.67 | 8532 3.73 | 3 | 870 | 41 |
| | 21966 / 3.308 | 20500 / 3.444 | 18953 / 3.489 | 17344 / 3.492 | 15718 / 3.518 | 14022 / 3.444 | 12180 / 3.312 | 3 | 1160 | 58 |
| | 26310 / 5.833 | 24753 / 5.770 | 23272 / 5.771 | 21656 / 5.642 | 19945 / 5.643 | 18332 / 5.356 | 16737 / 4.609 | 5 | 1160 | 59 |
| | 20253 / 5.745 | 19103 / 5.648 | 17959 / 5.619 | 16823 / 5.620 | 15703 / 5.493 | 14611 / 5.497 | 13403 / 5.297 | 5 | 1750 | 93 |
| 48 | 20688 / 2.317 | 19025 / 2.402 | 16940 / 2.418 | 15074 / 2.389 | 13092 / 2.184 | 10681 / 2.196 | 7827 / 2.224 | 2 | 870 | 41 |
| | 25857 / 3.483 | 23353 / 3.470 | 20843 / 3.448 | 18197 / 3.344 | 15375 / 3.114 | 12299 / 3.178 | 8647 / 2.975 | 3 | 870 | 44 |
| | 30637 / 5.760 | 28009 / 5.547 | 25382 / 5.505 | 22872 / 5.527 | 20457 / 5.573 | 17925 / 5.584 | 14299 / 5.353 | 5 | 870 | 48 |
| | 34585 / 8.315 | 33085 / 8.498 | 31514 / 8.610 | 29874 / 8.656 | 28175 / 8.648 | 26449 / 8.493 | 24689 / 8.506 | 7-1/2 | 870 | 50 |
| | 37488 / 11.819 | 35927 / 11.332 | 34497 / 11.090 | 32665 / 10.976 | 30613 / 10.985 | 28509 / 10.499 | 26495 / 10.506 | 10 | 870 | 56 |
| | 30735 / 5.883 | 28107 / 5.486 | 25346 / 5.411 | 22591 / 5.430 | 19994 / 5.239 | 17423 / 4.666 | 14714 / 4.779 | 5 | 1160 | 71 |
| | 34476 / 8.257 | 32589 / 8.222 | 30723 / 8.227 | 28848 / 8.230 | 26934 / 8.174 | 24944 / 7.914 | 22873 / 7.765 | 7-1/2 | 1160 | 79 |
| | 38005 / 11.916 | 35927 / 11.509 | 34081 / 11.356 | 32323 / 11.324 | 30562 / 11.337 | 28647 / 10.825 | 26258 / 10.795 | 10 | 1160 | 99 |
| 54 | 27942 / 3.470 | 25431 / 3.528 | 22691 / 3.539 | 19504 / 3.486 | 16154 / 3.296 | 12685 / 3.033 | 9565 / 2.570 | 3 | 870 | 43 |
| | 37098 / 4.879 | 34410 / 5.044 | 31722 / 5.209 | 29013 / 5.310 | 26232 / 5.322 | 23290 / 5.270 | 20389 / 5.119 | 5 | 870 | 58 |
| | 44330 / 8.857 | 41565 / 8.595 | 38801 / 8.333 | 36024 / 8.089 | 33088 / 8.026 | 29922 / 8.003 | 26445 / 7.749 | 7-1/2 | 870 | 67 |
| | 43655 / 11.930 | 40830 / 11.397 | 38170 / 11.216 | 35619 / 11.208 | 33151 / 11.013 | 30745 / 11.003 | 28251 / 10.863 | 10 | 870 | 69 |
| | 27088 / 5.860 | 25568 / 5.788 | 23941 / 5.772 | 22218 / 5.777 | 20425 / 5.606 | 18586 / 5.506 | 16718 / 5.340 | 5 | 1160 | 87 |
| 36365 / 8.495 | 34710 / 8.753 | 33103 / 8.897 | 31500 / 8.957 | 29856 / 8.955 | 28086 / 8.811 | 26063 / 8.824 | 7-1/2 | 1160 | 92 | |
| 60 | 48780 / 11.909 | 45778 / 11.745 | 42747 / 11.728 | 39680 / 11.667 | 36563 / 11.253 | 33414 / 10.753 | 30299 / 10.717 | 10 | 870 | 88 |

Performance shown is for Installation Type A: Free inlet, Free outlet. BHP does not include drive losses.

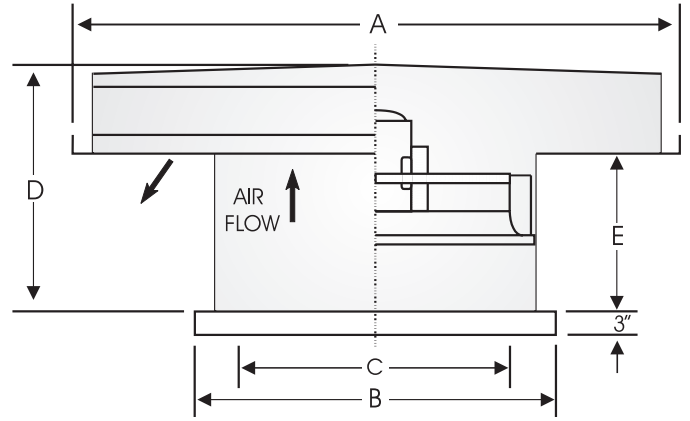


S&P USA Ventilation Systems, LLC, Div. of Soler & Palau Ventilation Group, certifies that the Models HRED-C shown herein are licensed to bear the AMCA Seal. The ratings shown are based on test and procedures performed in accordance with AMCA Publication 211 and comply with the requirement of the AMCA Certified Ratings Program.

DIMENSIONS



Model HREB-C Belt Drive



Model HRED-C Direct Drive

| Size | Dimensions (Inches) | | | | | | Metal Gauges | | | | Avg. Wt. |
|------|---------------------|----|----|----|----|--------|--------------|-----------|------|----------|----------|
| | A | B | C | D | E | F | Hood Crown | Hood Side | Base | Curb Cap | |
| 24 | 58 | 35 | 30 | 44 | 23 | 33-1/4 | 18 | 18 | 16 | 16 | 425 |
| 30 | 66 | 41 | 36 | 44 | 23 | 39-1/4 | 18 | 18 | 16 | 16 | 550 |
| 36 | 78 | 47 | 42 | 44 | 23 | 45-1/4 | 18 | 18 | 16 | 16 | 700 |
| 42 | 87 | 53 | 48 | 51 | 30 | 51-1/4 | 18 | 16 | 16 | 16 | 800 |
| 48 | 99 | 59 | 54 | 51 | 30 | 57-1/4 | 18 | 16 | 16 | 14 | 1100 |
| 54 | 111 | 65 | 60 | 51 | 30 | 63-1/4 | 18 | 16 | 14 | 14 | 1300 |
| 60 | 111 | 71 | 66 | 51 | 30 | 69-1/4 | 18 | 16 | 14 | 14 | 1550 |
| 60 | 123 | 71 | 66 | 51 | 30 | 69-1/4 | 18 | 16 | 14 | 14 | 1690 |

- A - Outside dimension of square hood.
- B - Inside dimension of square curb cap.
- C - Minimum inside dimension of curb or roof opening for rated performance.
- D - Height of unit above curb cap.
- E - Height of hood opening above curb cap.
- F - Outside dimension of prefab curb.