

SC02 Sensor

Supplemental Wiring Manual for Accessories

TR-Series
TRC-Series
TRCe-Series
TRLPe-Series
TRe-Series



SC02-W

1.0 OVERVIEW	3
2.0 DIMENSIONS	3
2.1 SC02-W	3
3.0 ELECTRICAL	4
3.1 WIRING SCHEMATICS.....	4

TABLE OF SCHEMATICS

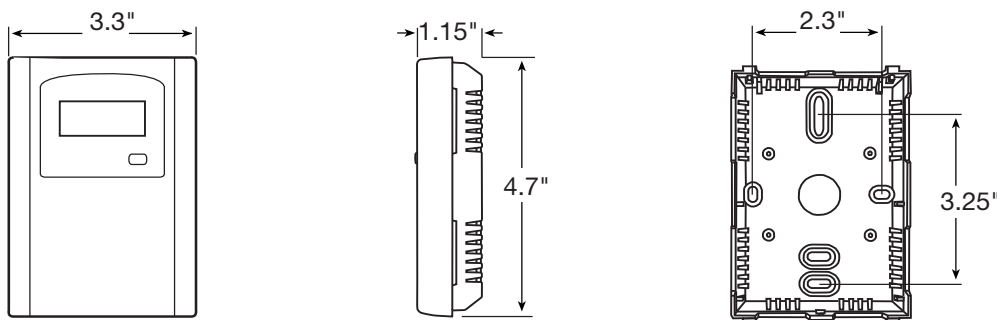
Figure 3.1.0 Wiring Schematic for TR90, TR90G, TR130, TR200, TR300 Units Only	4
Figure 3.1.1 Wiring Schematic for TRe and TRLPe-Series Units.....	4
Figure 3.1.2 Wiring Schematic for TRC1200 Units without ECM.....	5
Figure 3.1.3 Wiring Schematic for TRC1600 Units without ECM.....	5
Figure 3.1.4 Wiring Schematic for TRCe1200 Units with ECM and Terminal Block	6
Figure 3.1.5 Wiring Schematic for TRCeN500, TRCeN800, and TRCe1200 Units with ECM and Circuit Board	6
Figure 3.1.7 Wiring Schematic for TRCeN500, TRCeN800, and TRCe1200 Units with ECM and Circuit Board and Timer	7

1.0 OVERVIEW

The SC02 monitor uses a highly accurate and reliable Non-dispersive Infrared (NDIR) with state-of-the-art digital linearization and temperature compensated circuitry to detect CO2 levels in an attractive, low profile enclosure for room applications and a duct mount version provide a linear analog signal output of 4–20 mA, 0–5, or 0–10 VDC and a Normally Open (NO) relay to control an alarm or ventilation fan in various ways.

2.0 DIMENSIONS

2.1 SC02-W



3.0 ELECTRICAL

3.1 WIRING SCHEMATICS

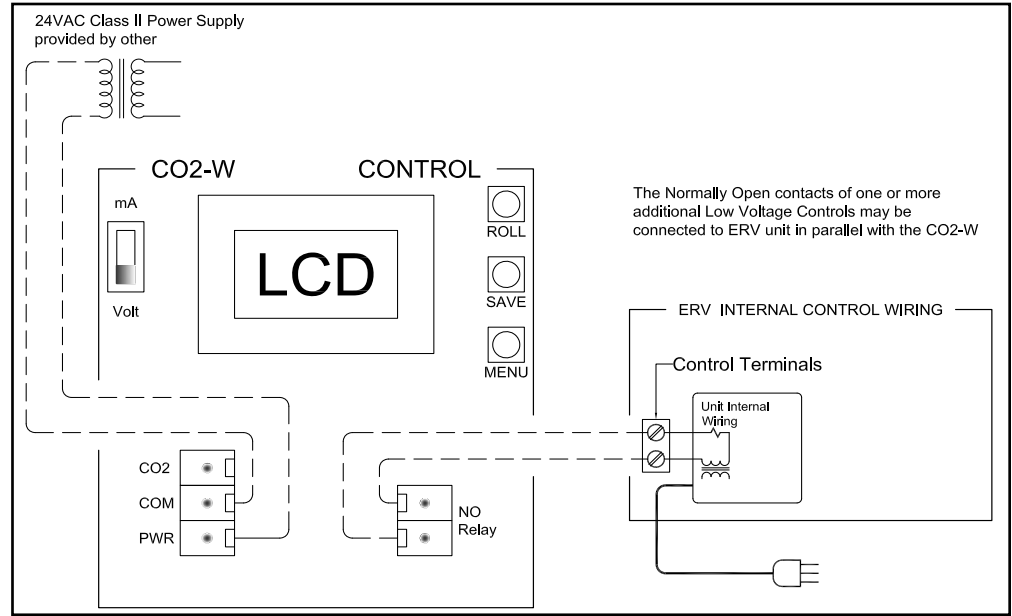


FIGURE 3.1.0 WIRING SCHEMATIC FOR TR90, TR90G, TR130, TR200, TR300 UNITS ONLY

In this example, SC02 Controller turns the Energy Recovery Ventilator (ERV) on at High speed when CO2 level exceeds SC02 Controller Relay setting.

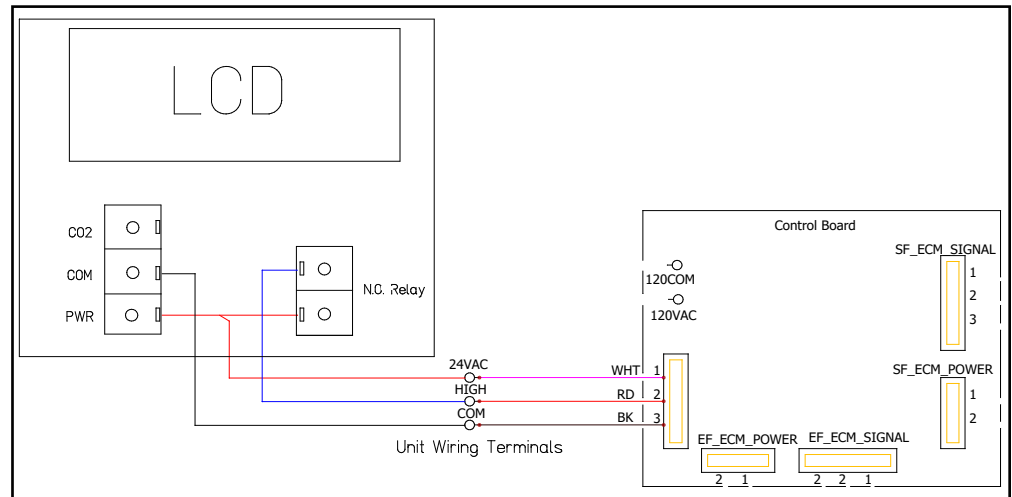


FIGURE 3.1.1 WIRING SCHEMATIC FOR TRe AND TRLPe-SERIES UNITS

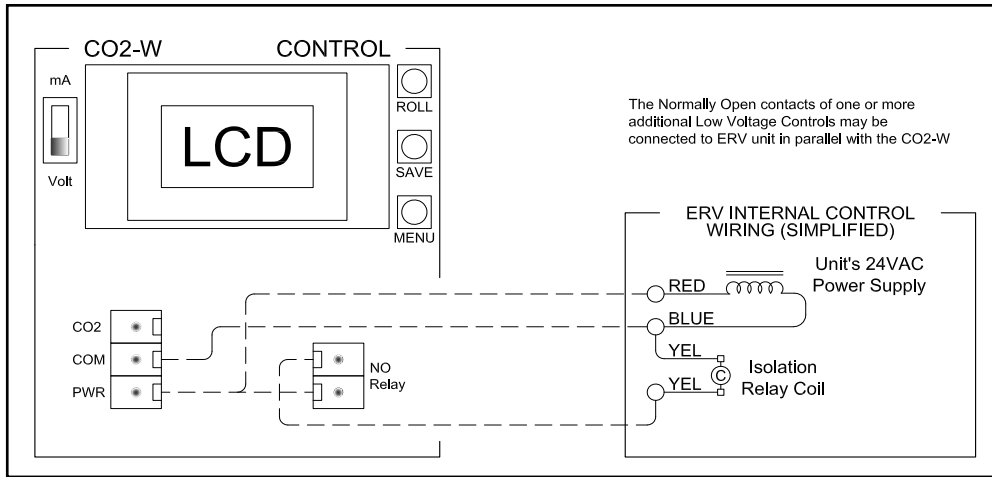


FIGURE 3.1.2 WIRING SCHEMATIC FOR TRC1200 UNITS WITHOUT ECM

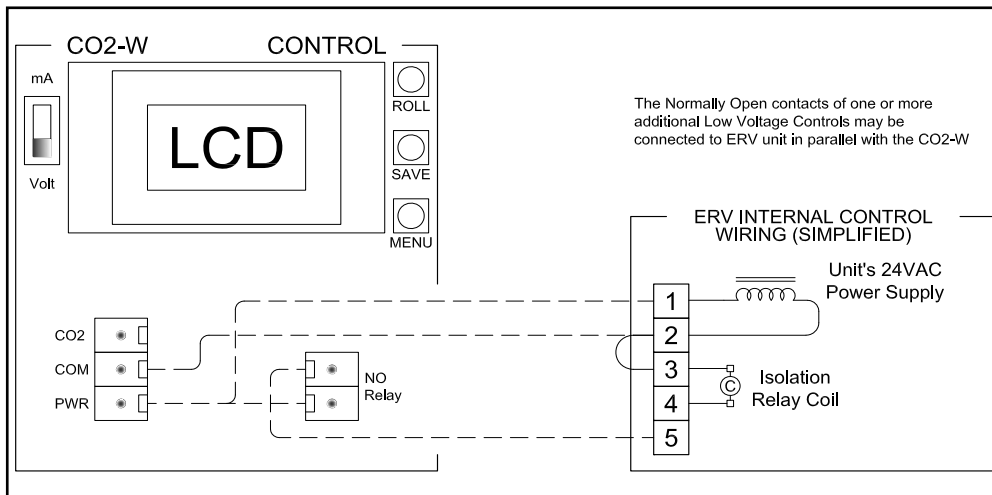


FIGURE 3.1.3 WIRING SCHEMATIC FOR TRC1600 UNITS WITHOUT ECM

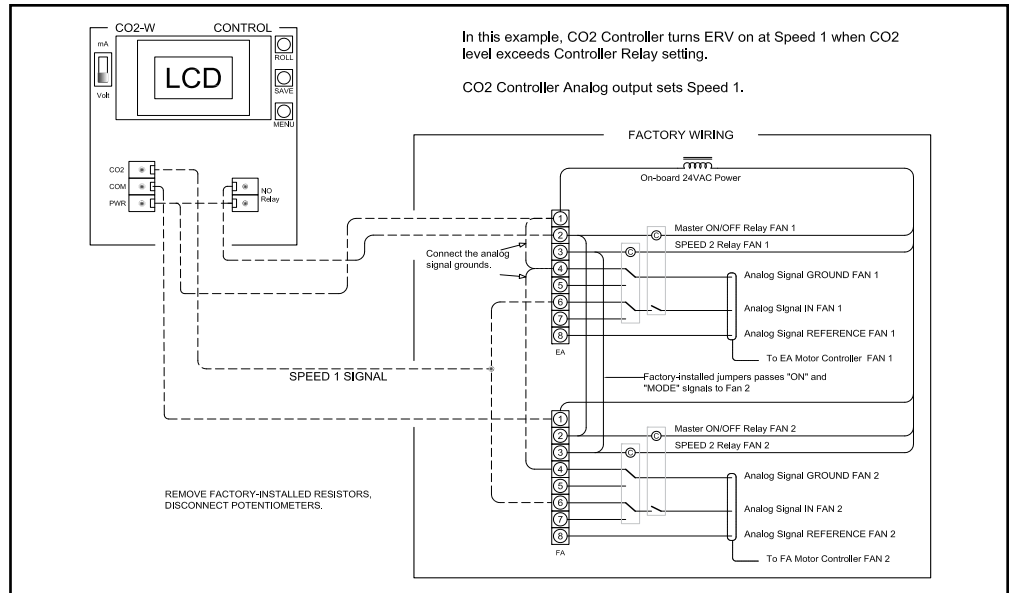


FIGURE 3.1.4 WIRING SCHEMATIC FOR TRCe1200 UNITS WITH ECM AND TERMINAL BLOCK

In this example, the SC02 Controller turns the ERV on at speed set by potentiometers when SC02 level exceeds SC02 Controller Relay setting.

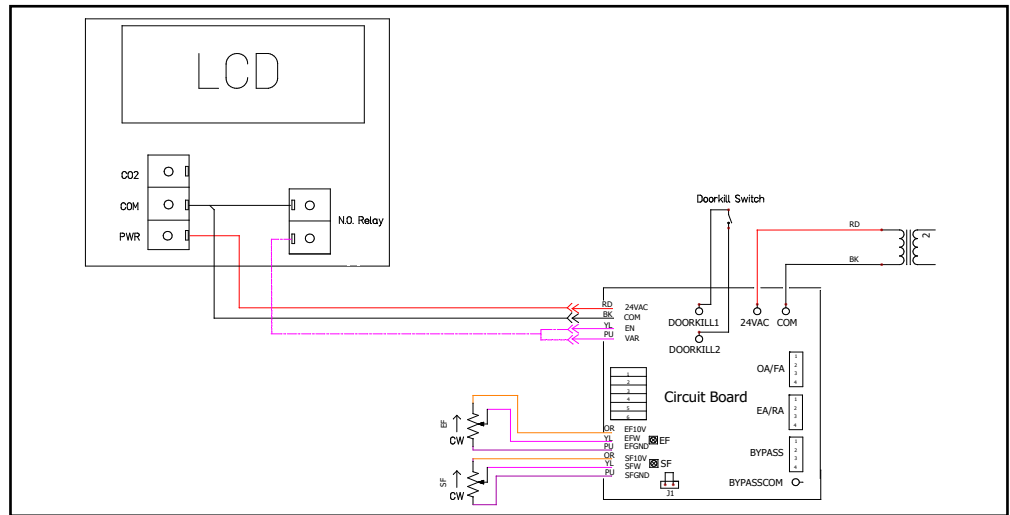


FIGURE 3.1.5 WIRING SCHEMATIC FOR TRCeN500, TRCeN800, AND TRCe1200 UNITS WITH ECM AND CIRCUIT BOARD

In this example, the ERV does not run while unoccupied, set by timer. During occupancy, ERV runs at variable Speed. SCO2 Controller sets speed based on SCO2 levels. Remove the potentiometers by cutting the wires at the potentiometer. Cap the orange and purple wires from the potentiometer with wire nuts. TRCeN500, TRCeN800, and TRCe1200 Circuit Board has two potentiometers and the cut wires can be wired in parallel back to the CO2 Controller.

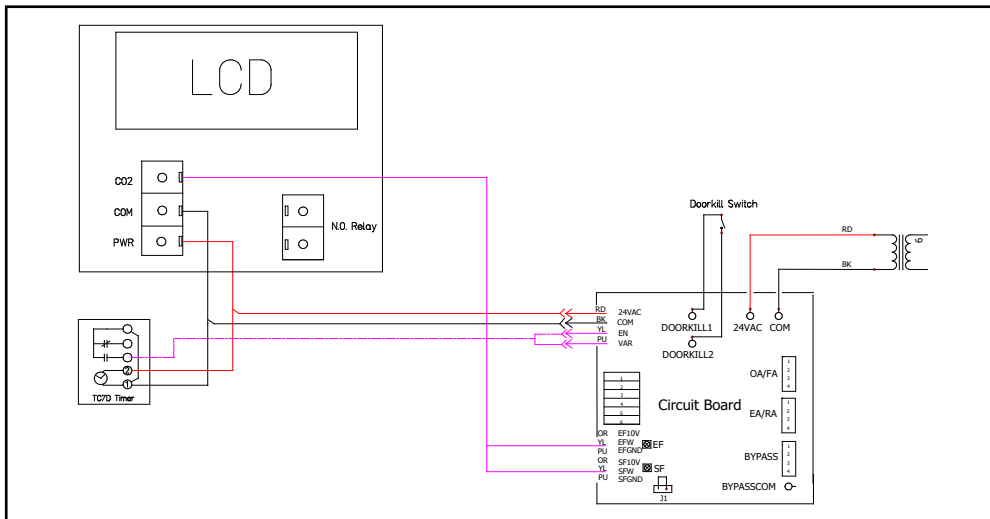


FIGURE 3.1.7 WIRING SCHEMATIC FOR TRCeN500, TRCeN800, AND TRCe1200 UNITS WITH ECM AND CIRCUIT BOARD AND TIMER

S&P USA
(800) 961-7370
FAX: (800) 961-7379
6393 POWERS AVE.
JACKSONVILLE, FLORIDA
32217 USA
WWW.SOLERPALAU-USA.COM

S&P CANADA
(416) 744-1217
FAX: (416) 744-0887
6710 MARITZ DRIVE, UNIT 7
MISSISSAUGA, ON L5W 0A1, CANADA
WWW.SOLERPALAU-CANADA.COM