



**ADVANCING
VENTILATION®**

Commercial and Residential

PRODUCT LINE OVERVIEW

1PH + 3PH | 50/60HZ

Advancing Ventilation®

01152024
JANUARY 2024

Soler&Palau
Ventilation Group



Enabling people and buildings to breathe better, cleaner air



S&P USA is part of Soler & Palau Ventilation Group, the world's largest air movement manufacturer, since 1951. We respect our humble beginnings as a small fan manufacturer while embracing the latest technological advances and practices in ventilation.

We are here to solve any ventilation problem you may have. Our Application guides make it easy to figure out what fans to use on your next project. Looking to meet the ever-changing ventilation code? We have solutions for that too!

We are committed to providing quality products through excellence in design, manufacturing, and customer support with a focus on the development of our employees and customers alike. Our best-in-class team comes from a diverse background ready to serve you.

RESIDENTIAL



Losone Select Series
Ceiling and Cabinet Ventilators
Size 100 to 700 | 44 to 701 CFM



MD and MDX-ES24VK kits
Motorized Dampers
Size 4" to 14" | Kits : 4" to 8"



PCXP
Premium CHOICE AC Motor Series
Size 50 to 150 | 50 to 150 CFM



PV-Power Vent
Inline Centrifugal Duct Fan
Size 100X to 315X | 153 to 943 CFM



PCV
Premium CHOICE Value Series
Size 50 to 80 | 50 to 80 CFM



PCD
Premium CHOICE
DC Motor Series
Size 80 to 110 | 80 to 140 CFM



PCLP
Premium CHOICE
Low Profile Series
Size 80 to 100 | 80 to 100 CFM



PCLXP
Premium CHOICE
Low Profile XP Series
Size 80 to 100 | 80 to 100 CFM



PCLPD100XHP
Premium CHOICE
DC Motor Low Profile XHP Series
Size 100 | 30 to 100 CFM



PV-DEDPV
Dryer Exhaust Duct Power Ventilator
130 CFM



PRF
Radon Mitigation Fan
Size 100 | 150 CFM





reFresh
Filtered Supply Fan
Size 8 to 10 | 7 to 182 CFM



SWF
Sidewall Fan
Size 100 to 200 | 26 to 416 CFM



TD
Inline Mixed Flow Duct Fan
Sizes 100 to 400 | 101 to 3,127 CFM

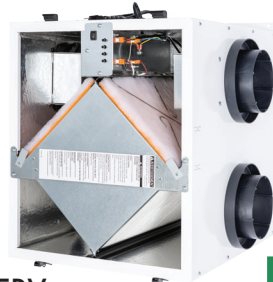


TD-Silent
Inline Mixed Flow Duct Fan
Size 125X to 200 | 28 to 502 CFM

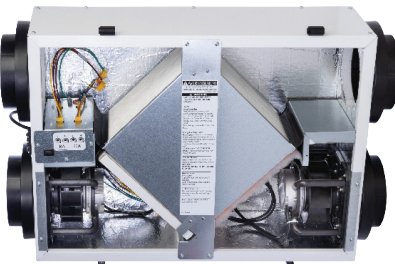
ENERGY RECOVERY VENTILATORS



TR ERV
Total Recovery
Size 90 to 300 | 36 to 311 CFM



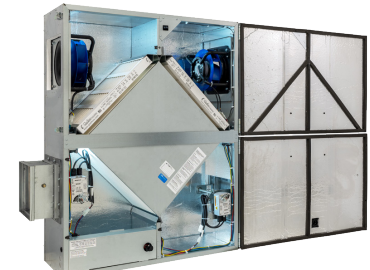
TRe ERV
Total Recovery Premium Series
Size 200 to 300 | 18 to 288 CFM



TRLPe(H) ERV
Total Recovery for Light Commercial and Single/Multi Family Homes with EC motor
Size 110 | 30 to 130 CFM



TRC and TRCV
Total Recovery for Commercial Applications
Size 1200 to 1600 | 795 to 2000 CFM



TRCe/TRCeN
Total Recovery for Commercial Applications with EC motor
Size 500 to 1200 | 133 to 1163 CFM

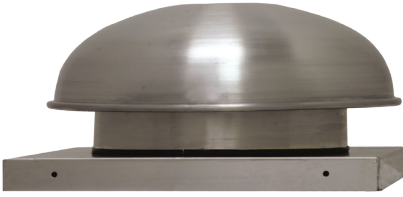


What is ECOWATT®?

S&P's Ecowatt® products are our most energy-efficient models. They use Electronically Commutated (EC) or Direct Current (DC) motors. Ecowatt® Accessories are motor control devices and systems that reduce energy consumption.



CENTRIFUGAL ROOF AND SIDEWALL



LPD
Low Profile Direct Drive Exhaust
Size 6 to 8 | 43 to 423 CFM



CWD
Direct Drive Centrifugal Sidewall Exhaust Fan
Size 7 to 16 | 66 to 3,360 CFM

DIRECT DRIVE MODELS



SDBD
Downblast Direct Drive Exhaust Fans
Size 6 to 16 | 53 to 4,984 CFM



SDBDe
Downblast Direct Drive Exhaust Fans with
EC Motor
Size 6 to 18 | 53 to 4,733 CFM



STXD/STXD-RHUL
Upblast Direct Drive Exhaust Fans
Size 6 to 16 | 56 to 4,781 CFM



STXDe/STXDe-RHUL
Upblast Direct Drive Exhaust Fans with EC motor
Size 6 to 18 | 56 to 4,492 CFM



BELT DRIVE MODELS



SDB
Downblast Exhaust fans
Size 6 to 48 | 41 to 31,563 CFM



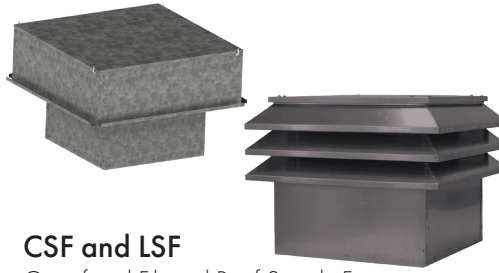
STXB/STXB-RHUL/STXB-HT2/STXB-HT
Upblast Exhaust fans
Sizes 8 to 48 | 201 to 37,920 CFM



BELT DRIVE ROOF SUPPLY FANS



KSFV
Kitchen Supply Fan
Size 9 to 20 | 475 to 12,600 CFM




CSF and LSF
Centrifugal Filtered Roof Supply Fan
Size 9 to 20 | 475 to 12,520 CFM

CENTRIFUGAL INLINE BELT DRIVE MODELS



SQB
Belt Drive Square Inline Fan
Size 7 to 42 | 86 to 24,544 CFM



CTB/CTB-RHUL 
Inline Tubular
Size 9 to 42 | 300 to 20,300 CFM

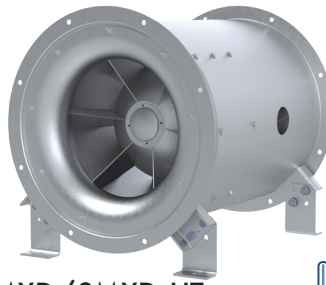


CFD
Forward Curved Belt Drive In-line
Duct Blower
Size 7 to 15 | 200 to 5,800 CFM

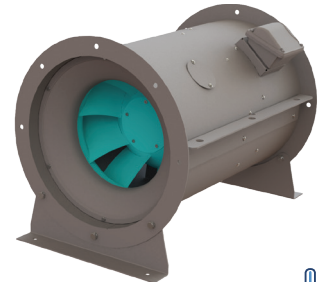
DIRECT DRIVE MODELS



SQD/eSQD 
Direct Drive Square Inline Fan
Size 6 to 15 | 83 to 3,720 CFM



SMXD/SMXD-HT 
Direct Drive Mixed Flow Fan
Size 15 to 24 | 1,300 to 17,000 CFM



SMXDK/SMXDK-HT 
Direct Drive Mixed Flow Fan
Size 9 to 30 | 350 to 24,500 CFM

INLINE TUBEAXIAL



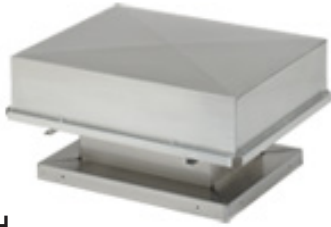
TDD
Direct Drive Inline Tubeaxial
Size 12 to 48 | 816 to 39,194 CFM



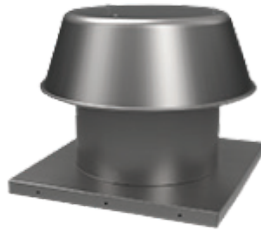
TDB
Belt Drive Inline Tubeaxial
Size 12 to 60 | 914 to 75,490 CFM



GRAVITY VENTS INTAKE/RELIEF



BGH
Fabricated Gravity Relief/Intake Ventilator
Size 12 X 12 to 72 X 144 | 536 to 90,000 CFM



RCXII/RCXII-SF
Gravity Relief/Intake Ventilators
Size 6 to 36 | 90 to 10,378 CFM



RLX
Louvered Penthouse
Size 12X12 to 84 X144 | 536 to 69,500 CFM

PROPELLER SIDEWALL DIRECT DRIVE MODELS



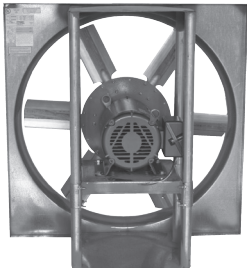
GED/GSD
Low Pressure Direct Drive
Exhaust/Supply Fans
Size 10 to 20 | 227 to 3,885 CFM



eGED/eGSD 
Low Pressure Direct Drive
Exhaust/Supply Fans with EC Motor
Size 12 to 20 | 489 to 3,718 CFM



DFE/DFS
Medium Pressure Direct Drive
Exhaust/Supply Fans
Size 10 to 30 | 37 to 12,415 CFM

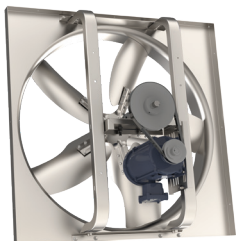


DDE/DDS
High Pressure Direct Drive Exhaust/Supply Fans
Size 24 to 60 | 3,500 to 55,800 CFM

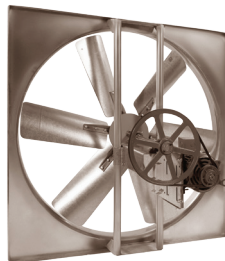


ACF
Downblast Direct Drive Exhaust Fans
Size 48 | 20,300 CFM

BELT DRIVE MODELS



LCE/LCS
Low Pressure Direct Drive
Exhaust/Supply Fans
Size 20 to 60 | 2,783 to 40,855 CFM



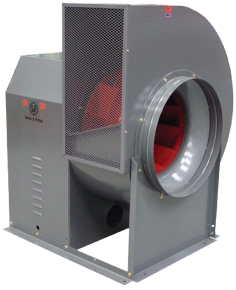
L2E/L2S
Medium Pressure Direct Drive
Exhaust/Supply Fans
Size 24 to 60 | 2,733 to 47,161 CFM



L3E/L3S
High Pressure Direct Drive
Exhaust/Supply Fans
Size 42 to 72 | 21,683 to 85,089 CFM



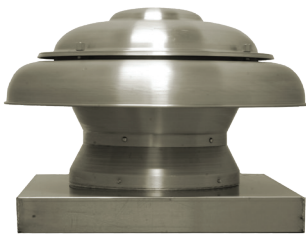
UTILITY EXHAUST/SUPPLY



CM
Belt Drive Utility Vent Set
Sizes 10 to 36 | 499 to 23,958 CFM

PROPELLER ROOF VENTILATORS

DIRECT DRIVE MODELS



ARE/ARS
Dome Axial Power Roof Exhaust/Supply Fans
Size 100A to 201A | 167 to 2,827 CFM



HRED-C
Hooded Exhaust Fans
Size 24 to 60 | 1,193 to 48,780 CFM



HRSD
Hooded Supply Fan
Size 24 to 54 | 2,509 to 50,109 CFM



UBX
Upblast Exhaust Fans
Size 24 to 72 | 5,200 to 65,500 CFM

BELT DRIVE MODELS



UBS/UBS-P
Upblast Exhaust Fans
Size 24 to 60 | 3,732 to 58,500 CFM



HREB-C and HREB-P
Hooded Exhaust Fans
Size 24 to 72 | 1,159 to 93,240 CFM

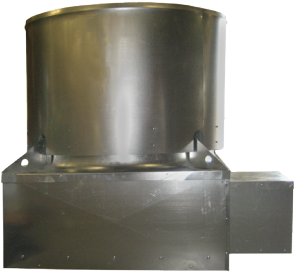


HRSB
Hooded Supply Fans
Size 24 to 60 | 2,979 to 52,534 CFM



UBB
Upblast Exhaust Fans
Size 24 to 72 | 3,254 to 70,800 CFM

REMOTE DRIVE MODELS



UBSRD/UBSRD-HT/UBSRD-HT1 (Exhaust)
Upblast Exhaust Fan for Heat and Smoke Removal
Size 24 to 60 | 4,977 to 50,459 CFM



TUB/TUB-HT/TUB-P (Exhaust)
Tubeaxial Upblast Exhaust Fan
Sizes 24 to 60 | 4,321 to 60,116 CFM

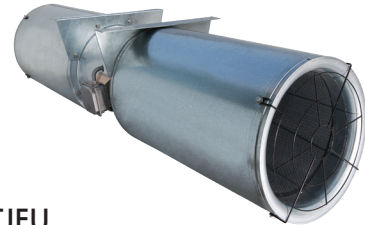
JET FAN SERIES



IFFT/IFFTe
Centrifugal Jet Fan
Size 50N to 100N | 1,754 to 5,498 CFM



IFAB/IFEB
Low Profile Centrifugal Jet Fans
Size 12N | 1,350 to 1,530 CFM



TJFU
Medium Pressure Direct Drive Exhaust/Supply Fans
Size 315 to 400 | 1,560 to 6,474 CFM

HIGH VOLUME LOW SPEED



Tornado
5-Blade HVLS
Size 10 to 24



Tempest
6-Blade HVLS
Size 6 to 16



Competitors Cross Reference Models

Models are for general similarity only. Refer to specifications and construction data for details

S&P MODEL	DESCRIPTION	ACME	CARNES	COOK
SDB	Power Roof Exhauster - Centrifugal - Belt Drive	PV/PNN	VEBK	ACEB
LPD	Power Roof Exhauster - Centrifugal - Direct Drive	PRN	VEDK	ACED
SDBD	Power Roof Exhauster - Centrifugal - Direct Drive	PRN	VEDK	ACED
STXB	Upblast Roof Exhauster - Centrif. - Belt Drive	PNU/PU/PUH	VUBK	ACRUB
STXB (UL-762)	Upblast Restaurant Hood Exhauster - Belt Drive	PNU-RG	VRBK	VCR
STXD	Upblast Roof Exhauster - Centrif. - Direct Drive	PDU	VUDK	ACRUD
CWD	Sidewall Centrifugal Exhaust- Direct Drive	PW	VWDK	ACWD
LOSONE SELECT	Bathroom Fans & Cabinet Fans	V/VQ	VCDD	GEMINI-GC/GN
KSFV	Filtered Fresh Air Supply Roof Fan	AFSI	VSBB	KSPB
ARE/ARS	Dome Axial Power Roof Exhaust/Supply	LQ	LEDA	AQD
GED	Sidewall Propeller Fan - Direct Drive	FQ/FN	LTDK/LZDK	APD/SWD
LCE/LCS	Sidewall Propeller Fan - Belt Drive	DC/DCK	LWBA/LWBK	XLM/SWB
SQB	Inline Duct Fan - Centrifugal - Belt Drive	XB	VIBK	SQN-B/SQI-B
SQD	Inline Duct Fan - Centrifugal - Direct Drive	XD	VIDK	SQN-D/SQI-D
RCXII	Non-powered Roof Vent - Round Dome	LQV	GSAA	PR
CM	Belt Driven Utility Vent Set	QBR	VBRA/VFBA	CPRD/CPFB

GREENHECK	PENN	TWIN CITY	COOLAIR	FANTECH	CAPTIVE AIRE
GB	DXB/KB/JB/MB	BCRD	CRBCA	5BDD	DD-FA
G	DX	CRDD	CRDA	5DDD	DR-HFA
G	DX	CRDD	CRDA	5DDD	DR-HFA
CUBE	FXB/FMX	BCRU	UBCA	5BDU	NCA-FA
CUBE	FXBFT/FMBFT	BCRUR	CUBA	5BDU-762	NCA-HPFA
CUE	FX/FMX	DCRU	UDCA	5DDU	DU-HFA
GW	WX/WA/WB	TCWX	CWDA	5DDW	
SP/CSP	ZEPHYR-Z	T/TL	CF/CFL		CFA-CA
KSU/RSF	MU	BCFS	CSF/SIS	5FSU	A-SERIES
SAIS	DAE		SASD/SAED	5ADE/5ADS	DDAR-FA
SEI/SSI	P	TCPE	CDC		CEPRSM
SBE/S 1&2	BLL/BFM/BBK	WPMB	C-SERIES	1RHR/1RHS	
BSQ	SXB	BST	SQBA		ISQB
SQ	SX	DSI	SQDA		
GRS	DR	GRV	ARVE		
SFD/SFB/SWD	D	BCV			

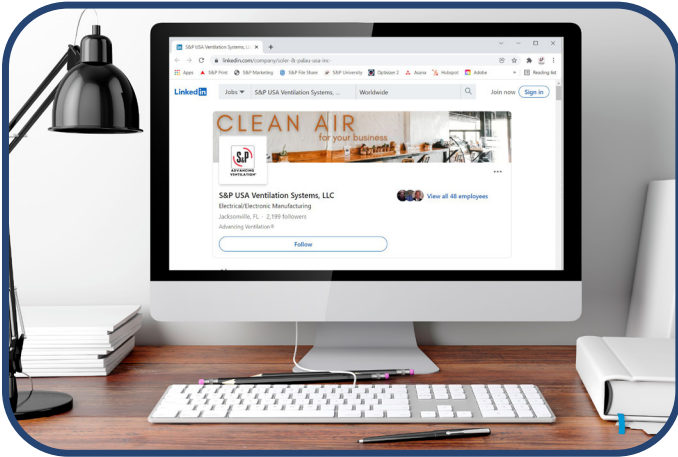
QUICK SELECTION

Model	Mounting Location					Airflow		Application						Motor/Drives			Impeller Type			
	Roof Curb	Floor/Base	Hanging	Wall	Ceiling	Exhaust	Supply	General/Clean Air	Contaminated Air	Spark Resistant	Grease/Restaurant (UL762)	Smoke Control (UL)	High Temp above 200° F	Energy Recovery	Belt	Direct	Ecowatt® (EC Motor Available)	Centrifugal	Propeller	Mixed Flow
Residential/Light Commercial																				
TD		x	x	x	x	x	x	x								x				x
TD-SILENT		x	x	x	x	x	x	x								x				x
PV		x	x	x	x		x									x		x		
reFresh		x	x	x	x		x									x		x		
SWF			x			x	x									x		x		
PC/PCLP/PCV			x		x	x	x									x		x		
PCD					x	x	x									x		x		
LOSONE SELET					x	x	x									x		x		
PRF		x	x	x	x	x	x									x		x		
Recovery Ventilators (ERVs & HRVs)																				
TR		x	x	x	x	x	x	x	x				x			x		x		
TRC		x	x	x	x	x	x	x	x				x			x		x		
TRCe/ TRCeN		x	x	x	x	x	x	x	x				x			x				
Centrifugal Roof and Sidewall Fans																				
LPD	x			x			x		x							x		x		
SDBD/SDBDe	x						x		x							x		x		
SDB	x						x		x									x		
STXB	x			x			x		x									x		
STXB-RHUL	x						x		x									x		
STXB-HT2/STXB-HT	x						x		x									x		
STXD/STXDe	x			x			x		x									x		
STXD-RHUL/STXDe-RHUL	x						x		x									x		
CWD							x		x									x		
Centrifugal Filtered Supply																				
CSF/LSF	x							x										x		
KSFV	x							x										x		

* Models TR, TRC(e) and CRT (ERVs) have a 10-year core warranty and a 5-year warranty on the balance of the TR unit and a 2-year warranty on the balance of the TRC(e) and CRT.

TOOLS AND RESOURCES

S&P USA has created tools to help you understand, find or select the right product and solution for your project.

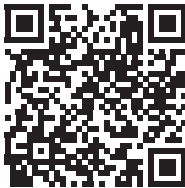


SOCIAL MEDIA

S&P USA is active on Facebook, Instagram, LinkedIn, Twitter, Pinterest & YouTube! Get behind the scenes with our company as well as receive company & product announcements!



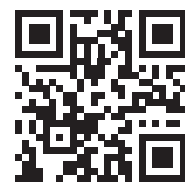
NEW CUSTOMER APPLICATION
APPLY TO BE A NEW CUSTOMER WITH S&P USA



IMPORTANT DATES
HOLIDAY CLOSURES



OPTISIZER 2
FAN SELECTION SOFTWARE



LITERATURE
BROCHURES, SUBMITTALS AND DOCUMENTS



PRODUCT RETURNS
RMA, FREIGHT CLAIM OR WARRANTY



REVIT FILES



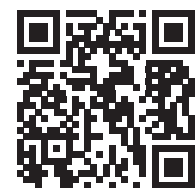
CODE SOLUTIONS
MEET BUILDING CODES WITH S&P USA



PRINT SHOP
ORDER PRINTED LITERATURE



S&P UNIVERSITY
ACCESS CLASSES ABOUT S&P PRODUCTS





**ADVANCING
VENTILATION®**

S&P USA Ventilation Systems, LLC
6393 Powers Avenue
Jacksonville, FL 32217
T. 904-731-4711 • F. 904-737-8322
www.solerpalau-usa.com

S&P Canada Ventilation Products, Inc
6710 Maritz Drive Unit #7
Mississauga, ON L5W 0A1 - Canada
T. 416-744-1217 • F. 416-744-0887
www.solerpalaucanada.com

Soler&Palau 
Ventilation Group 