



ADVANCING  
VENTILATION®



# HOTELS & RESORTS

PRODUCT APPLICATION GUIDE

# HOTELS & RESORTS

Hotels and resorts vary widely in design and construction type, and offer a variety of amenities and services. These include pools, restaurants, gyms, meeting rooms, parking garages, laundry facilities, and the guest rooms themselves.

## WHY IS IT IMPORTANT?

- Resorts are guests home away from home, ventilation helps keep them comfortable and safe.
- Variations in design and function require a diverse line of ventilation products.

# EXAMPLE:



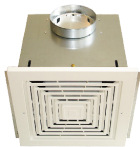
### TD-MIXVENT

In-line Mixed Flow Duct Fan  
APPLICATION: Outside Air Solution



### TD-SILENT

In-line Mixed Flow Duct Fan for Rigid Duct Applications  
APPLICATION: Outside Air Solution



### MODEL FF †

Ceiling Ventilator  
APPLICATION: Guest Restroom & Laundry Room Exhaust  
† FF series is equivalent to the L series



### PC SERIES

Premium CHOICE Series Exhaust Fan  
APPLICATION: Guest Restroom & Laundry Room Exhaust



### MODEL PV-POWERVENT

Dryer Exhaust Duct Power Ventilator  
APPLICATION: Guest Restroom & Laundry Room Exhaust



### MODEL PV-DEDPV

Dryer Exhaust Duct Power Ventilator  
APPLICATION: Laundry Room Exhaust



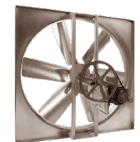
### MODEL TEMPEST/TORNADO

High Volume Low Speed Fans  
APPLICATION: Gym, Dining Space & Porch/Patio Cooling



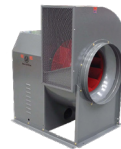
### MODEL LCE

Belt Drive Sidewall Propeller Exhaust Fans  
APPLICATION: Parking Garage Exhaust



### MODEL L2E & L3E

Belt Drive Sidewall Propeller Exhaust Fans  
APPLICATION: Parking Garage Exhaust



### MODEL CM/CM-RHUL

Belt Drive Utility Vent Set  
APPLICATION: Parking Garage Exhaust Stairwell Pressurization & Kitchen Exhaust



### MODEL SQD/eSQD

Direct Drive Square Inline Centrifugal Duct Fans  
APPLICATION: Pool Room & Laundry Room Exhaust



### MODEL SQB \*

Belt Drive Square Inline Centrifugal Duct Fan  
APPLICATION: Pool Room Exhaust



### MODEL SDB

Belt Drive Centrifugal Downblast Roof Exhaust Fans  
APPLICATION: Guest Restroom Single Trunk Exhaust



### MODEL SDBD/SDBDe \*

Direct Drive Centrifugal Downblast Roof Exhaust Fans  
APPLICATION: Guest Restroom Single Trunk Exhaust



### MODEL STXD/STXDe/STXDeRHUL \*

Direct Drive Centrifugal Upblast Roof Exhaust Fans  
APPLICATION: Guest Restroom & Kitchen Exhaust



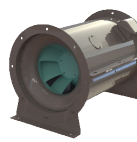
### MODEL STXB/STXB-RHUL \*

Belt Drive Centrifugal Upblast Roof Exhaust Fans  
APPLICATION: Guest Restroom & Kitchen Exhaust



### Models IFFT/IFFTe, IFAB/IFEB & TJFU

Jet Fan Series  
APPLICATION: Parking Garage Induction



### MODEL SMXDK/SMXDKe

Direct Drive Mixed Flow Fan  
APPLICATION: Parking Garage Exhaust

 What is ECOWATT? S&P has developed the Ecowatt® standard to classify energy-efficient products that use Electronically Commutated (EC) or Direct Current (DC) motors. Models that fall under this standard have a certified performance through AMCA (Air Movement & Control Association International, Inc.) or HVI (Home Ventilating Institute). If the product is designed for residential applications the model must be ENERGY STAR® qualified.

\* Miami-Dade certified, TAS201-TAS202-TAS203



**Gym & Dining Hall Cooling**  
Tempest & Tornado



**Guest Restroom Single Trunk Exhaust**  
SDB, SDBD/SDBDe, STXD/STXDe/STXDeRHUL,  
& STXB/STXB-RHUL



**Guest Restroom Exhaust**  
PC Series & Model FF, TD Series & PV-Powervent



**Pool Room Exhaust**  
SQD/eSQD & SQB



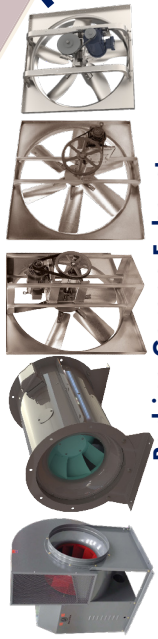
**Laundry Room Exhaust**  
PC, FF, SQD/eSQD,  
PV-DEDPV, PV-Powervent & TD Series



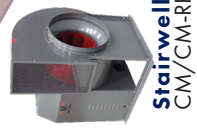
**Kitchen Exhaust**  
STXD/STXDe/STXDeRHUL,  
STXB/STXB-RHUL  
& CM/CM-RHUL



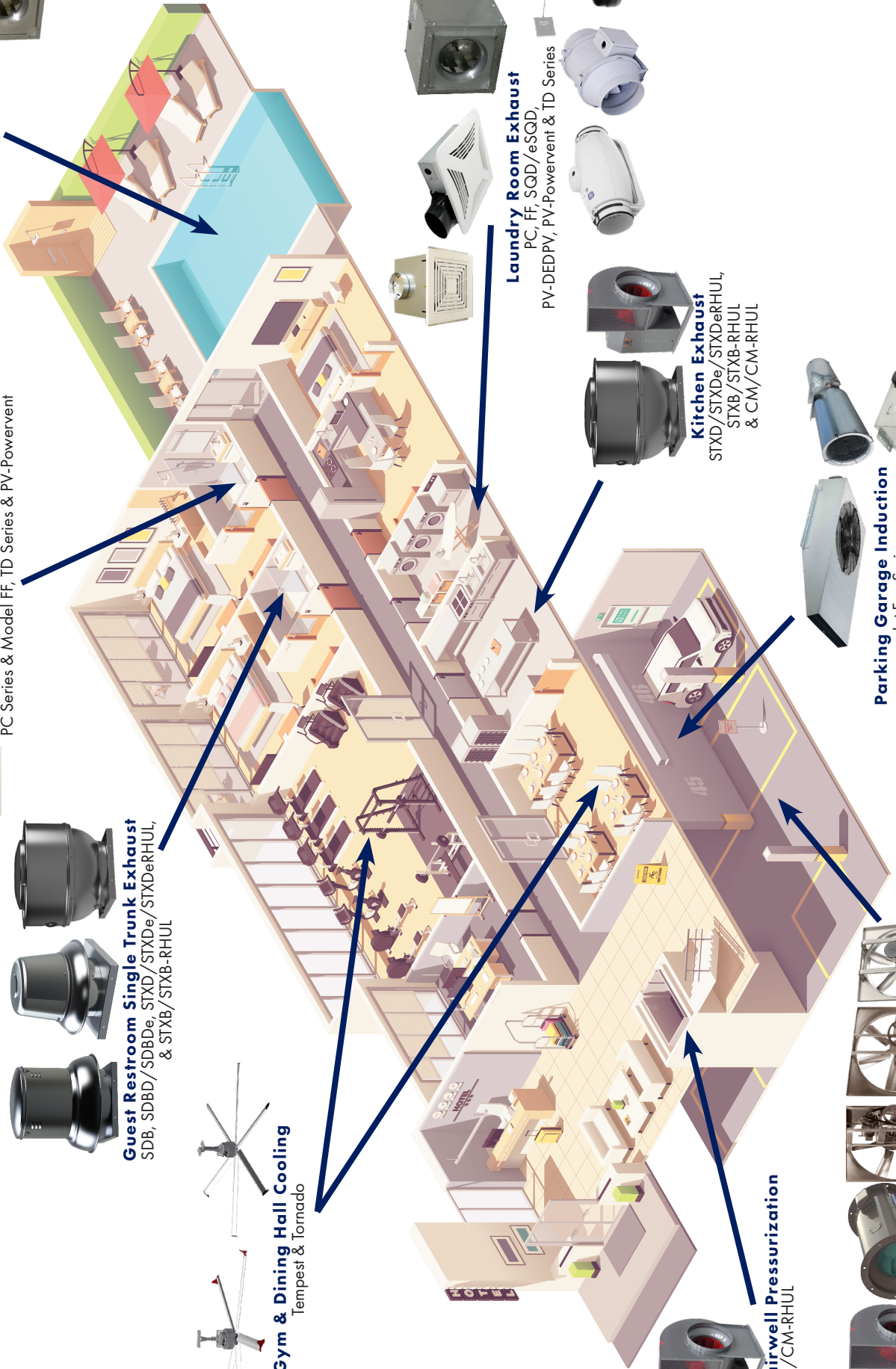
**Parking Garage Induction**  
Jet Fan Series  
IFFT/IFFTe, IFAB/IFEB & TJFU



**Parking Garage Exhaust**  
LC, L2, L3, CM/CM-RHUL & SMXDK/SMXDKe



**Stairwell Pressurization**  
CM/CM-RHUL





**ADVANCING  
VENTILATION®**

**S&P USA Ventilation Systems, LLC**

6393 Powers Avenue

Jacksonville, FL 32217

800.961.7370

[www.SolerPalau-USA.com](http://www.SolerPalau-USA.com)

**Soler&Palau**  **Ventilation Group**

The logo graphic for Soler&Palau features a stylized 'S' and 'P' formed by two overlapping curved segments, one white and one dark blue.