



ADVANCING
VENTILATION®

QUICKSHIP PRODUCTS

Sidewall Duct Fans • Premium CHOICE Bathroom Fans • Energy Recovery Ventilators • Centrifugal Roof & Wall Exhausters • Centrifugal Filtered Supply • Propeller Roof Ventilators • Recovery Ventilators • Ceiling/Cabinet Fans • Gravity Ventilators • Inline Duct Fans • Upblast Restaurant Exhausters



Quick Delivery • Wide Product Selection • Competitive Price

Table of Contents

Ship Programs / Warranty	3
Residential Products	
PV-POWERVENT Series.....	4
SWF-SIDEWALL Series	4
PC - PREMIUM CHOICE BATH FANS	4
TD-MIXVENT and TD-SILENT Series	4
ENERGY RECOVERY VENTILATORS.....	6
General Accessories.....	7
Centrifugal Roof & Wall Exhausters	
Model LPD Low Profile Direct Drive Roof/Sidewall Exhauster	8
Model SDBD Downblast Direct Drive Roof Exhauster	9
Model SDB Downblast Belt Drive Roof Exhauster	10
Model STXD Upblast Direct Drive Roof Exhauster	12
Model STXB-RHUL Upblast Belt Drive (Restaurant Roof Exhauster).....	14
Centrifugal Filtered Supply	
Model KSFV Belt Drive Filtered Roof Supply Fan	16
Centrifugal Inline Fans	
Model SQB Square Inline Belt Drive Duct Fan	19
Model SQD Square Inline Direct Drive Duct Fan	22
Gravity Ventilators	
Model RCXII Gravity Relief/Intake Ventilator	24
Accessories	
Roof Curbs.....	26
Dampers For Roof Ventilators	26
Models Cross Reference	29

Quickship Program

The following shipping standards were established to better serve you on the estimated shipment of S&P products from stock. However, shipping schedules can change at any time due to stock availability and supply chain challenges.

Please note:

- All Quickship product offerings have added charges to cover the program cost.
- Quantities per order are limited. For light commercial products in this brochure, there is a limit of 4 (four) quantities per order. For residential products in this brochure, a product maximum quantity is listed for each.
- Each customer can only order a QS product up to the maximum limit set weekly.
- If a customer PO or order has more than the maximum quantity limit for any product in a given week, S&P USA reserves the right to split an order, and/or assign ship dates the following week.
- Any PO or order that has a QS product combined with a product on standard delivery/shipping will be shipped according to the longest lead time on the PO or order.
- Unless specified, email custserv.jax@solerpalau.com for the maximum quantity for TRs/ERVs.

SHIPPING POINTS

Products ship from Jacksonville, Florida unless noted. Use the chart below to determine shipment schedules:

●	3 Day Shipment From Stock
▲	7 Day Shipment From Stock
◆	14 Day Shipment From Stock

Limited Warranty

S&P USA (Manufacturer) 6393 Powers Avenue, Jacksonville, Florida 32217, warrants equipment of its manufacture to be free from defects in design, materials and workmanship (exclusive of abrasion, corrosion or erosion) as noted in Warranty Chart from the date of shipment to the original purchaser or the date of notification of readiness to ship. Motor warranty is noted in Warranty Chart. In order to claim the benefit of this warranty, buyer must notify manufacturer in writing of the claimed defect within ten (10) days after discovering it and return this equipment or parts to the manufacturer with transportation prepaid. In the event of on-site repair, no service technician will be dispatched until manufacturer receives your written purchase order. If any of the following conditions exist, the warranty will be null and void: **(1)** Buyer has permitted other persons not approved or authorized by manufacturer to alter, adjust, replace or repair the equipment or any part thereof. **(2)** Buyer has not followed instructions or other directions given in the contract documents or our maintenance manual. **(3)** When breakage or other loss or damage is the result of any negligence, misuse or fault on the part of any operator or other person not under our supervision or control. **(4)** The defect is the result of designs or drawings made, furnished or specified by others. **(5)** In the case of goods not manufactured but supplied by the manufacturer as part of a contract, manufacturer shall only be liable to the same extent that our supplier is to manufacturer, not to exceed any liability manufacturer would have for warranty on our own equipment. **(6)** Buyer has not paid in full invoices submitted to the buyer which are due for payment. **(7)** Unusual wear and tear of the equipment.

Statements relating to the product, its use or installation made prior to the execution of the agreement, are not warranties except to the extent that the contrary is expressly set forth herein. It is understood that such statements were not intended to, and did not, form a part of the agreement; they were merely made in the course of negotiations of the parties.

THIS WARRANTY IS IN LIEU OF ANY OTHER EXPRESSED OF IMPLIED WARRANTIES, INCLUDING ANY IMPLIED WARRANTY OF MERCHANTABILITY OR FITNESS FOR ANY PARTICULAR PURPOSE. OUR SOLE AND EXCLUSIVE OBLIGATION UNDER THIS WARRANTY IS TO REPAIR OR REPLACE DEFECTIVE EQUIPMENT OR PARTS OR, AT OUR OPTION, TO PAY THE REASONABLE COST OF REPAIR OR REPLACEMENT. BUYER AGREES THAT NO OTHER REMEDY (INCLUDING, BUT NOT LIMITED TO, INCIDENTAL OR CONSEQUENTIAL DAMAGES, DAMAGE FOR LOST PROFITS OR SALES, OR DAMAGES FOR INJURIES TO PERSON OR PROPERTY) SHALL BE AVAILABLE. NOTWITHSTANDING THE ABOVE, THE TOTAL AMOUNT THAT MAY IN ANY EVENT BE PAYABLE IN SETTLEMENT OR LIABILITY, HOWEVER INCURRED, SHALL NOT EXCEED THE CONTRACT PRICE.

RESIDENTIAL



Powervent Series Inline Centrifugal Duct Fan

Part # Ship Weight(lbs) 9 to 20	Max Qty /Order
PV-100X ●	50
PV-125X ●	10
PV-150X ●	10
PV-200X ●	10
PV-250X ●	10
PV-315X ●	10

Accessories	
Part # Ship Weight(lbs) 1 to 2	Max Qty /Order
SPT-100X ●	50
CS-325 ●	100
LT-100 ●	100

Kits	
Part # Ship Weight(lbs) 9 to 24	Max Qty / Order
KIT-PV100X ●	50
KIT-PV150X ●	10
KIT-PV100X-DV ●	50
KIT-PV150X-DV ●	10
KIT-PV200X-DV ●	10
PV-DEDPV ●	10
PV-100XPS ●	50
DBF-100XC ●	50



SWF Series-SIDEWALL Fans Centrifugal Sidewall Fans

Part # Ship Weight(lbs) 12 to 16	Max Qty / Order
SWF-100 ●	10
SWF-100X ●	10
SWF-150 ●	10
SWF-150X ●	10
SWF-200 ●	10



TD Series-MIXVENT and SILENT Fans Inline Mixed Flow Duct Fan

***TD-355 and TD-400 do not qualify for the Free Freight Allowance (FFA) due to size restrictions. These units ship LTL.**

Part # Ship Weight(lbs) 3 to 78	Max Qty /Order	Kits		Accessories		Bulk		
		Part # Ship Weight(lbs) 4 to 24	Max Qty / Order	Part # Ship Weight(lbs) 1 to 4	Max Qty /Order	Part #	Max Qty /Order	Min Qty /Order
TD-100/X1 ●	100	KIT-TD100 ●	100	MCA-100 ●	25	5211370900 ▲	240	60
TD-125 ●	100	KIT-TD100X1 ●	100	MCA-125 ●	10	5211372100 ▲	160	40
TD-150 ●	100	KIT-TD150 ●	100	MCA-150 ●	25	5211371100 ▲	160	40
TD-200 ●	100	KIT-TD150-DV ●	50	MCA-200 ●	10	5211371200 ▲	128	32
TD-250 ●	10	KIT-TD100X1L ●	10	MCA-250 ●	5	5211371300 ▲	96	24
TD-315 ●	10	KIT-TD100X1H ●	10	MCA-315 ●	5			
TD-355 ●	5	KIT-TD100X1F ●	10					
TD-400 ●	5	KIT-TD150L ●	10					
TD-125XS ●	50	KIT-TD150H ●	10					
TD-150S ●	50							
TD-200S ●	50							



Premium CHOICE Fans PCXP - Premium CHOICE Fan XP Series

Part # Ship Weight(lbs) 8 to 12	Max Qty /Order	Kits		Accessories		Contractor Packs	
		Part # Ship Weight(lbs) 4 to 8	Max Qty /Order	Part # Ship Weight(lbs) 1 to 2	Max Qty /Order	Part # Ship Weight(lbs) 22 to 24	Max Qty /Order
PC50XP ●	200	PCMHRDP ●	100	PCSCP ●	200	PCHP ●	50
PC80XP ●	200	PCVLEKRD ●	100	PCHSP ●	100	PC80XFP ●	25
PC110XP ●	200			PC3S ●	50	PC110XFP ●	25
PC150XP ●	200			PCLDKP ●	100		
				PCMGP ●	50		
				PCVLEDKP ●	100		

PC Replacement Parts	
Part # Ship Weight(lbs) 0.5 to 2	Max Qty /Order
PCGP ●	50
PCMRGP ●	50
PDR6-4 ●	20
PC50G-1 ●	20
PCLPG ●	20
PCLMGP ●	5
PCVGP ●	20
PCLDMGP ●	20



PCV Series Premium CHOICE Value Fan

Part # Ship Weight(lbs) 7	Max Qty / Order	Accessories	
		Part # Ship Weight(lbs) 1	Max Qty /Order
PCV50	200	PCSC	200
PCV80	200	PCHS	200
Contractor Packs			
Part # Ship Weight(lbs) 11 to 17	Max Qty /Order		
PCV50H	25	PC3S	50
PCV50F	25	PCVLEDKP	100
PCV80H	25	Radiation Damper & Kits	
PCV80F	25	Part # Ship Weight(lbs) 4.3	Max Qty /Order
		PCVLEDKRD	100
		PCVRD1	100



PCD Series Premium CHOICE Fan - DC Models

Part # Ship Weight(lbs) 7 to 11	Max Qty /Order	Kits	
		Part # Ship Weight(lbs) 2 to 8	Max Qty /Order
PCD80XHP	200	PCVRD1	100
PCD110XP	200	PCMGKRD	100
PCLPD100XHP	100	PCMRGRDP	100
Accessories			
Part # Ship Weight(lbs) 50 to 100	Max Qty /Order		
PC3S	50	PCVLEDKRD	100
PCELEDKP	100	PCLEDKRDP	100
PCMRGP	100		
PCDLEDMGP	50		



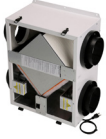
PCLP Series Premium CHOICE Fan - Low Profile Models

Part # Ship Weight(lbs) 7	Max Qty /Order	Accessories	
		Part # Ship Weight(lbs) 0.25 to 2	Max Qty /Order
PCLP80XP	25	PCLPHSP	100
PCLP100XP	25	PCLPSCP	100
PCLPD100XHP	25	PC3S	50
Kits			
Part # Ship Weight(lbs) 9 to 20	Max Qty /Order		
PCVLEDKRD	100	PCLPR4-3	200
		PCSC	200
		PCHS	200
Contractor Packs			
Part # Ship Weight(lbs) 11 to 22	Max Qty /Order		
PCLPHXP	50		
PCLP80XPF	25		
PCLP100XPF	25		

Outside Air Accessories

Part # Ship Weight(lbs) 1 to 9	Max Qty /Order	Part # Ship Weight(lbs) 1 to 5	Max Qty /Order
MD4-ES24VK	100	CAR150	250
MD5-ES24VK	100	CAR175	250
MD6-ES24VK	100	CAR200	250
MD8-ES24VK	50	CAR250	50
MD6	200	CAR315	50
DH6-120V	20	CAR355	25
CAR100	250	CAR400	25
CAR125	250	ES24V	250

*Email custserv.jax@solerpalau.com for max quantity limit per order.



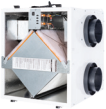
***TR Series - Total Recovery ERVs for All Climates**

TR/ERV products are excluded from the S&P USA Free Freight Allowed (FFA) Program

*Part # Ship Weight(lbs) 36 to 85	Max Qty /Order
TR90	-
TR90G	-
TR130	-
TR200	-
TR300	-

Accessories			
*Part # Ship Weight(lbs) 1 to 2	Max Qty /Order	*Part # Ship Weight(lbs) 1 to 5	Max Qty /Order
SPTL	-	VB-106	-
SPBL	-	VT8	-
SFM	-	FA8-G	-
CAR150	250	FA8-P	-
CAR200	250	VW12x8	-
BD6	-	990076	-
BD8	-	990447	-
VW106	-		

MERV 13 Filters	
*Part # Ship Weight(lbs) 3 to 25	Max Qty /Order
990756	-
990757	-
990759	-
990761	-
990762	-
990764	-
990766	-
990767	-
990769	-



***TRe Series - Total Recovery ERVs for All Climates**

TR/ERV products are excluded from the S&P USA Free Freight Allowed (FFA) Program

*Part # Ship Weight(lbs) 41 to 66	Max Qty /Order
TRe90	-
TRe90H	-
TRe200	-
TRe300	-

Accessories	
Part # Ship Weight(lbs) 1	Max Qty /Order
SPTL	-
SPBL	-
SFM	-
SPBT	-



***TRLPe Series - Total Recovery ERVs for All Climates**

TR/ERV products are excluded from the S&P USA Free Freight Allowed (FFA) Program

*Part # Ship Weight(lbs) 38	Max Qty /Order
TRLPe110	-
TRLPe110H	-

Accessories			
*Part # Ship Weight(lbs) 1 to 2	Max Qty /Order	*Part # Ship Weight(lbs) 1 to 5	Max Qty /Order
SPTL	-	VB-106	-
SPBL	-	VT8	-
SFM	-	FA8-G	-
CAR150	250	FA8-P	-
CAR200	250	VW12x8	-
BD6	-	990076	-
BD8	-	990447	-
VW106	-		

*Email custserv.jax@solerpalau.com for max quantity limit per order.

PRICES ARE SUBJECT TO CHANGE AND PRODUCTS MAY BE DISCONTINUED WITHOUT PRIOR NOTICE.
PLEASE REFERENCE SPECIAL PRICING AND SHIPPING BEFORE SUBMITTING ORDERS. CONTACT SUPPORT SERVICES AT CUSTSERV.JAX@SOLERPALAU.COM

General Accessories



Part # Ship Weight(lbs) 6	Max Qty /Order	Part # Ship Weight(lbs) 1 to 2	Max Qty /Order
VLED-100 ●	10	PG-100 ●	100
VLH-100 ●	10	PG-150 ●	100

Part # Ship Weight(lbs) 1 to 2	Max Qty /Order	Part # Ship Weight(lbs) 1 to 3	Max Qty /Order	Part # Ship Weight(lbs) 1 to 2	Max Qty /Order
BOR-100 ●	10	BOC100 ●	10	GRA-100 ●	10
BOR-125 ●	10	BOC125 ●	10	GRA-125 ●	10
BOR-150 ●	10	BOC150 ●	10	GRA-150 ●	10
BOR-200 ●	10	BOC200 ●	10	GRA-200 ●	10



Part # Ship Weight(lbs) 1 to 5	Max Qty /Order	Part # Ship Weight(lbs) 1 to 5	Max Qty /Order	Part # Ship Weight(lbs) 2 to 3	Max Qty /Order
CAR100 ●	250	PER-100W ●	100	ACOP-V100 ●	50
CAR125 ●	250	PER-150W ●	100	ACOP-V125 ●	10
CAR150 ●	250	PER-200W ●	25	ACOP-V150 ●	10
CAR175 ●	250	PER-250W ●	10	ACOP-V200 ●	10
CAR200 ●	250	PER-355W ●	2	ACOP-V250 ●	10
CAR250 ●	50	PER-450W ●	2	ACOP-V315 ●	10
CAR315 ●	50	PER-500W ●	2		
CAR355 ●	25				
CAR400 ●	25				



Part # Ship Weight(lbs) 22 to 35	Max Qty /Order	Part # Ship Weight(lbs) 4	Max Qty /Order	Part # Ship Weight(lbs) 5 to 8	Max Qty /Order
SIL-200 ●	2	FB4 ●	100	MFL-200 ●	10
SIL-250 ●	2	FB5 ●	100	MFL-250 ●	10
SIL-315 ●	2	FB6 ●	100	MFL-315 ●	5

Part # Ship Weight(lbs) 2 to 9	Max Qty /Order	Part # Ship Weight(lbs) 1 to 2	Max Qty /Order	Part # Ship Weight(lbs) 1 to 2	Max Qty /Order	Part # Ship Weight(lbs) 2 to 9	Max Qty /Order
MD4 ●	200	SR10-8 ●	20	SY-4 ●	5	RC-4 ●	10
MD5 ●	200	SR8-6 ●	20	SY-6 ●	5	RC-6 ●	10
MD6 ●	200	PDR6-4 ●	20	SY-8 ●	5	RC-8 ●	10
MD8 ●	50	SR6-4 ●	20	SY66-8 ●	5	RC-10 ●	10
MD10 ●	5	SR5-4M ●	20	SY88-10 ●	5	FT622 ●	50
MD12 ●	5	SR315-12 ●	20	ES24V ●	250	FT247 ●	50
MD14 ●	5	SHW-20 ●	20				
DH6-120V ●	20						

For more information on our Residential Products



*Email custserv.jax@solerpalau.com for max quantity limit per order.

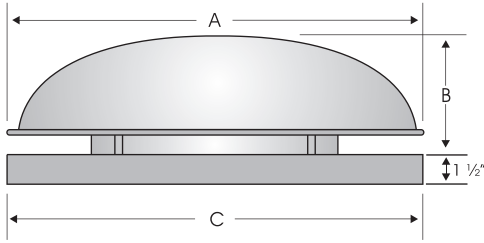
Ship Schedules:	● 3 Day Shipment From Stock	▲ 7 Day Shipment From Stock	◆ 14 Day Shipment
------------------------	-----------------------------	-----------------------------	-------------------

COMMERCIAL

(Each commercial product has a max order quantity of 4 units)

MODEL LPD

Low Profile Direct Drive Centrifugal Roof/Sidewall Exhaust Fans



S&P USA Ventilation Systems, LLC., Div. of Soler & Palau Ventilation Group, certifies that the Models LPD shown herein are licensed to bear the AMCA Seal. The ratings shown are based on test and procedures performed in accordance with AMCA Publication 211 and AMCA Publication 311 and comply with the requirement of the AMCA Certified Ratings Program.



LISTED POWER ROOF VENTILATOR
UL STANDARD 705

DIMENSIONAL DATA

SIZE	A	B	C	DAMPER O.D.	ROOF OPENING	CURB O.D.	AVG SHIP WT
6	16-1/2	7	16-1/2	11	11-3/4	14-3/4	15
8	16-1/2	7	16-1/2	11	11-3/4	14-3/4	19

ALL DIMENSIONS IN INCHES, WEIGHTS IN POUNDS. OD IS OUTSIDE DIMENSION OF SQUARE CURB AND DAMPER.

PERFORMANCE DATA

MODEL LPD	CFM @ Static Pressure											RPM (NOM.)	AMPS @ 60HZ / WATTS*	SONES @ 1/2"	Ventilator with TE motor
	0	1/8	1/4	3/8	1/2	5/8	3/4	1	1-1/4	1-1/2	1-3/4				115/1/60 STOCK NO.
6	302	269	246	222	197	175	155	120	-	-	-	2800	0.8 / 90	7.2	LPD061AS ●
8	387	357	332	303	275	245	222	178	137	100	65	2775	1.0 / 115	11.9	LPD081AS ●

Performance certified is for installation type A-free inlet, free outlet. Performance ratings include the effects of birdscreen in the airstream. The sound ratings shown are loudness values in fan sones @ 5' (1.5m) in a hemispherical free field calculated per AMCA Standard 301. Installation Type A: free inlet hemispherical sone levels.

*Base unit=AMCA Seal for Sound Rating does not apply to units with speed control + RPM range capable with solid state speed control.

Speed (RPM) shown is normal. Performance is based on actual speed of test.

ACCESSORIES

MODEL LPD	12" HIGH ROOF CURB	GRAVITY DAMPER	DAMPER MOTOR (LOOSE)	115 VOLT SPEED CONTROL
	STOCK NO.	STOCK NO.	STOCK NO.	STOCK NO.
6	611214 ●	411011 ●	411611 ●	2727.1 ●
8	611214 ●	411011 ●	411611 ●	2727.1 ●

MODEL SDBD

DOWNBLAST DIRECT DRIVE CENTRIFUGAL ROOF EXHAUSTER



APPLICATION

Model SDBD direct drive units are used to exhaust air from all types of commercial and institutional buildings such as hospitals and health care facilities, schools, recreational buildings, machinery and equipment rooms, offices, retail stores and similar applications.

DIMENSIONAL DATA

SDBD Sizes 6, 7, 8 & 10

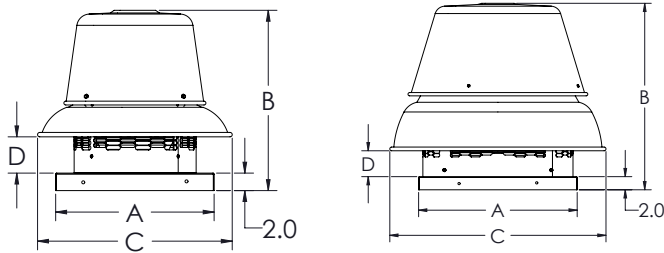
SDBD Sizes 12, 14, 15, 16 & 18



S&P USA Ventilation Systems, LLC., Div. of Soler & Palou Ventilation Group, certifies that the Models SDBD shown herein are licensed to bear the AMCA Seal. The ratings shown are based on test and procedures performed in accordance with AMCA Publication 211 and AMCA Publication 311 and comply with the requirement of the AMCA Certified Ratings Program.



LISTED POWER ROOF VENTILATOR
UL STANDARD 705



Size	A	B	C	D	ROOF OPENING	AVG SHIP WT.
6	18	14-1/8	22-5/16	1-1/2	13-1/2	27
7	18	16-13/16	22-5/16	4-1/8	13-1/2	30
8	18	20-1/2	22-5/16	4-1/8	13-1/2	42
10	18	20-1/2	22-5/16	5-1/8	13-1/2	46
12	20	27-5/16	27-5/8	3-7/8	15-1/2	105
14	20	27-5/16	27-5/8	3-7/8	15-1/2	112
15	24	28	32-7/8	4	19-1/2	136
16	24	28	32-7/8	4	19-1/2	136

MODEL SDBD					Downblast Direct Drive Centrifugal Roof Exhauster										Ventilator with Open Drip-proof Motor		
Model SDBD	Motor HP	Max. BHP	RPM	Sones @ 1/8 SP	CFM at Static Pressure										115/1/60		
					0	1/8	1/4	3/8	1/2	5/8	3/4	7/8	1	1-1/4	Stock No.		
6C	1/10	0.07	1650	7.0	182	153	132	108	72	-	-	-	-	-	-	SDBD06CJH1AS	●
6	1/10	0.04	1650	6.5	351	300	245	190	116	-	-	-	-	-	-	SDBD06JH1AS	●
7	1/10	0.09	1650	7.2	476	429	380	329	266	197	107	-	-	-	-	SDBD07JH1AS	●
8	1/25	0.09	1150	6.5	604	513	420	207	-	-	-	-	-	-	-	SDBD08HM1AS	●
	1/10	0.08	1650	10.3	900	802	732	662	575	484	342	-	-	-	-	SDBD08JH1AS	●
	1/4	0.12	1750	11.3	892	842	788	733	670	597	504	306	-	-	-	SDBD08MH1AS	●
10	1/4	0.12	1150	7.6	948	846	737	606	407	-	-	-	-	-	-	SDBD10MM1AS	●
	1/3	0.25	1700	12.6	1348	1282	1214	1137	1060	978	886	782	651	-	-	SDBD10PH1AS	●
12	1/4	0.25	1150	8.5	1278	1172	1046	904	711	-	-	-	-	-	-	SDBD12MM1AS	▲
	1/2	0.41	1700	15.4	1885	1811	1738	1661	1572	1478	1377	1269	1152	761	-	SDBD12QH1AS	▲
14	1/4	0.41	1100	12.3	2216	2070	1888	1700	1460	1168	-	-	-	-	-	SDBD14MM1AS	▲
15	1/2	0.41	1150	14.8	2683	2557	2404	2252	2074	1884	1653	1288	-	-	-	SDBD15QM1AS	▲
16	1/2	0.5	1150	17.3	3330	3184	3036	2873	2700	2515	2282	2012	1557	-	-	SDBD16QM1AS	▲

Speed (RPM) shown is nominal. Performance is based on actual speed of test.
Performance certified is for installation type A-free inlet, free outlet.
Performance ratings include the effects of birdscreen in the airstream.
The sound ratings shown are the loudness values in the fan sones @ 5' (1.5m) in an hemispherical free field calculated per AMCA Standard 301.
Installation Type A: free inlet hemispherical sone levels.

SDBD ACCESSORIES

MODEL SDBD	RECOMMENDED 12" HIGH MOUNTING CURB		RECOMMENDED GRAVITY DAMPER		DAMPER MOTOR (LOOSE)	115 VOLT SPEED CONTROL	
	OD	STOCK NO.	OD	STOCK NO.		STOCK NO.	STOCK NO.
6	16-1/2	711216 ●	12	411012 ●	411611 ●	2727.1 ●	N/A
7	16-1/2	711216 ●	12	411012 ●	411611 ●	2727.1 ●	N/A
8	16-1/2	711216 ●	12	411012 ●	411611 ●	2727.1 ●	N/A
10	16-1/2	711216 ●	12	411012 ●	411611 ●	2727.1 ●	2828.1 ●
12	18-1/2	711218 ▲	14	411014 ▲	411611 ▲	2727.1 ▲	2828.1 ▲
14	18-1/2	711218 ▲	14	411014 ▲	411611 ▲	2727.1 ▲	N/A
15	22-1/2	711222 ▲	18	411018 ▲	411611 ▲	N/A	2828.1 ▲
16	22-1/2	711222 ▲	18	411018 ▲	411611 ▲	N/A	2828.1 ▲

Ship Schedules: ● 3 Day Shipment From Stock ▲ 7 Day Shipment From Stock ◆ 14 Day Shipment

MODEL SDB

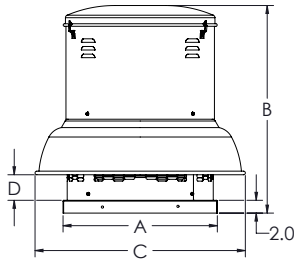
DOWNBLAST BELT DRIVE

CENTRIFUGAL ROOF EXHAUSTER



APPLICATION

Model SDB belt drive units are used for the exhaust of relatively clean air from a wide range of commercial, industrial and institutional environments such as manufacturing and assembly plants, office buildings, schools, hospitals, restaurants, athletic facilities and many others.



DIMENSIONAL DATA

SIZE	A	B	C	D	ROOF OPENING	AVG SHIP WT.
6	18	30-1/8	25	3-3/8	13-1/2	111
7	18	30-1/8	25	3-3/8	13-1/2	111
8	18	30-1/8	25	3-3/8	13-1/2	114
10	18	30-1/8	25	3-3/8	13-1/2	115
12	20	31-11/16	27-5/8	3-7/8	15-1/2	128
14	20	31-11/16	27-5/8	3-7/8	15-1/2	135
15	24	32-1/2	32-7/8	4	19-1/2	151
16	24	32-1/2	32-7/8	4	19-1/2	151
18	30	36-3/8	39-3/16	4-5/8	25-1/2	217
20	30	38-5/16	45	6-1/8	25-1/2	233
22	30	38-5/16	45	6-1/8	25-1/2	233
24	36	46-5/8	49-3/8	6	31-1/2	349

ACCESSORIES

SIZE	RECOMMENDED 12" HIGH MOUNTING CURB		RECOMMENDED GRAVITY DAMPER		DAMPER MOTOR (LOOSE)	AUTOMATIC BELT TENSIONER (INSTALLED)
	OD	STOCK NO.	OD	STOCK NO.	STOCK NO.	STOCK NO.
6	16 1/2	711216 ●	12	411012 ●	411611 ●	100069 ●
7	16 1/2	711216 ●	12	411012 ●	411611 ●	100069 ●
8	16 1/2	711216 ●	12	411012 ●	411611 ●	100069 ●
10	16 1/2	711216 ●	12	411012 ●	411611 ●	100069 ●
12	18 1/2	711218 ●	14	411014 ●	411611 ●	100070 ●
14	18 1/2	711218 ●	14	411014 ●	411611 ●	100070 ●
15	22-1/2	711222 ●	18	411018 ●	411611 ●	100070 ●
16	22-1/2	711222 ●	18	411018 ●	411611 ●	100070 ●
18	28 1/2	711228 ◆	24	411024 ◆	411611 ◆	100072 ◆
20	28 1/2	711228 ◆	24	411024 ◆	411611 ◆	100072 ◆
22	28 1/2	711228 ◆	24	411024 ◆	411611 ◆	100072 ◆
24	34 1/2	711234 ◆	30	411030 ◆	411611 ◆	100072 ◆

Curb Cap adaptors are available to match old style DB and competitors curb caps. Refer to Optisizer2 for sizes available on Quickship.



S&P USA Ventilation Systems, LLC., Div. of Soler & Palau Ventilation Group, certifies that the Models SDB shown herein are licensed to bear the AMCA Seal. The ratings shown are based on test and procedures performed in accordance with AMCA Publication 211 and AMCA Publication 311 and comply with the requirement of the AMCA Certified Ratings Program.



MODEL SDB

Downblast Belt Drive Centrifugal Roof Exhauster

Ventilator with Open Drip-proof Motor and Drive Assembly

Model SDB	Motor HP	Max. BHP	RPM	Sones @ 1/4 SP	CFM at Static Pressure											115/1/60*	208-230-460/3/60
					0	1/8	1/4	3/8	1/2	5/8	3/4	7/8	1	1-1/4	1-1/2	Stock No.	Stock No.
6	1/4	0.11	1600	8.2	300	275	246	215	176	109	-	-	-	-	-	SDB06ML1S ●	-
	1/4	0.15	1800	9.7	337	315	291	265	235	201	146	80	-	-	-	SDB06MM1S ●	-
	1/4	0.21	2000	11.4	375	354	335	310	288	260	229	185	125	-	-	SDB06MH1S ●	-
7	1/4	0.21	1600	8.5	438	388	336	277	205	119	-	-	-	-	-	SDB07ML1S ●	-
	1/4	0.21	1800	10.2	493	449	402	356	300	235	158	-	-	-	-	SDB07MM1S ●	-
	1/4	0.21	2000	11.9	547	507	466	425	381	330	272	202	136	-	-	SDB07MH1S ●	-
8	1/4	0.21	1550	9.1	835	775	716	648	563	410	-	-	-	-	-	SDB08ML1S ●	-
	1/4	0.21	1750	11.1	943	888	838	782	720	644	535	265	-	-	-	SDB08MM1S ●	-
	1/4	0.26	1950	13.2	1051	1001	956	909	857	800	733	651	497	-	-	SDB08MH1S ●	-
	1/3	0.32	2100	15.0	1132	1085	1043	1000	954	905	850	787	712	341	-	SDB08PH1S ●	-
10	1/4	0.32	1450	10.8	1213	1148	1077	997	906	796	646	-	-	-	-	SDB10ML1S ●	-
	1/4	0.28	1600	12.8	1339	1280	1217	1148	1074	988	888	763	489	-	-	SDB10MH1S ●	-
	1/3	0.34	1750	14.8	1464	1411	1355	1294	1229	1158	1079	988	883	-	-	SDB10PH1S ●	-
12	1/4	0.34	1400	11.1	1540	1459	1378	1277	1169	1053	907	644	-	-	-	SDB12MH1S ●	-
	1/3	0.34	1550	13.2	1705	1632	1560	1478	1383	1285	1181	1054	891	-	-	SDB12PH1S ●	-
	1/2	0.48	1750	16.0	1925	1860	1796	1731	1654	1570	1483	1396	1297	1043	-	SDB12QH1S ●	SDB12QH3S ●
14	1/4	0.48	1100	10.0	2216	2081	1946	1787	1602	1322	-	-	-	-	-	SDB14MH1S ●	-
	1/3	0.48	1200	11.8	2417	2293	2172	2038	1878	1702	1424	-	-	-	-	SDB14PH1S ●	-
	1/2	0.55	1400	15.9	2820	2714	2610	2506	2388	2255	2112	1950	1712	-	-	SDB14QH1S ●	SDB14QH3S ●
	3/4	0.75	1550	19.0	3122	3026	2932	2838	2739	2633	2513	2384	2250	1843	-	SDB14RH1S ●	SDB14RH3S ●
	1	1.08	1750	23.0	3525	3440	3355	3273	3189	3102	3009	2908	2798	2565	2248	SDB14SH1S ●	SDB14SH3S ●
15	1/4	1.08	1000	10.0	2327	2197	2037	1870	1685	1385	-	-	-	-	-	SDB15MH1S ●	-
	1/3	1.08	1100	11.7	2560	2445	2301	2156	1996	1823	1544	-	-	-	-	SDB15PH1S ●	-
	1/2	1.08	1250	14.4	2909	2810	2692	2562	2434	2292	2145	1962	1655	-	-	SDB15QH1S ●	SDB15QH3S ●
	3/4	0.79	1450	18.8	3375	3291	3197	3091	2976	2866	2749	2624	2498	2150	1082	SDB15RH1S ●	SDB15RH3S ●
	1	1.07	1600	22.0	3724	3648	3566	3473	3371	3271	3172	3067	2956	2725	2410	SDB15SH1S ●	SDB15SH3S ●
16	1/4	1.07	900	9.1	2566	2403	2219	2015	1737	1210	-	-	-	-	-	SDB16MH1S ●	-
	1/3	1.07	1000	11.1	2851	2707	2544	2373	2174	1912	1501	-	-	-	-	SDB16PH1S ●	-
	1/2	1.07	1150	14.0	3279	3155	3019	2874	2724	2556	2345	2094	1681	-	-	SDB16QH1S ●	SDB16QH3S ●
	3/4	1.07	1300	17.6	3707	3598	3482	3356	3228	3094	2954	2783	2583	2024	-	SDB16RH1S ●	SDB16RH3S ●
	1	1.08	1450	22.0	4135	4038	3936	3827	3713	3597	3478	3356	3216	2872	2410	SDB16SH1S ●	SDB16SH3S ●
18	1/3	1.08	750	8.4	2993	2770	2542	2311	1936	-	-	-	-	-	-	SDB18PH1S ◆	-
	1/2	1.08	900	12.0	3592	3402	3223	3027	2840	2594	2228	-	-	-	-	SDB18QH1S ◆	SDB18QH3S ◆
	3/4	1.08	1000	14.9	3991	3819	3658	3489	3312	3142	2927	2621	2269	-	-	SDB18RH1S ◆	SDB18RH3S ◆
	1	1.1	1150	18.9	4590	4440	4296	4156	4008	3852	3705	3551	3352	2786	-	SDB18SH1S ◆	SDB18SH3S ◆
	1-1/2	1.59	1300	22.9	5188	5055	4925	4802	4678	4546	4408	4275	4145	3832	3360	SDB18TH1S ◆	SDB18TH3S ◆
	2	2.2	1450	27.0	5787	5667	5550	5437	5326	5215	5097	4974	4850	4618	4347	SDB18VH1S ◆	SDB18VH3S ◆
20	1/3	2.2	650	7.1	3255	2971	2685	2372	-	-	-	-	-	-	-	SDB20PH1S ◆	-
	1/2	2.2	800	10.9	4006	3780	3544	3313	3056	2791	-	-	-	-	-	SDB20QH1S ◆	SDB20QH3S ◆
	3/4	2.2	900	13.4	4506	4307	4097	3893	3681	3452	3228	-	-	-	-	SDB20RH1S ◆	SDB20RH3S ◆
	1	2.2	1000	15.7	5007	4829	4642	4452	4271	4077	3869	3670	3436	-	-	SDB20SH1S ◆	SDB20SH3S ◆
	1-1/2	2.2	1150	19.6	5758	5604	5445	5279	5115	4958	4796	4619	4438	4083	-	SDB20TH1S ◆	SDB20TH3S ◆
	2	2.11	1250	22.4	6259	6117	5972	5821	5668	5520	5376	5230	5065	4738	4403	SDB20VH1S ◆	SDB20VH3S ◆
	2	2.11	1250	22.4	6259	6117	5972	5821	5668	5520	5376	5230	5065	4738	4403	SDB20VH1S ◆	SDB20VH3S ◆
22	1/3	2.11	550	8.8	4454	3975	3399	-	-	-	-	-	-	-	-	SDB22PH1S ◆	-
	1/2	2.11	650	11.6	5264	4862	4409	3899	2995	-	-	-	-	-	-	SDB22QH1S ◆	SDB22QH3S ◆
	3/4	2.11	700	13.3	5669	5295	4894	4443	3884	-	-	-	-	-	-	SDB22RH1S ◆	SDB22RH3S ◆
	1	2.11	800	16.5	6478	6150	5822	5439	5043	4566	3779	-	-	-	-	SDB22SH1S ◆	SDB22SH3S ◆
	1-1/2	2.11	900	20.1	7288	6996	6708	6397	6048	5697	5290	4773	-	-	-	SDB22TH1S ◆	SDB22TH3S ◆
	2	2.11	1000	24.1	8098	7835	7575	7312	7017	6701	6387	6036	5624	-	-	SDB22VH1S ◆	SDB22VH3S ◆
24	1/3	2.11	450	5.8	4643	4010	3263	-	-	-	-	-	-	-	-	SDB24PH1S ◆	-
	1/2	2.11	550	9.3	5675	5151	4622	3978	-	-	-	-	-	-	-	SDB24QH1S ◆	SDB24QH3S ◆
	3/4	2.11	650	13.9	6707	6253	5830	5358	4819	4088	-	-	-	-	-	SDB24RH1S ◆	SDB24RH3S ◆
	1	2.11	700	15.9	7223	6796	6407	5991	5518	4976	4233	-	-	-	-	-	SDB24SH3S ◆
	1-1/2	2.11	800	19.4	8255	7875	7531	7186	6815	6401	5960	5410	4705	-	-	-	SDB24TH3S ◆
	2	2.23	900	23.2	9287	8946	8633	8332	8020	7689	7326	6945	6526	5385	-	-	SDB24VH3S ◆

Power ratings (BHP) do not include transmission losses.
 Performance certified is for installation type A-free inlet, free outlet. Performance ratings include the effects of birdscreen in the airstream.
 The sound ratings shown are loudness values in fan sones @ 5' (1.5m) in a hemispherical free field calculated per AMCA Standard 301.
 Installation Type A: free inlet hemispherical sone levels. *Tri-voltage (115-208-230) is standard on 3/4 through 1-1/2 HP Single phase motors. Tri-voltage is available for the 1/2 HP motors. Inquire for price and delivery.

Ship Schedules:	● 3 Day Shipment From Stock	▲ 7 Day Shipment From Stock	◆ 14 Day Shipment
------------------------	-----------------------------	-----------------------------	-------------------

MODEL STXD & STXD-RHUL

UPBLAST DIRECT DRIVE CENTRIFUGAL ROOF/SIDEWALL EXHAUSTER FOR GENERAL AND RESTAURANT APPLICATIONS



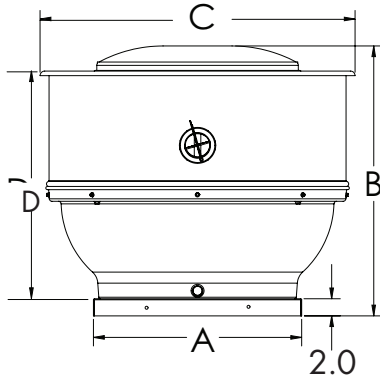
LISTED POWER ROOF VENTILATOR
UL STANDARD 705
(sizes 6-8)
UL STANDARD 762
(sizes 10-16)

APPLICATION

Isolation of the motor from the air stream and the high velocity vertical (roof) or horizontal (wall) air discharge make the Model STXD-RHUL ideally suited for the removal of dirty, contaminated and/or high temperature air from processes and buildings. Typical applications include restaurant hoods and similar kitchen exhaust ventilation, fume and smoke removal, laboratory fume hood exhaust and chemical process exhaust.



S&P USA Ventilation Systems, LLC., Div. of Soler & Palau Ventilation Group, certifies that the Models STXD shown herein are licensed to bear the AMCA Seal. The ratings shown are based on test and procedures performed in accordance with AMCA Publication 211 and AMCA Publication 311 and comply with the requirement of the AMCA Certified Ratings Program.



DIMENSIONAL DATA

SIZE	A	B	C	D	ROOF OPENING	AVG SHIP WT
6	18	25-5/16	28-5/8	20-5/16	13-1/2	89
7	18	25-5/16	28-5/8	20-5/16	13-1/2	89
8	18	25-5/16	28-5/8	20-5/16	13-1/2	98
10	18	25-5/16	28-5/8	20-5/16	13-1/2	101
12	20	26-15/16	31-5/16	21-15/16	15-1/2	111
14	20	26-15/16	31-5/16	21-15/16	15-1/2	118
15	24	27-5/8	36-1/2	22-5/8	19-1/2	140
16	24	27-5/8	36-1/2	22-5/8	19-1/2	141

MODEL STXD		Upblast Direct Drive Centrifugal Roof/Side wall Exhauster												Ventilator with Open Drip-proof Motor		
Model STXD	Motor HP	Max. BHP	RPM	Sones @ 1/8 SP	CFM at Static Pressure										115/1/60	
					0	1/8	1/4	3/8	1/2	5/8	3/4	7/8	1	Stock No.		
6	1/10	0.05	1650	7.1	225	208	192	172	149	116	59	-	-	-	STXD06CJH1AS	●
	1/10	0.05	1650	7.2	308	285	259	231	194	134	-	-	-	STXD06JH1AS	●	
7	1/10	0.04	1650	7.1	437	394	345	287	223	146	-	-	-	STXD07JH1AS	●	
8	1/25	0.04	1150	6.0	612	531	427	-	-	-	-	-	-	STXD08HM1AS	●	
	1/4	0.14	1750	10.9	935	881	832	773	712	636	534	312	-	STXD08MH1AS	●	
10	1/4	0.14	1150	7.7	979	886	777	656	457	-	-	-	-	STXD10RHULMM1AS	●	
	1/3	0.28	1700	13.8	1445	1385	1320	1248	1175	1100	1015	923	808	STXD10RHULPH1AS	●	
12	1/4	0.28	1150	8.5	1284	1155	1030	883	702	-	-	-	-	STXD12RHULMM1AS	●	
	1/2	0.40	1700	15.3	1918	1831	1751	1666	1574	1485	1387	1281	1168	STXD12RHULQH1AS	●	
14	1/4	0.40	1100	12.4	2148	1997	1831	1651	1410	1085	-	-	-	STXD14RHULMM1AS	●	
15	1/2	0.40	1150	14.0	2643	2501	2382	2215	2048	1887	1670	1344	-	STXD15RHULQM1AS	●	
16	1/2	0.49	1150	14.4	3187	3044	2904	2750	2576	2383	2153	1865	1382	STXD16RHULQM1AS	●	

Speed (RPM) shown is nominal. Performance is based on actual speed of test.
Performance certified is for installation type A-free inlet, free outlet.
Performance ratings do not include the effects of birdscreen in the airstream.

The sound ratings shown are the loudness values in the fan sones @ 5' (1.5m) in an hemispherical free field calculated per AMCA Standard 301.
Installation Type A: free inlet hemispherical sone levels.

STXD & STXD-RHUL ACCESSORIES

MODEL STXD	12" HIGH MOUNTING CURB		GRAVITY DAMPER		DAMPER MOTOR (LOOSE)	115 VOLT SPEED CONTROL
	OD	STOCK NO.	OD	STOCK NO.	STOCK NO.	STOCK NO.
6	16-1/2	711216 ●	12	411012 ●	411611 ●	2727.1 ●
7	16-1/2	711216 ●	12	411012 ●	411611 ●	2727.1 ●
8	16-1/2	711216 ●	12	411012 ●	411611 ●	2727.1 ●

Sizes 6-8 are not suitable for Restaurant applications

Curb Cap adaptors are available to match old style TXD and competitors curb caps. Refer to Optisizer2 for sizes available on Quickship.

MODEL STXD/ STXDRHUL	CURB CAP ADAPTOR (replace TXD with STXD using existing curb)	WALL MOUNT ADAPTOR	BIRDSCREEN* (Ships loose)	GREASE GRABBER (roof mounting only)	GREASE GRABBER (sidewall mounting only)
	STOCK NO.	STOCK NO.	STOCK NO.	STOCK NO.	STOCK NO.
6	CCA1816 ●	400555 ●	400248 ●	-	-
7	CCA1816 ●	400555 ●	400248 ●	-	-
8	CCA1816 ●	400555 ●	400248 ●	-	-
10	CCA1816 ●	400555 ●	400248 ●	708971 ●	708971W ●
12	CCA2024 ●	400557 ●	400249 ●	708971 ●	708971W ●
14	N/A	400557 ●	400249 ●	708971 ●	708971W ●
15	N/A	400559 ●	400250 ●	708971 ●	708971W ●
16	N/A	400559 ●	400250 ●	708971 ●	708971W ●

*You can not use a damper or birdscreen in a grease application

MODEL STXD- RHUL	12" HIGH MOUNTING CURB		18" OR 24" HIGH MOUNTING CURB		GRAVITY DAMPER*		115 VOLT SPEED CONTROL		HINGED BASE KIT	METAL GREASE BOX	
	OD	STOCK NO.	STOCK NO.		OD	STOCK NO.	STOCK NO.	STOCK NO.	STOCK NO.	STOCK NO.	
10	16-1/2	711216 ●	722416V (24") ●		12	411012 ●	411611 ●	2727.1 ●	N/A	400252 ●	90005891-A ●
12	18-1/2	711218 ●	722418V (24") ●		14	411014 ●	411611 ●	2727.1 ●	2828.1 ●	400252 ●	90005891-A ●
14	18-1/2	711218 ●	722418V (24") ●		14	411014 ●	411611 ●	2727.1 ●	N/A	400252 ●	90005891-A ●
15	22-1/2	711222 ●	721822V (18") ●		18	411018 ●	411611 ●	N/A	2828.1 ●	400252 ●	90005891-A ●
16	22-1/4	711222 ●	721822V (18") ●		18	411018 ●	411611 ●	N/A	2828.1 ●	400252 ●	90005891-A ●

*You can not use a damper or birdscreen in a grease application

MODEL STXB-RHUL

UPBLAST BELT DRIVE CENTRIFUGAL ROOF/ SIDEWALL EXHAUSTER

FOR RESTAURANT AND GENERAL EXHAUST



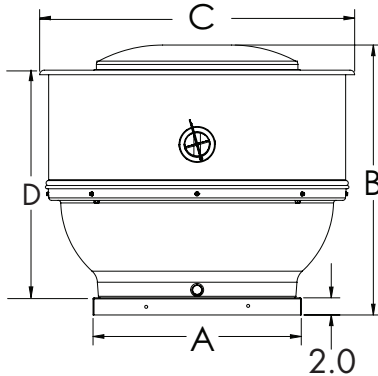
APPLICATION

Isolation of motor and drive components from the air stream and the high velocity vertical air discharge make the model STXB-RHUL ideally suited for the removal of dirty, contaminated and/or high temperature air from processes and buildings. Typical applications include restaurant hoods and similar kitchen exhaust ventilation, fume and smoke removal, laboratory fume hood exhaust and chemical process exhaust.



S&P USA Ventilation Systems, LLC, Div. of Soler & Palau Ventilation Group, certifies that the Models STXB shown herein are licensed to bear the AMCA Seal. The ratings shown are based on test and procedures performed in accordance with AMCA Publication 211 and AMCA Publication 311 and comply with the requirement of the AMCA Certified Ratings Program.

DIMENSIONAL DATA



SIZE	A	B	C	D	ROOF OPENING	AVG SHIP WT
8	18	29-5/16	28-5/8	24-5/16	13-1/2	123
10	18	29-5/16	28-5/8	24-5/16	13-1/2	123
12	20	30-7/8	31-5/16	25-15/16	15-1/2	137
14	20	30-7/8	31-5/16	25-15/16	15-1/2	144
15	24	31-1/2	36-1/2	26-5/8	19-1/2	159
16	24	31-1/2	36-1/2	26-5/8	19-1/2	166
18	30	35-3/4	42-5/8	30-1/2	25-1/2	230
20	30	38-5/8	46-7/16	30-1/2	25-1/2	233
22	30	38-5/8	46-7/16	33-5/16	25-1/2	233
24	36	49-1/8	50-1/2	37-1/2	31-1/2	385

ACCESSORIES

MODEL STXB-RHUL	12" HIGH MOUNTING CURB (1)		18" HIGH MOUNTING CURB	DAMPER (2)		DAMPER MOTOR (LOOSE)	AUTOMATIC BELT TENSIONER (INSTALLED)	HINGED BASE KIT	METAL GREASE BOX
	OD	STOCK NO.	STOCK NO.	OD	STOCK NO.	STOCK NO.	STOCK NO.	STOCK NO.	STOCK NO.
8	16-1/2	711216 ●	721816V ●	12	411012 ●	411611 ●	100069 ●	400252 ●	90005891-A ●
10	16-1/2	711216 ●	721816V ●	12	411012 ●	411611 ●	100069 ●	400252 ●	90005891-A ●
12	18-1/2	711218 ●	721818V ●	14	411014 ●	411611 ●	100070 ●	400252 ●	90005891-A ●
14	18-1/2	711218 ●	721818V ●	14	411014 ●	411611 ●	100070 ●	400252 ●	90005891-A ●
15	22-1/2	711222 ●	721822V ●	18	411018 ●	411611 ●	100070 ●	400252 ●	90005891-A ●
16	22-1/2	711222 ●	721822V ●	18	411018 ●	411611 ●	100070 ●	400252 ●	90005891-A ●
18	28-1/2	711228 ◆	721828V ◆	24	411024 ◆	411611 ◆	100072 ◆	400252 ◆	90005891-B ◆
20	28-1/2	711228 ◆	721828V ◆	24	411024 ◆	411611 ◆	100072 ◆	400252 ◆	90005891-B ◆
22	28-1/2	711228 ◆	721828V ◆	24	411024 ◆	411611 ◆	100072 ◆	400252 ◆	90005891-B ◆
24	34-1/2	711234 ◆	721834V ◆	30	411030 ◆	411611 ◆	100072 ◆	400252 ◆	90005891-A ◆

- 1 - RESTAURANT CURBS MUST BE 18" HIGH MINIMUM PER NFPA-96.
2 - DO NOT USE DAMPER FOR FANS IN GREASE REMOVAL APPLICATIONS PER NFPA 96.

MODEL STXB	CURB CAP ADAPTOR (replace TXB with STXB using existing curb)	WALL MOUNT ADAPTOR	BIRDSCREEN (3) (Ships loose)	GREASE GRABBER	GREASE GRABBER FOR WALL
	STOCK NO.	STOCK NO.	STOCK NO.	STOCK NO.	STOCK NO.
8	CCA1816 ●	400555 ●	400248 ●	708971 ●	708971W ●
10	CCA1816 ●	400555 ●	400248 ●	708971 ●	708971W ●
12	CCA2024 ●	400557 ●	400249 ●	708971 ●	708971W ●
14	N/A	400557 ●	400249 ●	708971 ●	708971W ●
15	N/A	400559 ●	400250 ●	708971 ●	708971W ●
16	N/A	400559 ●	400250 ●	708971 ●	708971W ●
18	N/A	N/A	400276 ●	708971 ●	708971W ●
20	N/A	N/A	400277 ◆	708971 ◆	708971W ◆
22	N/A	N/A	400277 ◆	708971 ◆	708971W ◆
24	N/A	N/A	400278 ◆	708971 ◆	708971W ◆

Curb Cap adaptors are available to match old style TXB and competitors curb caps. Refer to Optisizer2 for sizes available on Quickship.

3 - DO NOT USE FOR UL762 APPLICATIONS

MODEL STXB-RHUL

Upblast Belt Drive Centrifugal Restaurant Roof Exhauster

Ventilator with Open Drip-proof Motor and Drive Assembly

Model STXB	Motor HP	Max. BHP	RPM	Sones @ 1/4 SP	CFM at Static Pressure						115/1/60*		208-230/460/3/60	
					0	1/4	1/2	3/4	1	1-1/4	Stock No.	Stock No.		
8	1/4	0.13	1550	9.0	833	714	560	-	-	-	STXB08RHULML1S	●	-	
	1/4	0.19	1750	11.5	940	838	720	539	-	-	STXB08RHULMM1S	●	-	
	1/4	0.26	1950	13.5	1047	955	855	732	525	-	STXB08RHULMH1S	●	-	
	1/3	0.33	2100	15.0	1128	1041	951	850	703	-	STXB08RHULPH1S	●	-	
10	1/4	0.26	1600	12.9	1342	1198	1045	864	480	-	STXB10RHULMH1S	●	-	
	1/3	0.37	1800	15.4	1510	1384	1252	1106	931	573	STXB10RHULPH1S	●	-	
12	1/4	0.37	1450	11.8	1602	1417	1213	957	-	-	STXB12RHULMH1S	●	-	
	1/3	0.35	1600	13.8	1768	1599	1432	1221	949	-	STXB12RHULPH1S	●	-	
	1/2	0.5	1800	16.5	1989	1840	1697	1520	1331	1086	STXB12RHULQH1S	●	STXB12RHULQH3S ●	
14	1/4	0.5	1050	9.0	2122	1847	1468	-	-	-	STXB14RHULMH1S	●	-	
	1/3	0.5	1200	11.9	2425	2191	1895	1495	-	-	STXB14RHULPH1S	●	-	
	1/2	0.51	1350	15.0	2728	2525	2289	1987	1532	-	STXB14RHULQH1S	●	STXB14RHULQH3S ●	
	3/4	0.78	1550	19.1	3132	2960	2763	2538	2268	1936	STXB14RHULRH1S	●	STXB14RHULRH3S ●	
	1	1.03	1700	22.0	3435	3280	3105	2917	2689	2439	STXB14RHULSH1S	●	STXB14RHULSH3S ●	
15	1/4	1.03	1000	8.6	2302	1998	1627	-	-	-	STXB15RHULMH1S	●	-	
	1/3	1.03	1100	10.2	2533	2260	1953	1498	-	-	STXB15RHULPH1S	●	-	
	1/2	1.03	1250	13.3	2878	2645	2383	2080	1627	-	STXB15RHULQH1S	●	STXB15RHULQH3S ●	
	3/4	0.78	1450	17.8	3338	3143	2921	2692	2424	2072	STXB15RHULRH1S	●	STXB15RHULRH3S ●	
	1	1.04	1600	21.0	3684	3510	3311	3107	2895	2638	STXB15RHULSH1S	●	STXB15RHULSH3S ●	
16	1/4	1.04	900	9.3	2555	2201	1736	-	-	-	STXB16RHULMH1S	●	-	
	1/3	1.04	1000	10.9	2839	2524	2152	1526	-	-	STXB16RHULPH1S	●	-	
	1/2	1.04	1150	14.0	3265	2994	2699	2335	1718	-	STXB16RHULQH1S	●	STXB16RHULQH3S ●	
	3/4	0.79	1300	17.8	3691	3453	3202	2919	2577	2048	STXB16RHULRH1S	●	STXB16RHULRH3S ●	
	1	0.99	1400	21.0	3975	3755	3524	3276	2988	2639	STXB16RHULSH1S	●	STXB16RHULSH3S ●	
18	1/3	0.99	800	9.9	3194	2769	2270	-	-	-	STXB18RHULPH1S	●	-	
	1/2	0.99	900	12.4	3593	3213	2815	2200	-	-	STXB18RHULQH1S	●	STXB18RHULQH3S ●	
	3/4	0.82	1050	16.2	4192	3869	3545	3175	2624	1668	STXB18RHULRH1S	●	STXB18RHULRH3S ●	
	1	1.09	1150	18.5	4591	4292	3999	3690	3321	2744	STXB18RHULSH1S	●	STXB18RHULSH3S ●	
	1-1/2	1.57	1300	22.2	5190	4925	4663	4406	4120	3794	STXB18RHULTH1S	●	STXB18RHULTH3S ●	
	2	2.12	1450	26.7	5788	5552	5315	5084	4851	4589	STXB18RHULVH1S	●	STXB18RHULVH3S ●	
20	1/3	2.12	650	7.3	3276	2697	1800	-	-	-	STXB20RHULPH1S	◆	-	
	1/2	2.12	800	11.5	4032	3580	3064	2262	-	-	STXB20RHULQH1S	◆	STXB20RHULQH3S ◆	
	3/4	2.12	900	14.1	4536	4133	3698	3171	-	-	STXB20RHULRH1S	◆	STXB20RHULRH3S ◆	
	1	2.12	1000	16.4	5040	4675	4297	3889	3358	-	STXB20RHULSH1S	◆	STXB20RHULSH3S ◆	
	1-1/2	1.59	1150	20.1	5796	5474	5165	4817	4459	4003	STXB20RHULTH1S	◆	STXB20RHULTH3S ◆	
	2	2.22	1300	24.7	6552	6265	5993	5704	5394	5081	STXB20RHULVH1S	◆	STXB20RHULVH3S ◆	
22	1/3	2.22	550	7.6	4517	3408	-	-	-	-	STXB22RHULPH1S	◆	-	
	1/2	2.22	650	10.3	5338	4434	-	-	-	-	STXB22RHULQH1S	◆	STXB22RHULQH3S ◆	
	3/4	2.22	750	13.5	6160	5400	4502	-	-	-	STXB22RHULRH1S	◆	STXB22RHULRH3S ◆	
	1	2.22	800	15.3	6570	5867	5063	-	-	-	STXB22RHULSH1S	◆	STXB22RHULSH3S ◆	
	1-1/2	2.22	950	20.9	7802	7214	6572	5874	-	-	STXB22RHULTH1S	◆	STXB22RHULTH3S ◆	
	2	2.27	1050	24.8	8624	8091	7536	6927	6242	-	STXB22RHULVH1S	◆	STXB22RHULVH3S ◆	
24	1/3	2.27	450	6.4	4368	3068	-	-	-	-	STXB24RHULPH1S	◆	-	
	1/2	2.27	550	10.2	5339	4386	-	-	-	-	STXB24RHULQH1S	◆	STXB24RHULQH3S ◆	
	3/4	2.27	650	15.0	6309	5555	4535	-	-	-	STXB24RHULRH1S	◆	STXB24RHULRH3S ◆	
	1	2.27	700	17.3	6795	6108	5217	4078	-	-	STXB24RHULSH1S	◆	STXB24RHULSH3S ◆	
	1-1/2	2.22	800	21.0	7765	7171	6471	5610	4540	-	-	STXB24RHULTH3S	◆	STXB24RHULTH3S ◆
	2	2.14	900	24.8	8736	8207	7639	6941	6136	5192	-	-	STXB24RHULVH3S	◆

Power ratings (BHP) do not include transmission losses.

Performance certified is for installation type A-free inlet, free outlet. Performance ratings do not include the effects of birdscreen in the airstream.

The sound ratings shown are loudness values in fan sones @ 5' (1.5m) in a hemispherical free field calculated per AMCA Standard 301.

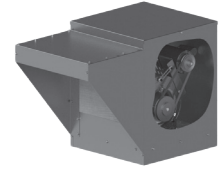
Installation Type A: free inlet hemispherical sones levels.

*Tri-voltage (115-208-230) is standard on 3/4 through 1-1/2 HP Single phase motors. Tri-voltage is available for the 1/2 HP motors. Inquire for price and delivery.

Ship Schedules: ● 3 Day Shipment From Stock ▲ 7 Day Shipment From Stock ◆ 14 Day Shipment

MODEL KSFV

BELT DRIVE CENTRIFUGAL KITCHEN SUPPLY FAN



APPLICATION

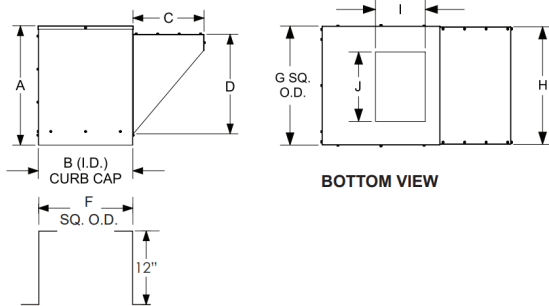
Models KSFV fans are primarily used for filtered make-up air in kitchen hood applications but may also be specified for make-up air in commercial and industrial applications such as manufacturing and assembly areas.



S&P USA Ventilation Systems, LLC., Div. of Soler & Palau Ventilation Group, certifies that the Models KSFV shown herein are licensed to bear the AMCA Seal. The ratings shown are based on test and procedures performed in accordance with AMCA Publication 211 and AMCA Publication 311 and comply with the requirement of the AMCA Certified Ratings Program.



LISTED POWER
ROOF VENTILATOR
UL STANDARD 705



DIMENSIONAL DATA

SIZE	A	B	C	D	F	G	H	I	J	DAMPER O.D.	FILTERS (QTY)	AVG SHIP WT
9	30	23-7/8	18	25-1/8	22-1/2	24	24	10-3/8	12	18-1/2	20 X 20 (1)	152
10	35	33-7/8	18	30-1/8	32-1/2	34	34	11-5/8	13-1/4	28-1/2	16 X 25 (2)	217
12	35	33-7/8	18	30-1/8	32-1/2	34	34	13-5/8	15-3/4	28-1/2	16 X 25 (2)	235
15	35	33-7/8	18	30-1/8	32-1/2	34	34	16-1/8	18-7/8	28-1/2	16 X 25 (2)	282
18	43-1/8	41-7/8	18	30-1/8	40-1/2	42	42	19-1/8	22-1/8	36-1/2	20 X 25 (2)	331

ACCESSORIES

Size	RECOMMENDED 12" HIGH MOUNTING CURB		RECOMMENDED GRAVITY DAMPER		DAMPER MOTOR (LOOSE)
	OD	STOCK NO.	OD	STOCK NO.	STOCK NO.
9	22-1/2	711222 ▲	16	S3GA16CB ▲	MP2781 ▲
10	32-1/2	711232 ▲	20	S3GA26CB ▲	MP2781 ▲
12	32-1/2	711232 ▲	24	S3GA26CB ▲	MP2781 ▲
15	32-1/2	711232 ▲	24	S3GA26CB ▲	MP2781 ▲
18	40-1/2	711240 ▲	27	S3GA34CB ▲	MP2781 ▲

MODEL KSFV *Belt-Drive Centrifugal Kitchen Supply Fan*

Model KSFV	Motor HP	Max BHP	STOCK NO.	STOCK NO.	CFM	Outlet Velocity	Sones @ 1/4 SP	RPM at Static Pressure												
			Single Phase 115	Three Phase 208/230/460				1/8	1/4	3/8	1/2	5/8	3/4	1	1-1/4	1-1/2	2			
9	1/4	0.29	KSFV09ML1S ▲ (450-600) KSFV09MM1S ▲ (601-850) KSFV09MH1S ▲ (851-1025)	-	475	534	-	467	-	-	-	-	-	-	-	-	-	-		
					575	646	-	503	-	-	-	-	-	-	-	-	-	-	-	
					675	758	16.5	541	661	-	-	-	-	-	-	-	-	-	-	-
					775	871	19.3	578	697	-	-	-	-	-	-	-	-	-	-	-
					875	983	22.2	622	735	827	-	-	-	-	-	-	-	-	-	-
					975	1096	23.9	671	773	864	942	-	-	-	-	-	-	-	-	-
					1075	1208	26.1	719	809	901	978	1048	-	-	-	-	-	-	-	-
					1175	1320	29.1	763	850	939	1016	1084	1147	-	-	-	-	-	-	-
	1275	1433	32.5	808	898	975	1053	1121	1183	-	-	-	-	-	-	-				
	1/3	0.38	KSFV09PH1S ▲	-	1375	1545	36.1	858	947	1014	1091	1158	1220	1331	-	-	-			
					1475	1657	39.8	910	997	1059	1127	1196	1257	1367	1467	-	-			
	1/2	0.58	KSFV09QH1S ▲	KSFV09QH3S ▲	1575	1770	43.3	963	1041	1107	1166	1233	1295	1404	1501	1593	-			
1675					1882	46.8	1016	1084	1156	1209	1270	1333	1441	1537	-	-				
3/4	0.86	KSFV09RH1S ▲	KSFV09RH3S ▲	1975	2219	62.2	1178	1229	1295	1355	1401	1447	-	-	-					
1	1.15	KSFV09SH1S ▲	KSFV09SH3S ▲	2075	2331	70.6	1232	1281	1338	1404	-	-	-	-	-					
				2175	2444	80.3	1287	1334	1384	-	-	-	-	-	-					
				2275	2556	91.2	1341	-	-	-	-	-	-	-	-					
10	1/4	0.29	KSFV10ML1S ▲ (400-500) KSFV10MH1S ▲ (501-675)	-	950	896	5.9	409	524	629	-	-	-	-	-	-				
					1090	1028	7.0	435	540	636	726	-	-	-	-					
					1230	1160	8.4	463	561	649	733	813	-	-	-					
					1370	1292	10.3	494	583	667	743	819	891	-	-					
					1510	1425	12.7	527	609	687	760	829	898	-	-					
	1650	1557	14.3	560	636	710	780	845	908	1031	-	-								
	1/3	0.38	KSFV10PH1S ▲	-	1790	1689	15.9	594	666	734	801	864	923	1039	1151	-				
	1/2	0.58	KSFV10QL1S ▲ (575-750) KSFV10QH1S ▲ (751-875)	KSFV10QL3S ▲ (751-875) KSFV10QH3S ▲ (751-875)	1930	1821	17.7	629	697	761	824	884	942	1051	1158	1260	-			
					2070	1953	19.7	665	729	789	849	906	962	1066	1167	1266	-			
					2210	2085	21.6	700	763	819	875	930	984	1085	1180	1274	1454			
	3/4	0.86	KSFV10RL1S ▲ (625-850) KSFV10RH1S ▲ (851-1000)	KSFV10RL3S ▲ (625-850) KSFV10RH3S ▲ (851-1000)	2350	2217	23.6	737	796	851	903	955	1007	1105	1197	1285	1459			
					2490	2349	25.6	774	830	883	933	982	1031	1126	1215	1301	1467			
1	1.15	KSFV10SL1S ▲ (725-950) KSFV10SH1S ▲ (951-1100)	KSFV10SL3S ▲ (725-950) KSFV10SH3S ▲ (951-1100)	2630	2481	27.6	811	865	916	963	1010	1057	1148	1236	1318	1477				
				2770	2613	29.7	849	900	949	995	1040	1084	1172	1257	1337	-				
1-1/2	1.73	KSFV10TL1S ▲ (800-970) KSFV10TM1S ▲ (971-1175) KSFV10TH1S ▲ (1176-1225)	KSFV10TL3S ▲ (800-970) KSFV10TM3S ▲ (971-1175) KSFV10TH3S ▲ (1176-1225)	2910	2745	31.7	887	936	983	1028	1070	1113	1197	1279	1358	-				
				3050	2877	33.8	926	971	1017	1061	1102	1142	1223	1302	1379	-				
				3190	3009	36.1	964	1007	1052	1094	1134	1173	1250	1327	-	-				
2	2.30	KSFV10VH1S ▲	KSFV10VH3S ▲	3330	3142	38.5	1003	1044	1087	1128	1167	1204	1279	-	-	-				
				3470	3274	41.0	1042	1081	1122	1162	1200	1237	-	-	-					
				3610	3406	43.6	1081	1118	1157	-	-	-	-	-	-					
				3750	3538	-	1120	-	-	-	-	-	-	-	-					
12	1/4	0.29	KSFV12ML1S ▲ (350-450) KSFV12MH1S ▲ (451-600)	-	1,150	737	-	367	-	-	-	-	-	-	-	-				
					1,310	840	-	382	-	-	-	-	-	-	-					
					1,470	942	10.0	400	501	-	-	-	-	-	-					
					1,630	1,045	11.6	422	520	-	-	-	-	-	-					
					1,790	1,147	12.9	446	534	613	-	-	-	-	-					
	1,950	1,250	14.2	472	550	632	-	-	-	-	-									
	1/3	0.38	KSFV12PH1S ▲	-	2,110	1,353	15.5	498	569	647	713	-	-	-	-					
	1/2	0.58	KSFV12QL1S ▲ (475-600) KSFV12QH1S ▲ (601-725)	KSFV12QL3S ▲ (475-600) KSFV12QH3S ▲ (601-725)	2,270	1,455	17.0	525	591	661	731	-	-	-	-					
					2,430	1,558	18.7	552	615	678	746	805	-	-	-					
					2,590	1,660	20.4	580	641	698	760	823	873	-	-					
	3/4	0.86	KSFV12RL1S ▲ (500-650) KSFV12RH1S ▲ (651-800)	KSFV12RL3S ▲ (500-650) KSFV12RH3S ▲ (651-800)	2,750	1,763	22.3	609	667	720	777	837	892	-	-					
					2,910	1,865	24.1	638	693	743	796	852	908	-	-					
3,070					1,968	25.9	667	719	768	816	868	922	1018	-						
1	1.15	KSFV12SL1S ▲ (575-750) KSFV12SH1S ▲ (751-875)	KSFV12SL3S ▲ (575-750) KSFV12SH3S ▲ (751-875)	3,230	2,071	27.7	697	746	794	839	887	937	1037	-						
				3,390	2,173	29.5	727	773	820	863	907	954	1051	-						
1-1/2	1.73	KSFV12TL1S ▲ (650-775) KSFV12TM1S ▲ (776-950) KSFV12TH1S ▲ (951-1000)	KSFV12TL3S ▲ (650-775) KSFV12TM3S ▲ (776-950) KSFV12TH3S ▲ (951-1000)	3,550	2,276	31.5	757	801	846	888	929	973	1065	-						
				3,710	2,378	33.5	788	829	872	914	953	993	1080	-						
				3,870	2,481	35.8	818	858	899	940	977	1015	1096	-						
2	2.30	KSFV12VL1S ▲ (807-1025) KSFV12VH1S ▲ (1026-1125)	KSFV12VL3S ▲ (807-1025) KSFV12VH3S ▲ (1026-1125)	4,030	2,583	38.0	849	887	926	966	1003	1039	-	-						
				4,190	2,686	40.3	880	916	954	992	1028	-	-	-						
				4,350	2,788	-	910	945	981	1018	-	-	-	-						

MODEL KSFV *Belt-Drive Centrifugal Kitchen Supply Fan*

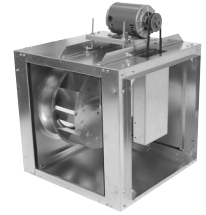
Model KSFV	Motor HP	Max. BHP	STOCK NO.	STOCK NO.	CFM	Outlet Velocity	Sones @ 1/4 SP	RPM at Static Pressure										
			Single Phase 115	Three Phase 208/230/460				1/8	1/4	3/8	1/2	5/8	3/4	1	1-1/4	1-1/2	2	
15	3/4	0.86	KSFV15RL1S ▲ (375-500)	KSFV15RL3S ▲ (375-500)	3130	1519	17.1	448	500	549	593	636	680	-	-	-	-	
			KSFV15RH1S ▲ (501-625)	KSFV15RH3S ▲ (501-625)	3345	1624	18.7	473	520	568	612	651	691	-	-	-	-	
					3560	1728	20.4	497	541	587	630	668	705	782	-	-	-	
	1	1.15	KSFV15SL1S ▲ (425-550)	KSFV15SL3S ▲ (425-550)	3775	1833	22.3	522	563	607	648	687	722	793	-	-	-	
			KSFV15SM1S ▲ (551-650)	KSFV15SM3S ▲ (551-650)	3990	1937	24.2	547	586	627	667	705	740	806	875	-	-	
	1-1/2	1.73	KSFV15TL1S ▲ (561-700)	KSFV15TL3S ▲ (561-700)	4205	2041	26.2	572	610	647	687	723	758	822	886	-	-	
			KSFV15TH1S ▲ (701-800)	KSFV15TH3S ▲ (701-800)	4420	2146	28.0	598	633	669	706	742	776	839	-	-	-	
	2	2.30	KSFV15TL1S ▲ (561-700)	KSFV15TL3S ▲ (561-700)	4635	2250	29.9	623	658	691	726	762	795	-	-	-	-	
			KSFV15TH1S ▲ (701-800)	KSFV15TH3S ▲ (701-800)	4850	2354	31.9	649	682	714	747	781	-	-	-	-	-	
					5065	2459	34.0	675	707	737	-	-	-	-	-	-	-	
	18	3/4	0.86	KSFV18RH1S ▲	KSFV18RH3S ▲	3650	1772	17.3	373	421	456	495	534	571	-	-	-	-
						3940	1913	19.1	395	440	477	510	547	583	649	-	-	-
1		1.15	KSFV18SL1S ▲ (401-500)	KSFV18SL3S ▲ (401-500)	4230	2053	20.8	419	459	498	528	560	595	660	721	-	-	
			KSFV18SH1S ▲ (501-550)	KSFV18SH3S ▲ (501-550)	4520	2194	22.6	443	479	518	549	576	608	672	730	-	-	
1-1/2		1.73	KSFV18TL1S ▲ (476-550)	KSFV18TL3S ▲ (476-550)	4810	2335	24.7	467	501	538	570	596	623	684	741	795	-	
			KSFV18TH1S ▲ (551-625)	KSFV18TH3S ▲ (551-625)	5100	2476	26.7	492	522	557	591	617	641	697	753	805	-	
2		2.30	KSFV18VL1S ▲ (450-550)	KSFV18VL3S ▲ (450-550)	5390	2617	29.1	516	545	577	610	638	662	711	766	817	-	
			KSFV18VM1S ▲ (551-625)	KSFV18VM3S ▲ (551-625)	5680	2757	31.5	541	568	598	629	659	683	727	778	-	-	
3		3.45	N/A	KSFV18WL3S ▲ (500-600)	5970	2898	33.9	566	591	619	649	678	704	746	-	-	-	
				KSFV18WM3S ▲ (601-675)	6260	3039	36.7	591	615	641	669	698	724	-	-	-	-	
				KSFV18WH3S ▲ (676-800)	6550	3180	39.7	616	640	663	689	-	-	-	-	-	-	

Power ratings (BHP) do not include transmission losses.
 Performance certified is for installation type B-free inlet, ducted outlet.
 Performance ratings do not include the effects of appurtenances (accessories).

Table shows fan RPM needed for required CFM and SP.
 Shaded/Non-shaded area shows motor HP and stock number to order.

MODEL SQB

SQUARE INLINE BELT DRIVE CENTRIFUGAL DUCT FAN



APPLICATION

Model SQB square inline duct mounted fans are available in sizes 7 through 24, moving from 100 to over 9,300 CFM, with static pressure capabilities to 1-1/2". SQB units are the perfect selection for clean air applications where space is a leading consideration. The compact housing with removable access doors and side discharge capability can be mounted in any orientation. AMCA licensed performance and UL listing assure that you've made a reliable selection.

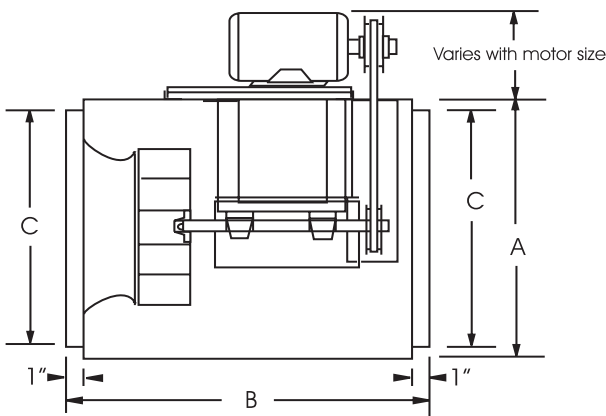


S&P USA Ventilation Systems, LLC, Div. of Soler & Palau Ventilation Group, certifies that the Models SQB shown herein are licensed to bear the AMCA Seal. The ratings shown are based on test and procedures performed in accordance with AMCA Publication 211 and AMCA Publication 311 and comply with the requirement of the AMCA Certified Ratings Program.



LISTED POWER
ROOF VENTILATOR
UL STANDARD 705

DIMENSIONAL DATA



SIZE	A	B	C	AVG SHIP WT
7	15	23	11-7/8	75
8	15	23	11-7/8	75
10	17	23	13-7/8	85
12	21	23	17-7/8	95
15	24	30	21-7/8	140
18	28	30	23-7/8	190
20	32	34	27-7/8	220
24	39	38	34-7/8	320

ACCESSORIES

MODEL SQB	GRAVITY DAMPER		DAMPER MOTOR (LOOSE)	MOTOR SAFETY GUARD	VIBRATION ISOLATORS HANGING STYLE		VIBRATION ISOLATORS FLOOR MOUNT	
	OD	STOCK NO.	STOCK NO.	STOCK NO.	RUBBER STOCK NO.	SPRING STOCK NO.	RUBBER STOCK NO.	SPRING STOCK NO.
7	12	411012 ●	411611 ●	MGSQB78 ●	VHRSQ06-15 ●	VHSSQ06-20 ●	VFRSQ06-15 ●	VFSSQ06-20 ●
8	12	411012 ●	411611 ●	MGSQB78 ●	VHRSQ06-15 ●	VHSSQ06-20 ●	VFRSQ06-15 ●	VFSSQ06-20 ●
10	14	411014 ●	411611 ●	MGSQB1012 ●	VHRSQ06-15 ●	VHSSQ06-20 ●	VFRSQ06-15 ●	VFSSQ06-20 ●
12	19	411018 ●	411611 ●	MGSQB1012 ●	VHRSQ06-15 ●	VHSSQ06-20 ●	VFRSQ06-15 ●	VFSSQ06-20 ●
15	22	411022 ●	411611 ●	MGSQB15 ●	VHRSQ06-15 ●	VHSSQ06-20 ●	VFRSQ06-15 ●	VFSSQ06-20 ●
18	24	411024 ●	411611 ●	MGSQB18 ●	VHRSQ18-20 ●	VHSSQ06-20 ●	VFRSQ18-20 ●	VFSSQ06-20 ●
20	28	411028 ●	411611 ●	MGSQB2024 ●	VHRSQ18-20 ●	VHSSQ06-20 ●	VFRSQ18-20 ●	VFSSQ06-20 ●
24	35	611035 ●	411611 ●	MGSQB2024 ●	VHRSQ24-30 ●	VHSSQ24 ●	VFRSQ24-30 ●	VFSSQ24-30 ●

MODEL SQB		Square Inline Belt Drive Centrifugal Duct Fan											Ventilator with Open Drip-proof Motor and Drive Assembly		
MODEL SQB	MOTOR HP	MAX BHP	RPM	Sones @ 1/2 SP	CFM @ Static Pressure								115/1/60*	208-230/460/3/60	
					1/8	1/4	3/8	1/2	3/4	1	1-1/4	1-1/2	STOCK NO.	STOCK NO.	
7	1/4	0.06	1210	-	184	140	86	-	-	-	-	-	-	SQB07ML1S ●	-
		0.13	1530	9.1	244	219	183	140	-	-	-	-	-	-	-
		0.11	1450	8.4	229	198	162	116	-	-	-	-	-	SQB07MH1S ●	-
	1/3	0.26	1930	14.3	320	302	282	249	189	123	-	-	-	-	-
		0.25	1690	10.8	274	256	220	192	114	-	-	-	-	SQB07PH1S ●	-
		0.34	2110	17.3	355	335	322	295	246	182	114	-	-	-	
8	1/4	0.34	1050	-	454	348	-	-	-	-	-	-	-	SQB08ML1S ●	-
		0.34	1575	10.7	756	698	628	557	-	-	-	-	-	-	-
		0.34	1425	9.3	673	605	525	442	-	-	-	-	-	SQB08MH1S ●	-
	1/3	0.34	1800	13.8	879	831	775	713	589	-	-	-	-	-	-
		0.34	1500	9.9	715	652	577	504	-	-	-	-	-	SQB08PH1S ●	-
	1/2	0.37	2025	17.4	1000	958	912	861	749	634	-	-	-	-	-
0.37		1850	14.6	906	859	807	747	626	-	-	-	-	SQB08QH1S ●	SQB08QH3S ●	
10	1/4	0.56	1050	-	799	684	543	-	-	-	-	-	-	SQB10MH1S ●	-
		0.56	1500	10.0	1227	1145	1066	984	789	-	-	-	-	-	-
	1/3	0.56	1175	6.6	921	819	706	570	-	-	-	-	-	SQB10PH1S ●	-
		0.56	1650	11.9	1363	1291	1218	1146	984	787	-	-	-	-	-
	1/2	0.56	1450	9.4	1181	1096	1015	927	716	-	-	-	-	SQB10QH1S ●	SQB10QH3S ●
		0.52	1900	16.0	1587	1530	1464	1401	1275	1130	967	-	-	-	-
	3/4	0.52	1700	12.7	1408	1340	1268	1198	1045	865	-	-	-	SQB10RH1S ●	SQB10RH3S ●
0.78		2175	21.0	1831	1784	1730	1672	1564	1451	1325	1189	-	-	-	
12	1/4	0.78	900	-	1292	1102	748	-	-	-	-	-	-	SQB12MH1S ●	-
		0.78	1170	9.3	1774	1634	1492	1320	-	-	-	-	-	-	-
	1/3	0.78	1025	6.9	1518	1356	1172	787	-	-	-	-	-	SQB12PH1S ●	-
		0.78	1275	11.3	1956	1831	1699	1564	1067	-	-	-	-	-	-
	1/2	0.78	1120	8.4	1687	1538	1388	1183	-	-	-	-	-	SQB12QH1S ●	SQB12QH3S ●
		0.78	1475	15.1	2298	2193	2081	1967	1720	1246	-	-	-	-	-
	3/4	0.78	1325	12.3	2042	1923	1795	1670	1290	-	-	-	-	SQB12RH1S ●	SQB12RH3S ●
		0.78	1675	18.4	2635	2544	2450	2349	2151	1917	1514	-	-	-	-
	1	0.78	1525	15.9	2382	2281	2174	2063	1835	1470	-	-	-	SQB12SH1S ●	SQB12SH3S ●
1.05		1850	22.0	2928	2847	2763	2676	2492	2312	2087	1729	-	-	-	

Performance certified is for installation Type B-free inlet, ducted outlet.

Power ratings (BHP) do not include transmission losses.

Performance ratings do not include the effects of appurtenances (accessories).

The sound ratings shown are loudness values in fan sones at 5 feet (1.5m) in a hemispherical free field calculated per AMCA Standard 301. Installation Type A: free inlet hemispherical sone levels.

*Tri-voltage (115-208-230) is standard on 3/4 through 1-1/2 HP Single phase motors. Tri-voltage is available for the 1/2 HP motors. Inquire for price and delivery.

MODEL SQB

Square Inline Belt Drive Centrifugal Duct Fan

Ventilator with Open Drip-proof Motor and Drive Assembly

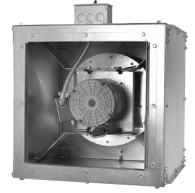
MODEL SQB	MOTOR HP	MAX BHP	RPM	Sones @ 1/2 SP	CFM @ Static Pressure								115/1/60*	208-230/460/3/60	
					1/8	1/4	3/8	1/2	3/4	1	1-1/4	1-1/2	STOCK NO.	STOCK NO.	
15	1/4	1.05	770	-	1607	1414	1133	-	-	-	-	-	-	SQB15MH1S ●	-
		1.05	950	7.7	2070	1909	1752	1544	-	-	-	-	-		
	1/3	1.05	825	-	1749	1570	1345	-	-	-	-	-	-	SQB15PH1S ●	-
		1.05	1060	10.2	2348	2197	2060	1911	1464	-	-	-	-		
	1/2	1.05	990	8.6	2172	2015	1866	1683	-	-	-	-	-	SQB15QH1S ●	SQB15QH3S ●
		1.05	1205	13.5	2712	2572	2447	2327	2036	1576	-	-	-		
	3/4	1.05	1105	11.1	2461	2314	2181	2046	1671	-	-	-	-	SQB15RH1S ●	SQB15RH3S ●
		0.99	1375	17.2	3129	3007	2890	2783	2568	2293	1922	-	-		
	1	0.99	1160	12.4	2598	2456	2328	2202	1878	-	-	-	-	SQB15SH1S ●	SQB15SH3S ●
		1.07	1530	21.0	3507	3399	3290	3188	2997	2798	2539	2221	-		
	1-1/2	1.06	1445	18.8	3300	3185	3071	2966	2765	2531	2230	-	-	SQB15TH1S ●	SQB15TH3S ●
		1.56	1735	26.0	4004	3909	3813	3717	3542	3375	3200	2984	-		
18	1/3	1.56	700	5.9	2401	2150	1886	1454	-	-	-	-	-	SQB18PH1S ●	-
		1.56	800	7.6	2807	2601	2360	2135	-	-	-	-	-		
	1/2	1.56	700	5.9	2401	2150	1886	1454	-	-	-	-	-	SQB18QH1S ●	SQB18QH3S ●
		1.56	925	10.2	3307	3128	2945	2731	2309	-	-	-	-		
	3/4	1.56	750	6.7	2605	2381	2127	1853	-	-	-	-	-	SQB18RH1S ●	SQB18RH3S ●
		1.56	1025	12.6	3703	3539	3379	3204	2839	2378	-	-	-		
	1	1.56	850	8.5	3008	2814	2599	2381	1657	-	-	-	-	SQB18SH1S ●	SQB18SH3S ●
		1.56	1150	15.9	4196	4045	3902	3758	3427	3115	2689	-	-		
	1-1/2	1.56	975	11.3	3505	3335	3164	2970	2590	-	-	-	-	SQB18TH1S ●	SQB18TH3S ●
		1.55	1300	20.0	4784	4644	4516	4390	4128	3824	3553	3215	-		
	2	1.55	1100	14.6	3999	3844	3695	3541	3192	2851	2194	-	-	SQB18VH1S ●	SQB18VH3S ●
		2.03	1425	23.0	5272	5140	5020	4905	4673	4417	4143	3896	-		
20	1/3	2.03	575	-	3301	2933	2401	-	-	-	-	-	-	SQB20PH1S ●	-
		2.03	610	5.6	3543	3207	2727	2126	-	-	-	-	-		
	1/2	2.03	575	-	3301	2933	2401	-	-	-	-	-	-	SQB20QH1S ●	SQB20QH3S ●
		2.03	700	8.3	4155	3870	3559	3109	-	-	-	-	-		
	3/4	2.03	600	6.3	3475	3130	2637	1841	-	-	-	-	-	SQB20RH1S ●	SQB20RH3S ●
		2.03	800	11.6	4823	4577	4324	4042	3268	-	-	-	-		
	1	2.03	650	6.7	3817	3507	3130	2636	-	-	-	-	-	SQB20SH1S ●	SQB20SH3S ●
		2.03	885	14.5	5383	5164	4938	4704	4087	3338	-	-	-		
	1-1/2	2.03	835	12.9	5054	4820	4579	4321	3601	-	-	-	-	SQB20TH1S ●	SQB20TH3S ●
		2.03	1010	19.0	6200	6011	5816	5617	5193	4597	3986	-	-		
	2	2.03	860	13.7	5219	4993	4760	4514	3832	2957	-	-	-	SQB20VH1S ●	SQB20VH3S ●
		2.08	1110	23.0	6849	6679	6503	6324	5957	5540	4945	4402	-		
24	1/2	2.08	530	5.5	4474	3912	3418	2540	-	-	-	-	-	SQB24QH1S ●	SQB24QH3S ●
		2.08	580	7.1	4974	4465	4018	3485	-	-	-	-	-		
	3/4	2.08	530	5.5	4474	3912	3418	2540	-	-	-	-	-	SQB24RH1S ●	SQB24RH3S ●
		2.08	660	9.9	5758	5391	4912	4528	3405	-	-	-	-		
	1	2.08	570	6.8	4875	4354	3903	3324	-	-	-	-	-	SQB24SH1S ●	SQB24SH3S ●
		2.08	725	12.6	6389	6079	5637	5261	4491	-	-	-	-		
	1-1/2	2.08	660	9.9	5758	5391	4912	4528	3405	-	-	-	-	SQB24TH1S ●	SQB24TH3S ●
		2.07	830	17.2	7397	7131	6842	6425	5794	5084	-	-	-		
	2	2.07	675	10.5	5904	5557	5077	4700	3689	-	-	-	-	SQB24VH1S ●	SQB24VH3S ●
		2.08	910	21.0	8159	7916	7669	7359	6688	6131	5398	-	-		
	3	2.02	900	20.0	8064	7819	7567	7245	6577	6012	5236	-	-	N/A	SQB24WH3S ●
		3.08	1035	26.0	9342	9129	8916	8695	8086	7554	7060	6491	-		

Performance certified is for installation Type B-free inlet, ducted outlet.
 Power ratings (BHP) do not include transmission losses.
 Performance ratings do not include the effects of appurtenances (accessories).

The sound ratings shown are loudness values in fan sones at 5 feet (1.5m) in a hemispherical free field calculated per AMCA Standard 301. Installation Type A: free inlet hemispherical sone levels.

MODEL SQD

SQUARE INLINE DIRECT DRIVE CENTRIFUGAL DUCT FAN



APPLICATION

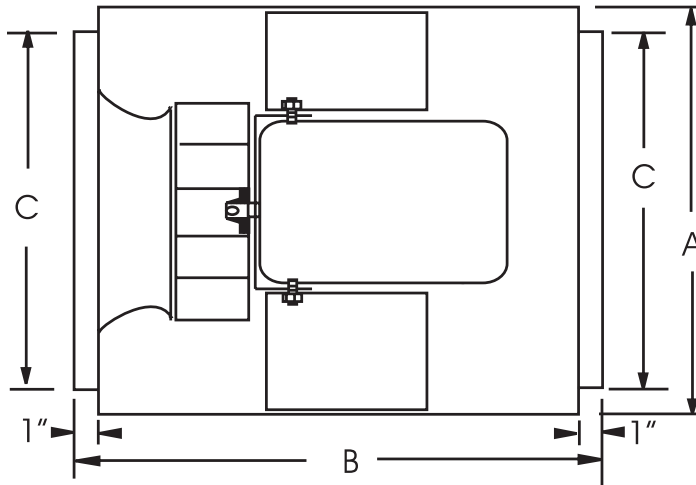
Model SQD square inline duct mounted fans are available in sizes 6 through 15, moving up to 2,800 CFM, with static pressure capabilities to 1". SQD units are the perfect selection for clean air applications where space is a leading consideration. The compact housing with removable access doors and side discharge capability can be mounted in any orientation. AMCA licensed performance and UL listing assure that you have made a reliable selection.



S&P USA Ventilation Systems, LLC., Div. of Soler & Palau Ventilation Group, certifies that the Models SQD shown herein are licensed to bear the AMCA Seal. The ratings shown are based on test and procedures performed in accordance with AMCA Publication 211 and AMCA Publication 311 and comply with the requirement of the AMCA Certified Ratings Program.



LISTED POWER
ROOF VENTILATOR
UL STANDARD 705



DIMENSIONAL DATA

SIZE	A	B	C	AVG SHIP WT
6	13	14	8-7/8	30
8	16	17	11-7/8	60
10	19	20	13-7/8	75
12	23	24	15-7/8	90
15	27	29	19-7/8	120

ACCESSORIES

MODEL SQD	DAMPER		DAMPER MOTOR (LOOSE)	VIBRATION ISOLATORS HANGING STYLE		VIBRATION ISOLATORS FLOOR MOUNT		SPEED CONTROL	
	OD	STOCK NO.	STOCK NO.	RUBBER STOCK NO.	SPRING STOCK NO.	RUBBER STOCK NO.	SPRING STOCK NO.	115/1/60	
								5 AMP STOCK NO.	10 AMP STOCK NO.
6	9	411009 ●	411611 ●	VHRSQ06-15 ●	VHSSQ06-20 ●	VFRSQ06-15 ●	VFSSQ06-20 ●	2727.1 ●	N/A
8	12	411012 ●	411611 ●	VHRSQ06-15 ●	VHSSQ06-20 ●	VFRSQ06-15 ●	VFSSQ06-20 ●	2727.1 ●	N/A
10	14	411014 ●	411611 ●	VHRSQ06-15 ●	VHSSQ06-20 ●	VFRSQ06-15 ●	VFSSQ06-20 ●	2727.1 ●	2828.1 ●
12	16	411016 ●	411611 ●	VHRSQ06-15 ●	VHSSQ06-20 ●	VFRSQ06-15 ●	VFSSQ06-20 ●	2727.1 ●	2828.1 ●
15	20	411020 ●	411611 ●	VHRSQ06-15 ●	VHSSQ06-20 ●	VFRSQ06-15 ●	VFSSQ06-20 ●	N/A	2828.1 ●

MODEL SQD			Square Inline Direct Drive Centrifugal Duct Fan									Ventilator with Totally Enclosed Motor
MODEL SQD	MOTOR HP	MAX BHP	RPM	SONES @ 1/4 SP	CFM at Static Pressure							115/1/60*
					1/8	1/4	3/8	1/2	5/8	3/4	1	STOCK NO.
60	115 WATTS	".95 MAX AMPS @ 115/60/1"	1250	2.2	201	120	-	-	-	-	-	SQD601AS ●
			1500	3.5	180	112	62	-	-	-	-	
			1850	5.4	248	199	141	98	-	-	-	
			2100	6.8	293	250	209	154	117	84	-	
			2400	8.6	345	309	270	235	184	150	91	
			2700	10.4	395	366	333	297	267	219	158	
825	1/4	0.18	1050	3.8	400	279	-	-	-	-	-	SQD8251AS ●
			1200	5.4	483	388	263	-	-	-	-	
			1400	7.2	589	515	427	318	-	-	-	
			1550	8.5	665	602	528	445	340	-	-	
			1740	10.5	761	707	646	578	509	415	-	
1025	1/4	0.18	900	4.5	690	509	-	-	-	-	-	SQD10251AS ●
			1000	6.0	803	646	426	-	-	-	-	
			1050	6.8	857	709	542	-	-	-	-	
			1150	8.3	963	830	690	475	-	-	-	
1050	1/2	0.53	1050	6.0	857	709	542	-	-	-	-	SQD10501AS ●
			1200	8.1	1014	890	758	603	-	-	-	
			1350	10.1	1166	1064	947	827	690	-	-	
			1450	11.2	1265	1174	1067	959	843	696	-	
			1650	13.9	1462	1386	1299	1203	1108	1008	744	
			1710	14.7	1521	1448	1366	1274	1182	1089	877	
1225	1/4	0.53	900	6.0	1045	793	518	-	-	-	-	SQD12251AS ●
			1000	7.6	1211	986	756	-	-	-	-	
			1050	8.4	1292	1081	864	626	-	-	-	
			1100	9.3	1373	1175	967	748	-	-	-	
			1120	9.7	1404	1213	1007	795	-	-	-	
1250	1/2	0.53	950	6.4	1119	880	643	-	-	-	-	SQD12501AS ●
			1050	7.8	1278	1074	852	-	-	-	-	
			1300	11.9	1656	1512	1342	1158	986	-	-	
			1500	15.6	1952	1831	1698	1548	1387	1235	-	
			1620	17.7	2128	2014	1897	1766	1622	1474	1198	
1550	1/2	0.52	700	6.1	1524	1204	872	-	-	-	-	SQD15501AS ●
			800	8.0	1837	1534	1277	966	-	-	-	
			900	10.2	2192	1877	1616	1389	1106	-	-	
			1000	12.7	2498	2185	1948	1736	1530	1279	-	
			1060	14.6	2676	2367	2156	1934	1744	1540	-	

* True motor speed - other speeds based on speed control use.

Performance certified is for installation Type B-free inlet, ducted outlet.

Power ratings (BHP) do not include transmission losses.

Performance ratings do not include the effects of appurtenances (accessories).

The sound ratings shown are loudness values in fan sones at 5 feet (1.5m) in a hemispherical free field calculated per AMCA Standard 301. Installation Type A: free inlet hemispherical sone levels.

Use 5 AMP Speed Control for motors 1/4 HP and smaller.

Use 10 AMP Speed Control for motors 1/2.

MODEL RCXII/RCXII-SF

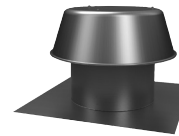
GRAVITY RELIEF/INTAKE

VENTILATOR

RCXII-SF = SELF FLASHING



RCXII
(sizes 6-20)



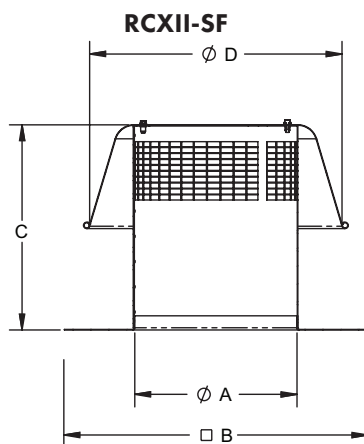
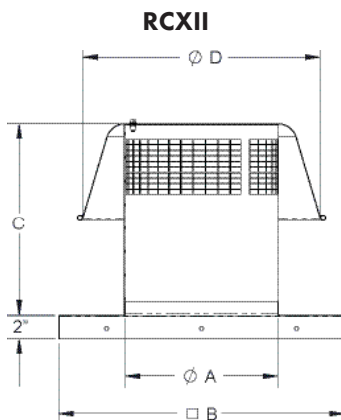
RCXII-SF
(sizes 6-20)

APPLICATION

Relief and intake ventilators are used to exhaust (relief) or supply (intake) air from or to an enclosed area without the need for a power operated fan. They rely on a difference in static pressure inside and outside the area to create an air flow through the ventilator from the area of higher pressure to the area of lower pressure. If the enclosed area is under a negative pressure, air will flow into the enclosed area (intake). If the enclosed area has a positive pressure, air will flow from it to the outside (relief).

These units can also operate as gravity ventilators, allowing air to flow from an enclosed area using the "Stack Effect". The amount of air flow will depend on the temperature difference inside and outside the area and the height difference between the ventilator and the outside air intake to the area.

DIMENSIONAL DATA



ACCESSORIES

MODEL RCXII	12" HIGH ROOF CURB		115V MOTORIZED DAMPER		AUTOMATIC GRAVITY DAMPER	
	OD	STOCK NO.	OD	STOCK NO.	OD	STOCK NO.
6-8	14 3/4	611214 ●	8	2401.M0808 ●	8	2401.0808 ●
10-16	22 1/4	611222 ●	15	2401.M1515 ●	15	2401.1515 ●
18-20	27 1/4	611227 ●	21	2401.M2121 ●	21	2401.2121 ●

Dampers and motor kits ship separate - for field assembly.

SIZE	A	B (RCXII)	B (RCXII-SF)	C	D	E	AVG SHIP WT
6	7	16-1/2	17-7/8	10	14	6	7
8	9	16-1/2	17-7/8	12	14	6	12
10	11	23-7/8	23-7/8	14	20	7	12
12	13	23-7/8	23-7/8	16	20	7	12
14	15	24	27-7/8	18	27	9	15
16	17	24	27-7/8	20	27	9	20
18	19	29-1/2	27-7/8	22	27	10-1/2	30
20	21	29-1/2	31-7/8	22	30	10-1/2	30

Models RCXII (sizes 6-20) and Models RCXII-SF

MODEL RCXII Gravity Relief Ventilator												
MODEL	THROAT AREA FT. ²	CFM Static Pressure									STOCK NO. RCXII	STOCK NO. RCXII-SF
		.025	.050	.100	.125	.150	.200	.250	.300	.350		
6	0.3	93	131	185	207	227	262	293	320	346	RCXII06S ●	RCXII06SFS ●
8	0.4	221	313	442	494	541	625	699	766	827	RCXII08S ●	RCXII08SFS ●
10	0.7	297	420	594	664	727	840	939	1029	1111	RCXII10S ●	RCXII10SFS ●
12	0.9	493	697	986	1102	1208	1394	1559	1708	1845	RCXII12S ●	RCXII12SFS ●
14	1.2	604	853	1207	1349	1478	1707	1908	2091	2258	RCXII14S ●	RCXII14SFS ●
16	1.6	746	1055	1492	1668	1827	2110	2359	2584	2791	RCXII16S ●	RCXII16SFS ●
18	2.0	919	1300	1838	2055	2251	2599	2906	3184	3439	RCXII18S ●	RCXII18SFS ●
20	2.4	1127	1593	2253	2519	2759	3186	3562	3902	4215	RCXII20S ●	RCXII20SFS ●

MODEL RCXII Gravity Intake Ventilator												
MODEL	THROAT AREA FT. ²	CFM Static Pressure									STOCK NO. RCXII	STOCK NO. RCXII-SF
		.025	.050	.100	.125	.150	.200	.250	.300	.350		
6	0.3	64	91	128	143	157	181	202	222	239	RCXII06S ●	RCXII06SFS ●
8	0.4	148	209	296	331	363	419	468	513	554	RCXII08S ●	RCXII08SFS ●
10	0.7	202	286	404	452	495	571	639	700	756	RCXII10S ●	RCXII10SFS ●
12	0.9	330.5	467	661	739	810	935	1045	1145	1237	RCXII12S ●	RCXII12SFS ●
14	1.2	440.5	623	881	985	1079	1246	1393	1526	1648	RCXII14S ●	RCXII14SFS ●
16	1.6	552	781	1104	1234	1352	1561	1746	1912	2065	RCXII16S ●	RCXII16SFS ●
18	2.0	707.5	1001	1415	1582	1733	2001	2237	2451	2647	RCXII18S ●	RCXII18SFS ●
20	2.4	856	1211	1712	1914	2097	2421	2707	2965	3203	RCXII20S ●	RCXII20SFS ●

Insect Screens - Add .10 to area shown in table.

Damper - Add .10 to area shown in table.

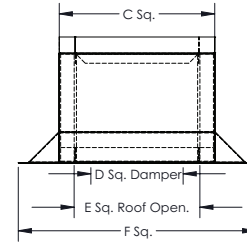
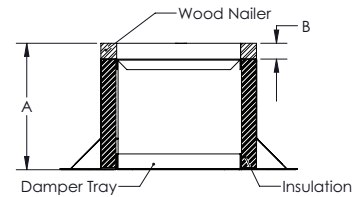
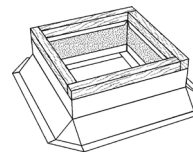
ROOF VENTILATOR ACCESSORIES

PREFABRICATED ROOF CURB

Factory built curbs reduce installation time and assure proper fit of ventilator and curb.

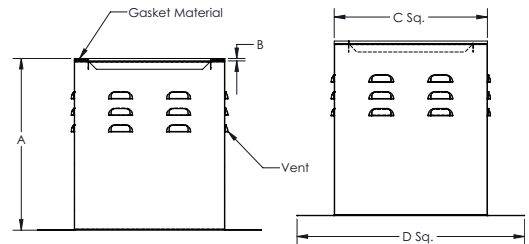
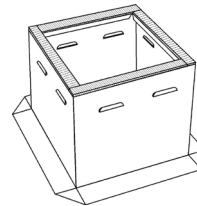
STANDARD CANTED ROOF CURB FEATURES

- Continuously welded 18 gauge galvanized steel with integral base plate.
- 1-1/2 x 1-1/2 wood nailer.
- 1" semi-rigid insulation.
- Fully mitered 3" cant.
- Damper mounting flange (damper tray).
 - Curb OD, see specific ventilators for recommended size.
 - 12" standard curb height
 - 1-1/2" standard wood nailer



RESTAURANT ROOF CURB STANDARD FEATURES

- Constructed of 18 ga. galv. steel with continuous welded seams and integral base plate for water tightness and extra strength.
- Wide base flashing to insure adequate bond to roofing surface for water tight seal to roof.
- Insulation not furnished when curb is equipped with special ventilation slots.
- Top of curb covered with 1/4" polystyrene gasket for weather seal and to reduce metal to metal conducted noise.
- Minimum curb height is 18" to comply with NFPA Bulletin 96



STANDARD CANTED ROOF CURB

VENTED RESTAURANT ROOF CURB

STANDARD DUTY - BOX FRAME BACKDRAFT DAMPER

For exhaust ventilator models **SDB, SDBD, LPD, STXD, STXB, and ARE/ARS**

For supply fan - refer to the flanged frame damper on the following page.

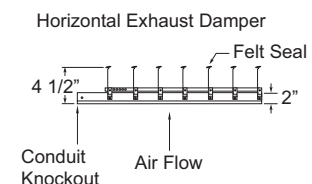
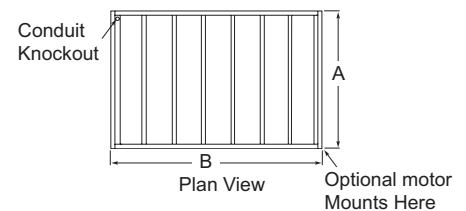
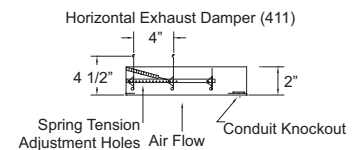
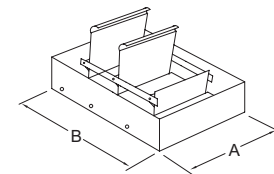
- Maximum face velocity - 1000 FPM.
- 19 gauge galvanized steel frame.
- 26 gauge aluminum blades.
- Stainless steel pivots.
- Felt seal between blades.
- Adjustable spring counter balance.
- Max 250°F ambient temp (130°F for motor).

Notes:

- (1) Units are undersized 1/4" to fit in square ducts or inside the roof curb.
- (2) Do not mount fan less than 1/3 diameter of the fan from the damper.
- (3) Dampers shipped in individual cartons.
- (4) Motor kits ship loose for field installation.

A = Damper OD, see specific ventilator for specific size.

DO NOT USE A DAMPER IN GREASE REMOVAL APPLICATIONS OR WITH A UL-762 LISTED EXHAUST FAN FOR KITCHEN VENTILATION



ROOF VENTILATOR ACCESSORIES, cont'd.

HEAVY-DUTY FLANGED FRAME BACKDRAFT DAMPER

For exhaust ventilator models ARE, RCXII.

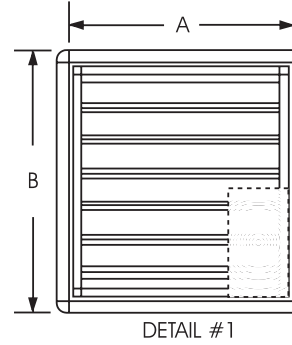
For supply ventilator models KSFV, ARS and RCXII.

- Maximum face velocity - 3000 FPM.
- 20 gauge galvanized steel frame.
- .025 aluminum blades.
- 28 gauge galvanized steel blades for 7 1/2 HP ventilator models (XHD).
- Stainless steel axles.
- Galvanized steel tie bars, stainless steel pins.
- Extruded vinyl seals between blades, mechanically locked into blade.
- Spring assist kit supplied with XHD dampers.

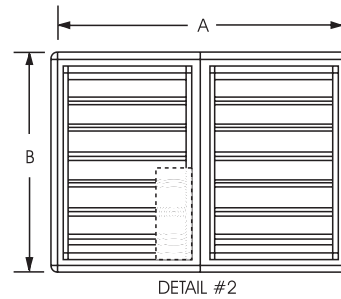
- (1) Do not mount fan less than 1/3 diameter of fan from the shutter.
- (2) Motors are 115/208/230V.
- (3) Dampers shipped in individual cartons.
- (4) Motors and counterbalance kits ship separately.
- (5) Units for horizontal mounting with air flow down require counter balance kits (for gravity operation).
- (6) Multiple section assemblies may require bracing to support the weight of the assembly and to hold against system pressure. BRACING SUPPLIED BY OTHERS.
- (7) Multiple section dampers are factory joined (except 72" and larger).

A = Damper OD, see specific ventilator for recommended size.
 B = A + 2-1/2" (OD of damper flange)

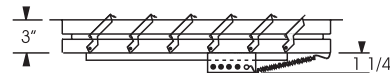
NOTE: For supply applications with airflow vertically down, a counter balance weight kit is supplied for field installation.



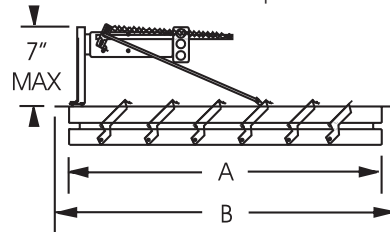
Single panel damper for ventilator size 36 & smaller.



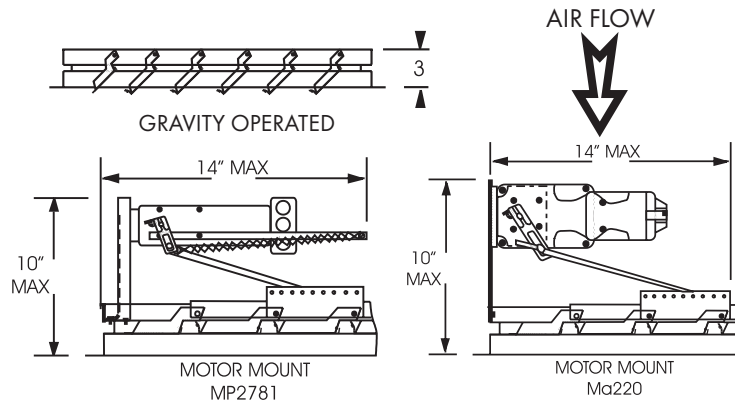
Two panel damper for ventilator size 42 & larger.



Spring Assist kit supplied with HEAVY DUTY dampers



Exhaust



Supply

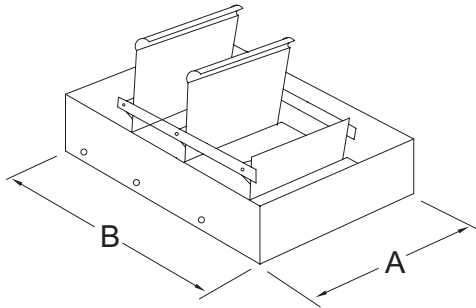
MODEL 411

Auto Exhaust Damper

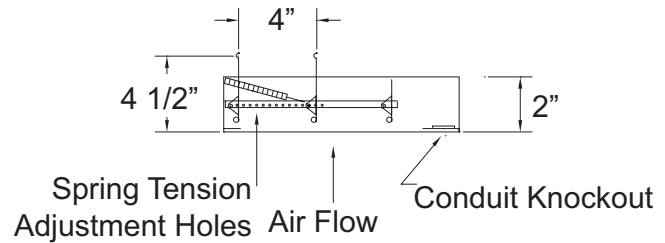


APPLICATION

The Model 411 is a non-flanged horizontal mount exhaust backdraft damper. The frame is galvanized steel with aluminum blades. The blades have a felt seal on the leading edge for quiet closing and better protection from the weather. Spring assisted to allow blades to open quickly. Ideal for use in roof curbs, duct work, or wall collars when using a fan or power roof ventilator. Only available for horizontal mount exhaust applications.



Horizontal Exhaust Damper (411)



STANDARD SIZES

Dimensions in Inches

Part No.	Overall Frame Dimensions (W x H)	Free Area Dimensions (W x H)	Face Area (Sq. Ft.)	Est. Free Area (Sq. Ft.)	Est. Shipping Weight (lbs)
411008 ●	7.75 x 7.75	6.125 x 7.25	.42	.31	2
411009 ●	8.75 x 8.75	6.50 x 7.25	.53	.33	2.5
411010 ●	9.75 x 9.75	7.125 x 8.25	.66	.41	2.5
411011 ●	10.75 x 10.75	8.50 x 9.25	.80	.55	3
411012 ●	11.75 x 11.75	9.125 x 10.25	.96	.65	3.50
411014 ●	13.75 x 13.75	11.125 x 12.25	1.51	.95	4
411016 ●	15.75 x 15.75	13.125 x 14.25	2.19	1.30	4
411018 ●	17.75 x 17.75	15.125 x 16.25	2.44	1.71	4.5
411020 ●	19.75 x 19.75	17.125 x 18.25	3.29	2.17	5
411022 ●	21.75 x 21.75	19.125 x 20.25	3.59	2.69	5
411024 ●	23.75 x 23.75	21.125 x 22.25	3.92	3.26	6
411026 ●	25.75 x 25.75	23.125 x 24.25	4.60	3.89	7
411028 ●	27.75 x 27.75	25.125 x 26.25	5.35	4.58	7.5
411030 ●	29.75 x 29.75	27.125 x 28.25	6.15	5.32	8

Note: Dimensions are approximate due to normal tolerances in the manufacturing process. Estimated Free Area calculation is based upon the following formula: $MD[A+B+(N \times C)]/144$. Free Area x FPM = CFM; actual performance may vary.

Competitors Cross Reference Models

Models are for general similarity only. Refer to specifications and construction data for details

S&P	DESCRIPTION	ACME	CARNES	COOK	GREENHECK	PENN	TWIN CITY	COOLAIR	FANTECH	CAPTIVE AIRE
SDB	Power Roof Exhauster - Centrifugal - Belt Drive	PV/PNN	VEBK	ACEB	GB	DXB/KB/JB/MB	BCRD	CRBCA	5BDD	DD-FA
LPD	Power Roof Exhauster - Centrifugal - Direct Drive	PRN	VEDK	ACED	G	DX	CRDD	CRDA	5DDD	DR-HFA
SDBD	Power Roof Exhauster - Centrifugal - Direct Drive	PRN	VEDK	ACED	G	DX	CRDD	CRDA	5DDD	DR-HFA
STXB	Upblast Roof Exhauster - Centrif. - Belt Drive	PNU/PU/PUH	VUBK	ACRUB	CUBE	FXB/FMX	BCRU	UBCA	5BDU	NCA-FA
STXB (UL-762)	Upblast Restaurant Hood Exhauster - Belt Drive	PNU-RG	VRBK	VCR	CUBE	FXBFT/FMBFT	BCRUR	CUBA	5BDU-762	NCA-HPFA
STXD	Upblast Roof Exhauster - Centrif. - Direct Drive	PDU	VUDK	ACRUD	CUE	FX/FMX	DCRU	UDCA	5DDU	DU-HFA
KSPV	Filtered Fresh Air Supply Roof Fan	AFSI	VSB	KSPB	KSU/RSF	MU	BCFS	CSF/SIS	5FSU	A-SERIES
SQB	Inline Duct Fan - Centrifugal - Belt Drive	XB	VIBK	SQN-B/SQI-B	BSQ	SXB	BST	SQBA	-	ISQB
SQD	Inline Duct Fan - Centrifugal - Direct Drive	XD	VIDK	SQN-D/SQI-D	SQ	SX	DSI	SQDA	-	-
RCXII	Non-powered Roof Vent - Round Dome	LQV	GSA	PR	GRS	DR	GRV	ARVE	-	-

For more information on our
Residential and Commercial Products



**ADVANCING
VENTILATION®**

S&P USA Ventilation Systems, LLC
6393 Powers Avenue
Jacksonville, FL 32217
T. 904-731-4711 • F. 904-737-8322
www.solerpalau-usa.com

S&P Canada Ventilation Products, Inc
6710 Maritz Drive Unit #7
Mississauga, ON L5W 0A1 - Canada
T. 416-744-1217 • F. 416-744-0887
www.solerpalaucanada.com

Soler&Palau
Ventilation Group